



MICHAEL YEO

ESTATE AGENTS



7 Hartforde Road

Borehamwood, WD6 5HU

£560,000

An opportunity to acquire a spacious terraced family home situated on a popular residential road, conveniently located for local schools and shops and within walking distance to the town centre with its mainline station. Arranged over three floors, this property comprises four bedrooms, three bathrooms including an en-suite, two reception rooms, a modern fitted kitchen and an office/study space. Also benefiting from a useful outbuilding with utility room and WC, an updated gas central heating system and well tended front and rear gardens. Available with no upper chain we strongly recommend an early viewing to secure.

EPC rating: D

Viewing

Please contact our Michael Yeo Estate Agents Office on if you wish to arrange a viewing appointment for this property or require further information.

- Terraced family home
- Four bedrooms
- Three bathrooms
- Two reception rooms
- Fitted kitchen
- Office/study space
- Gas central heating
- Outbuilding with WC
- Convenient location
- No chain



4



3

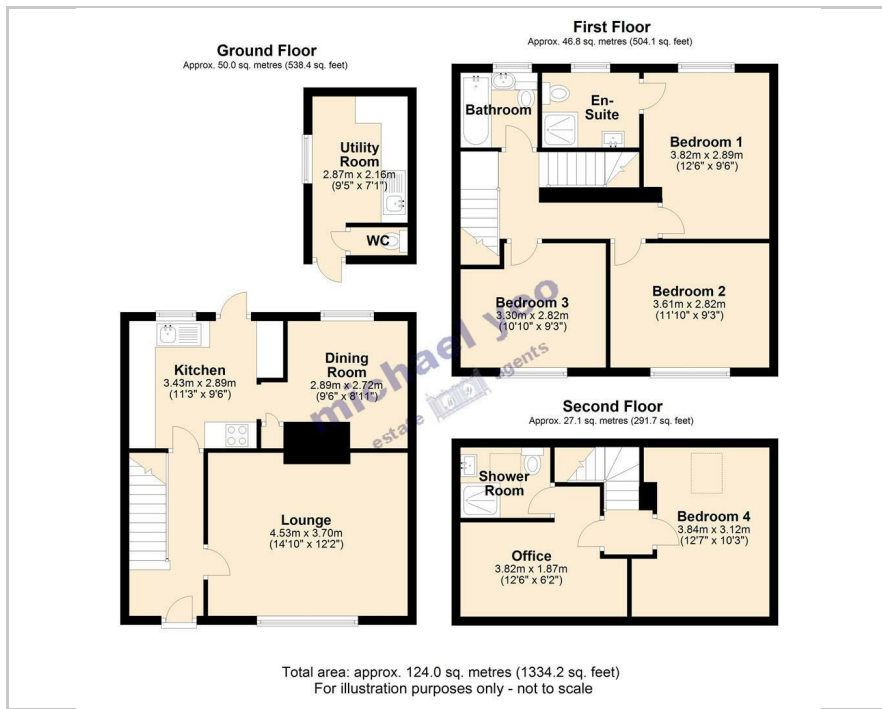


2

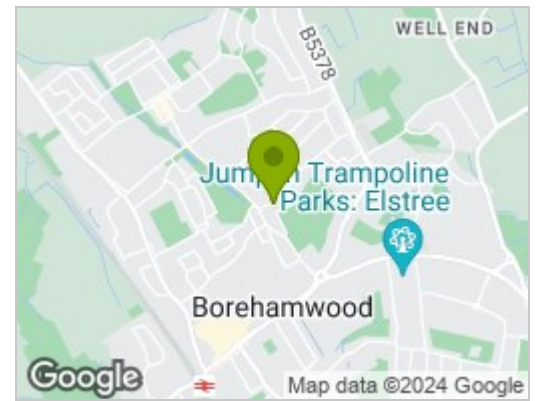


D

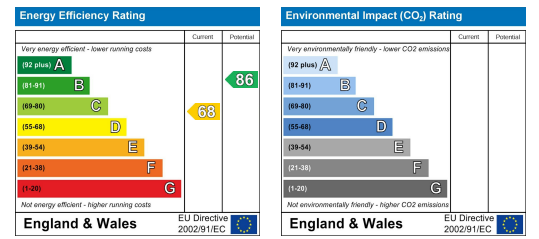
Floor Plan



Area Map



Energy Efficiency Graph



These particulars, whilst believed to be accurate are set out as a general outline only for guidance and do not constitute any part of an offer or contract. Intending purchasers should not rely on them as statements of representation of fact, but must satisfy themselves by inspection or otherwise as to their accuracy. No person in this firm's employment has the authority to make or give any representation or warranty in respect of the property.