



MICHAEL YEO  
ESTATE AGENTS



## 14 Tennison Avenue

Borehamwood, WD6 2BE

£950,000

Michael Yeo Estate Agents are pleased to offer this greatly extended semi detached family home situated on one of Borehamwoods premier roads, conveniently located for the town centre and mainline station. Vastly improved by the current owners, this property comprises five bedrooms including a bedroom with its own kitchenette and en-suite shower room, two additional bathrooms, a TV lounge and a spacious family lounge/dining room open plan to a fully fitted kitchen with integrated appliances, all of which are complemented by gas central heating and double glazing throughout. Also featuring an impressive garden studio with a shower room and its own heating system, a smart rear garden and off street parking. We strongly recommend an early viewing of this fine home to avoid disappointment.

EPC rating: TBC

### Viewing

Please contact our Michael Yeo Estate Agents Office on if you wish to arrange a viewing appointment for this property or require further information.

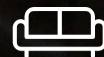
- Extended family home
- Five bedrooms
- Three bathrooms
- Fully fitted kitchen
- Lounge/dining room
- TV room
- Garden studio
- Off street parking
- Premier location
- Viewing highly recommended.



5



3

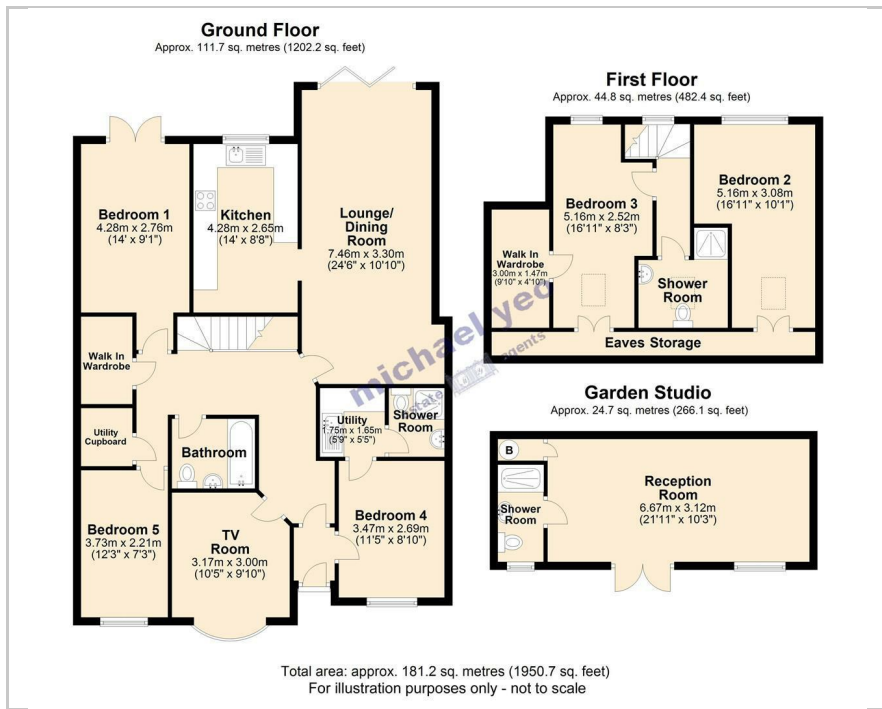


2





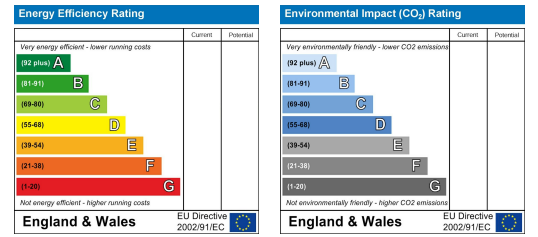
## Floor Plan



## Area Map



## Energy Efficiency Graph



These particulars, whilst believed to be accurate are set out as a general outline only for guidance and do not constitute any part of an offer or contract. Intending purchasers should not rely on them as statements of representation of fact, but must satisfy themselves by inspection or otherwise as to their accuracy. No person in this firm's employment has the authority to make or give any representation or warranty in respect of the property.