



MICHAEL YEO  
ESTATE AGENTS



## 19 Milland Court Borehamwood, WD6 5RX

**£435,000**

An opportunity to acquire one of these popular terraced homes quietly situated in a sought after cul-de-sac within the popular Studio Way development. Presented in excellent decorative order, this property comprises two double bedrooms, living room, conservatory, a good size fitted kitchen and a shower room, complemented by gas central heating and double glazing. With the added benefits of a smart rear garden, off street parking for two cars and available with no upper chain, an early viewing is highly recommended to secure.

EPC rating: C

### Viewing

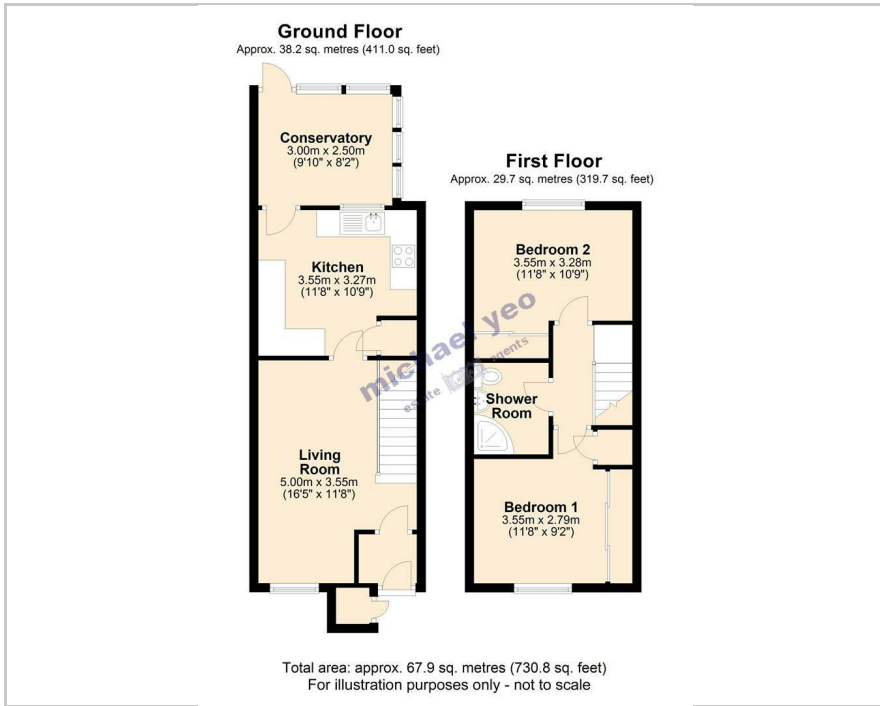
Please contact our Michael Yeo Estate Agents Office on if you wish to arrange a viewing appointment for this property or require further information.

- Modern terraced house
- Two double bedrooms
- Living room
- Fitted kitchen
- Conservatory
- Shower room
- Smart rear garden
- Off street parking x 2
- Sought after location
- No chain

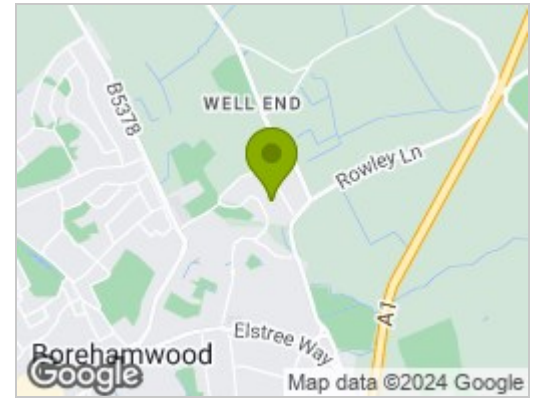




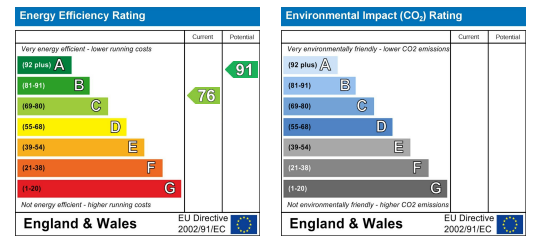
## Floor Plan



## Area Map



## Energy Efficiency Graph



These particulars, whilst believed to be accurate are set out as a general outline only for guidance and do not constitute any part of an offer or contract. Intending purchasers should not rely on them as statements of representation of fact, but must satisfy themselves by inspection or otherwise as to their accuracy. No person in this firm's employment has the authority to make or give any representation or warranty in respect of the property.