



MICHAEL YEO
ESTATE AGENTS



38 Ashley Drive Borehamwood, WD6 2JD

£469,950

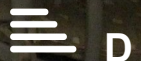
An opportunity to acquire this three bedroom terraced house situated in a popular residential area on the south side of Borehamwood, conveniently placed for access to the A1 while the mainline station and town centre are within easy reach. The property has been extended to the ground floor to provide a living room, dining room and a good size fitted kitchen. Upstairs there are three bedrooms, wet room and WC, all of which are complemented by gas central heating and double glazing throughout. With the added benefits of a delightful rear garden and available with no upper chain, we strongly recommend an early viewing to secure.

EPC Rating: D

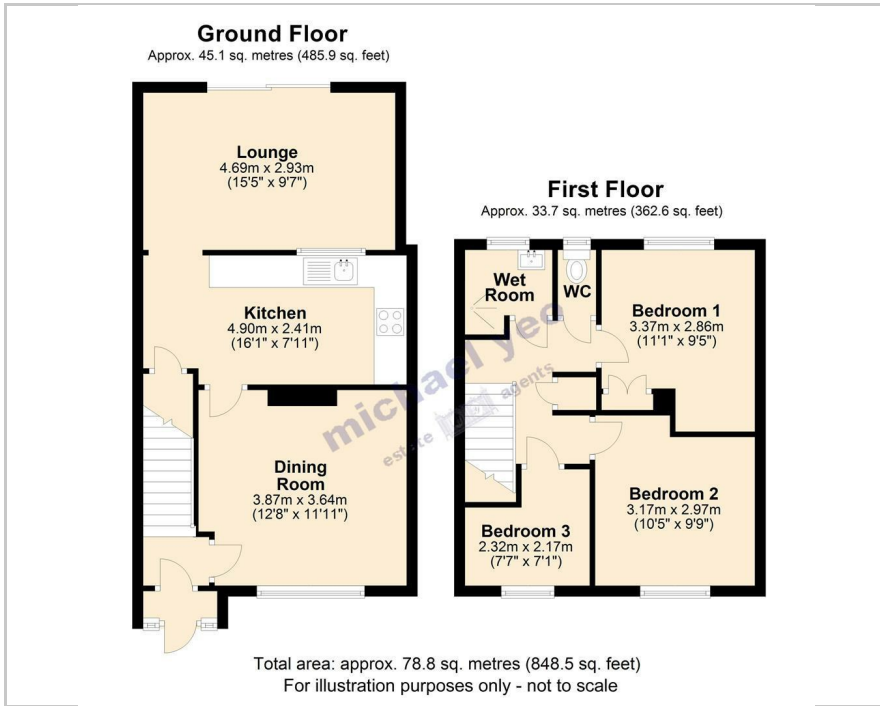
Viewing

Please contact our Michael Yeo Estate Agents Office on if you wish to arrange a viewing appointment for this property or require further information.

- Extended terraced house
- Three bedrooms
- Two reception rooms
- Fitted kitchen
- Wet room & WC
- Gas central heating
- Double glazing
- Delightful rear garden
- Popular location
- No chain



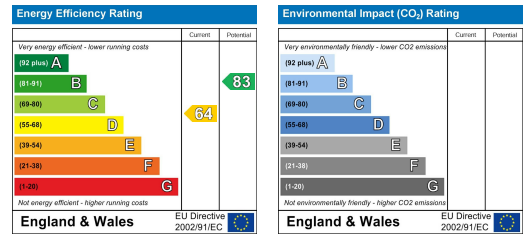
Floor Plan



Area Map



Energy Efficiency Graph



These particulars, whilst believed to be accurate are set out as a general outline only for guidance and do not constitute any part of an offer or contract. Intending purchasers should not rely on them as statements of representation of fact, but must satisfy themselves by inspection or otherwise as to their accuracy. No person in this firm's employment has the authority to make or give any representation or warranty in respect of the property.