



MICHAEL YEO

ESTATE AGENTS



14 Coates Road

Elstree, WD6 3DS

£450,000

An opportunity to acquire an extended semi detached family home situated in a popular residential area, conveniently located within a short walk of Elstree Village shops and amenities, while Borehamwood with its mainline station and shopping amenities are only a short drive away. In need of modernisation, this property comprises three bedrooms, lounge/dining room, family room, kitchen, bathroom and separate WC. Also benefiting from gas central heating, a private rear garden with brick outbuilding and a front drive providing off street parking. Available with no upper chain, we strongly recommend an early viewing to secure.

EPC rating: D

Viewing

Please contact our Michael Yeo Estate Agents Office on if you wish to arrange a viewing appointment for this property or require further information.

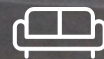
- Extended semi detached house
- Three bedrooms
- Two reception rooms
- Kitchen
- Bathroom & WC
- Gas central heating
- Off street parking
- Updating required
- Close to local amenities
- No chain



3



1

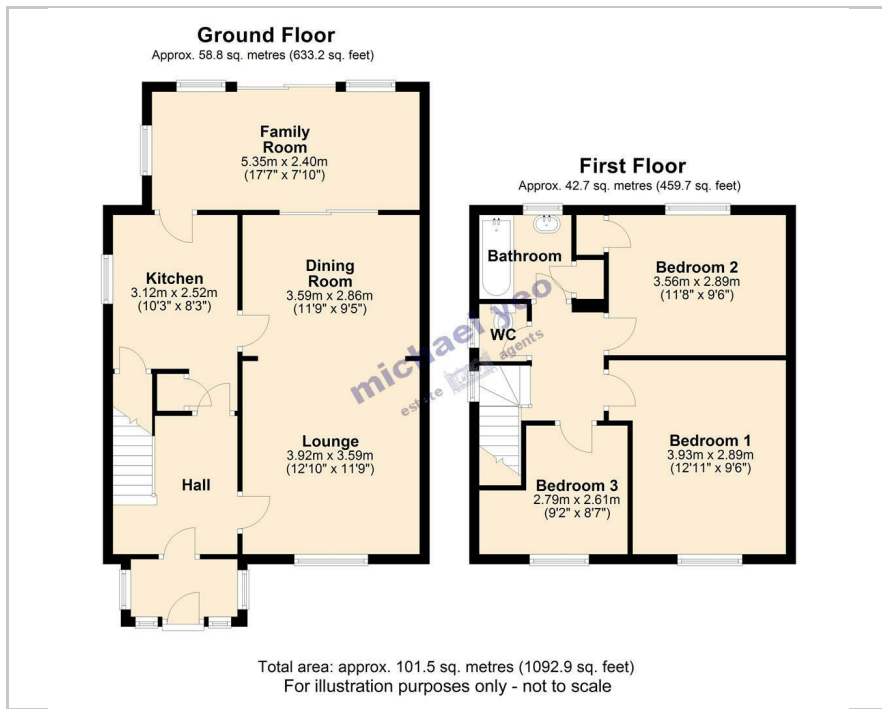


2



D

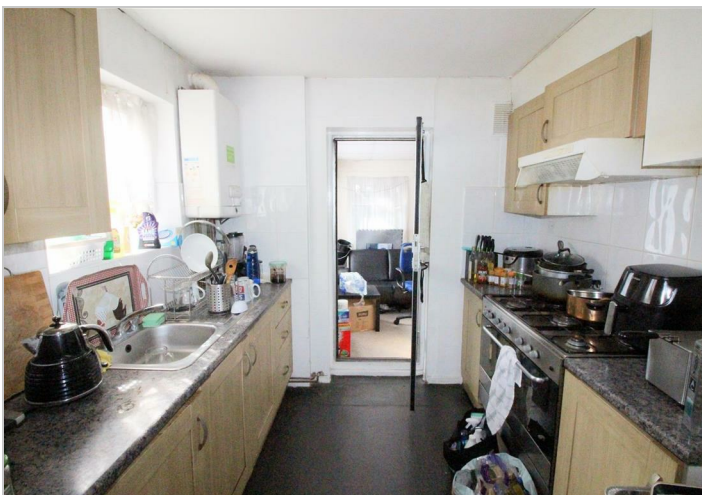
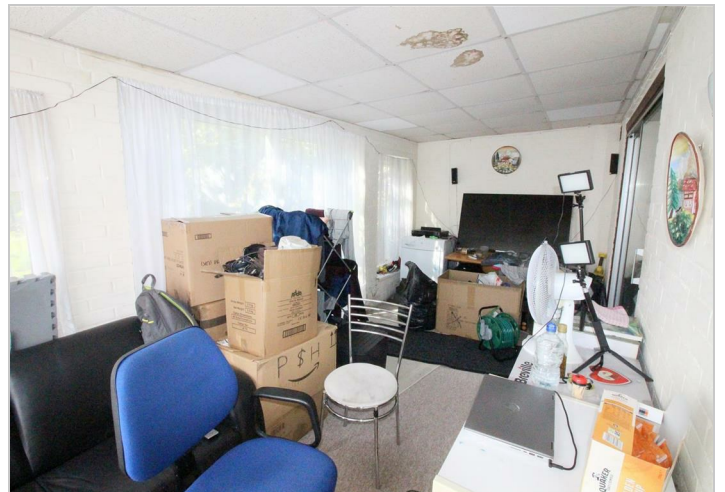
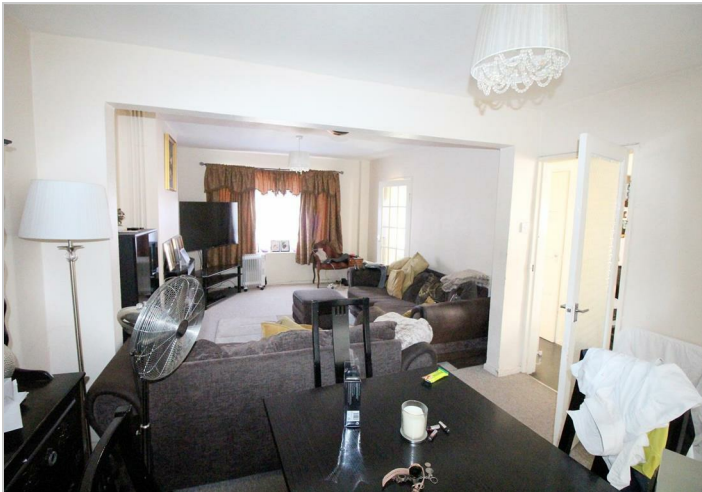
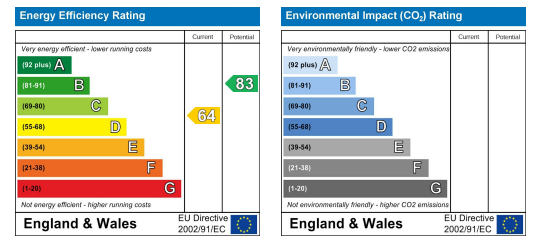
Floor Plan



Area Map



Energy Efficiency Graph



These particulars, whilst believed to be accurate are set out as a general outline only for guidance and do not constitute any part of an offer or contract. Intending purchasers should not rely on them as statements of representation of fact, but must satisfy themselves by inspection or otherwise as to their accuracy. No person in this firm's employment has the authority to make or give any representation or warranty in respect of the property.