



MICHAEL YEO

ESTATE AGENTS



31 Whitehouse Avenue

Borehamwood, WD6 1HA

£565,000

An opportunity to acquire one of these popular 1930s built terraced family homes situated on this sought after residential avenue, conveniently located within walking distance to the town centre, mainline station and local schools including Yavneh College. This extended property comprises three bedrooms, two reception rooms, a fully fitted modern kitchen/breakfast room with integrated appliances and a modern bathroom, all of which are complemented by gas central heating and double glazing throughout. Also benefiting from a private rear garden and a front drive that comfortably provides off street parking for two vehicles. Presented in excellent decorative order, we strongly recommend an early viewing to avoid disappointment.

EPC rating: D

Viewing

Please contact our Michael Yeo Estate Agents Office on if you wish to arrange a viewing appointment for this property or require further information.

- Extended terraced home
- Three bedrooms
- Two reception rooms
- Fitted kitchen/breakfast room
- Modern bathroom
- Gas central heating
- Double glazing
- Private rear garden
- Off street parking
- Close to town centre



3



1

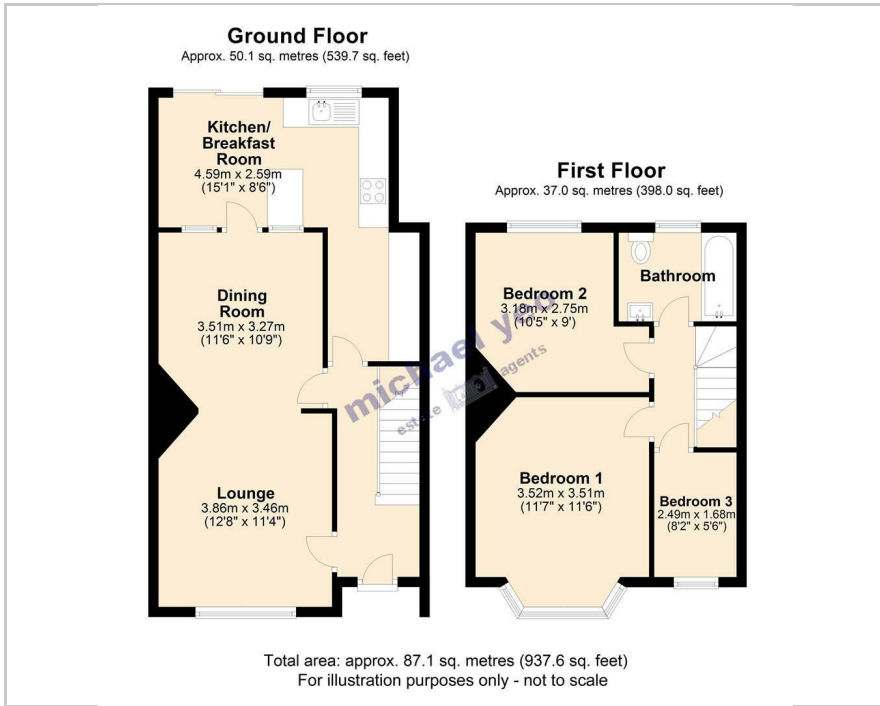


2

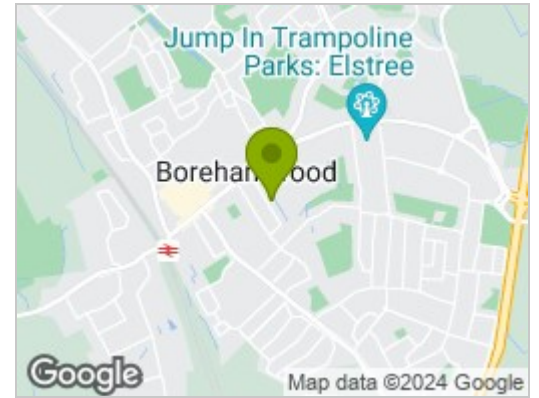


D

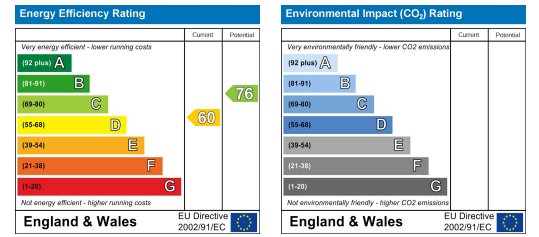
Floor Plan



Area Map



Energy Efficiency Graph



These particulars, whilst believed to be accurate are set out as a general outline only for guidance and do not constitute any part of an offer or contract. Intending purchasers should not rely on them as statements of representation of fact, but must satisfy themselves by inspection or otherwise as to their accuracy. No person in this firm's employment has the authority to make or give any representation or warranty in respect of the property.