



1 Antonie Close, Sharnbrook, Bedford, MK44 1FJ



1 Antonie Close
Sharnbrook
Bedford
MK44 1FJ

Price £445,000

Detached home in a most
popular village location...

Entrance hall

Living room

Kitchen/dining room

Rear hall/utility

Cloakroom

Three bedrooms

En suite to master bedroom

Family bathroom

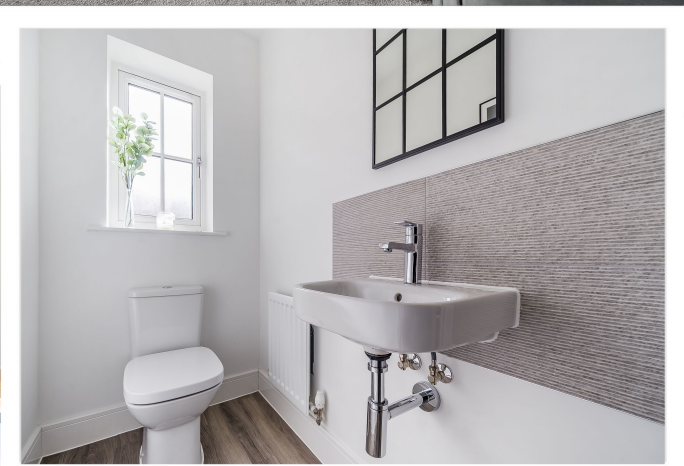
Garage

Gardens

Gas fired central heating

Freehold

- Council Tax Band D
- Energy Efficiency Rating B



In a lovely setting on the edge of a recently completed new development...



A wonderful opportunity to acquire a modern three-bedroom detached home constructed in 2022 and sitting in a lovely setting on the edge of a recently completed new development.

The living room is at the front of the property overlooking woodland on the other side of the road. The kitchen/dining room is at the rear of the property with access to the rear garden via French doors and there is a rear hall with a utility recess and a cloakroom off.

On the first floor there are three double bedrooms, the master having an en suite shower, and a family bathroom.

The property is offered in excellent order throughout and additional benefits include gas fired central heating and PVCu double glazed windows.

On the exterior there is an open plan front garden and good off-road parking leading to a detached garage. Side access leads through to the enclosed rear garden that is laid to lawn with a paved patio and a garden shed.

Sharnbrook is located just nine miles to the north of Bedford with easy access from the A6 and easy access to Bedford's excellent network of roads allowing connections to the M1, A1, Milton Keynes, Cambridge and other important employment and recreational centres.

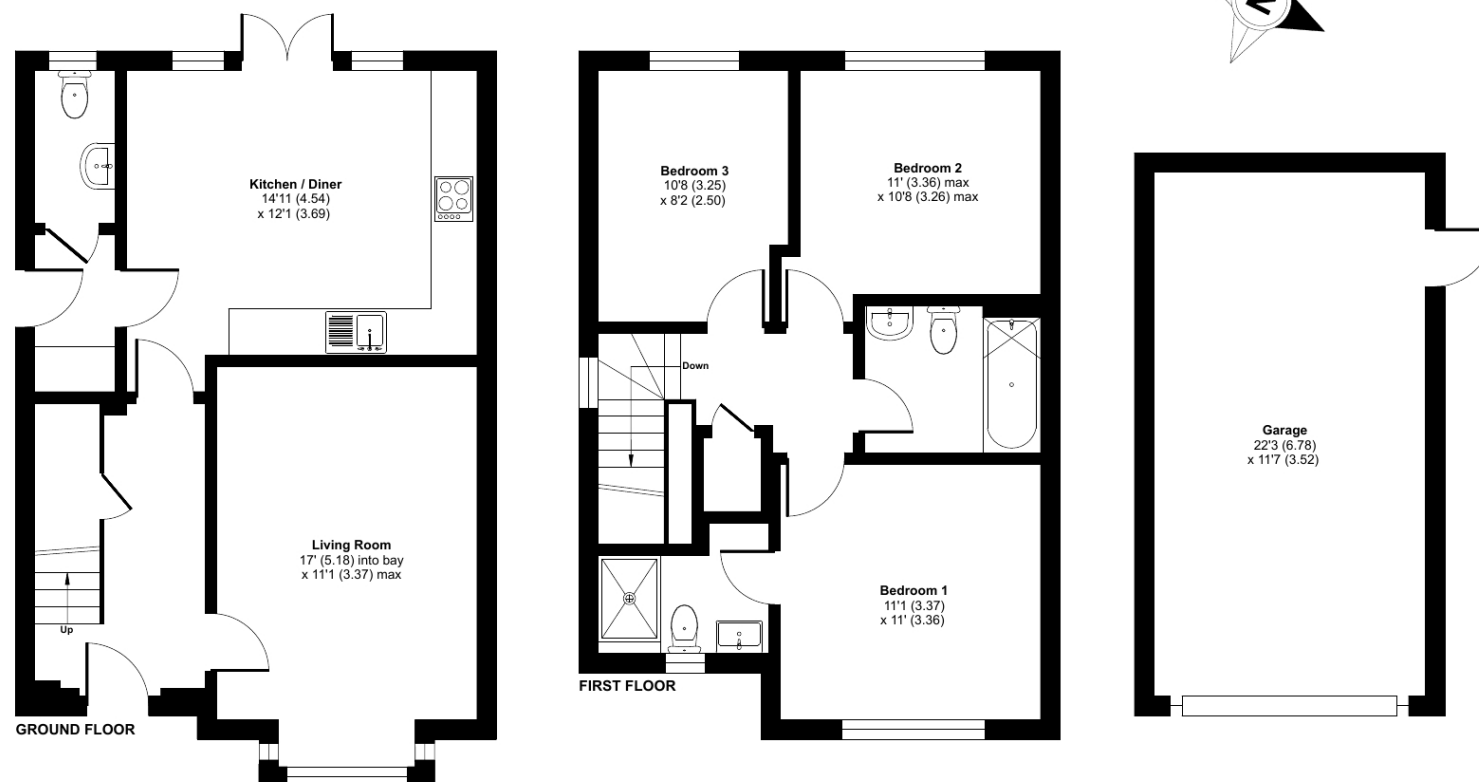
Bedford's mainline railway station offers fast and regular services to London's St Pancras. There are both Primary and Secondary schools within the village with private schools operated by the Harpur Trust and others in Bedford.

Additional facilities in Sharnbrook include a day nursery, one Public House, an Indian restaurant/bar, three churches, a GP's surgery, local shops, an established village playing fields' association offering tennis, bowls, football, cricket, a social club and a village hall.

Antonie Close, Sharnbrook, Bedford, MK44

Approximate Area = 1018 sq ft / 94.5 sq m (excludes garage)

For identification only - Not to scale



Floor plan produced in accordance with RICS Property Measurement 2nd Edition, Incorporating International Property Measurement Standards (IPMS2 Residential). © n̄checom 2025. Produced for Lane & Holmes. REF: 1256002



01234 327744 | sales@laneandholmes.co.uk | www.laneandholmes.co.uk | 66-68 St Loyes Street, Bedford, Bedfordshire, MK40 1EZ

Agents Notes: The agent has not tested any apparatus, equipment, fixtures & fittings or services and so cannot verify that they are in working order or fit for the purpose. A buyer is advised to obtain verification from their solicitor or surveyor. All photographs shown are for illustration only and may depict items that are not for sale or included in the sale of the property. Please note that we have not checked the situation with regards to planning consents, building regulation consents and any other relevant consent relating to this property and therefore, any interested applicant should carry out their own enquiries with the appropriate authorities. All measurements are approximate and for guidance only. The particulars do not form part of any contract and all properties are offered subject to contract.

