



10 Kensington Gardens, Bedford, MK40 3FH

10 Kensington Gardens
Bedford
MK40 3FH

Price £490,000

Very well maintained and
individual town house...

Townhouse

Rarely available opportunity

Cloakroom

Living/dining room

Kitchen/breakfast room

Three bedrooms

Two bath/shower rooms

Gas central heating

Two parking spaces

Own private garden

No chain

Freehold

- Council Tax Band D
- Energy Efficiency Rating B



Located in a unique gated development on the edge of the popular Castle Road area...



Set within a unique gated development comprising a mix of converted and new build homes, this three storey town house has the advantage of a very central location. It is within close proximity to the town centre and therefore has numerous facilities close by with the mainline railway station also being within easy reach.

The property is offered in excellent order and offers beautiful oak finishes, tiling and décor. The ground floor includes a very spacious living/dining room and a modern kitchen/breakfast room with both these rooms having sliding doors to the garden.

Moving to the first floor, there are two double bedrooms which both have fitted storage and Juliet balconies and use of the family bathroom.

Occupying the second floor there is a very impressive master bedroom suite with eaves storage and en suite shower room.

Other benefits include a ground floor cloakroom, high performance double glazing and gas fired central heating – serving both underfloor and radiator heating.

The property has two dedicated parking spaces and to the rear, the south facing garden offers a range of shrubs and plants. The property sits within well maintained grounds, with an annual maintenance charge of £655.

This home could easily suit a family, downsizers or even those looking for a “lock up and leave”. There is no onward chain.

Kensington Gardens sits on the edge of the popular Castle Road area, which offers a host of amenities of its own, in addition to those in the town centre. Russell Park and the Embankment for riverside walks are also readily accessible.



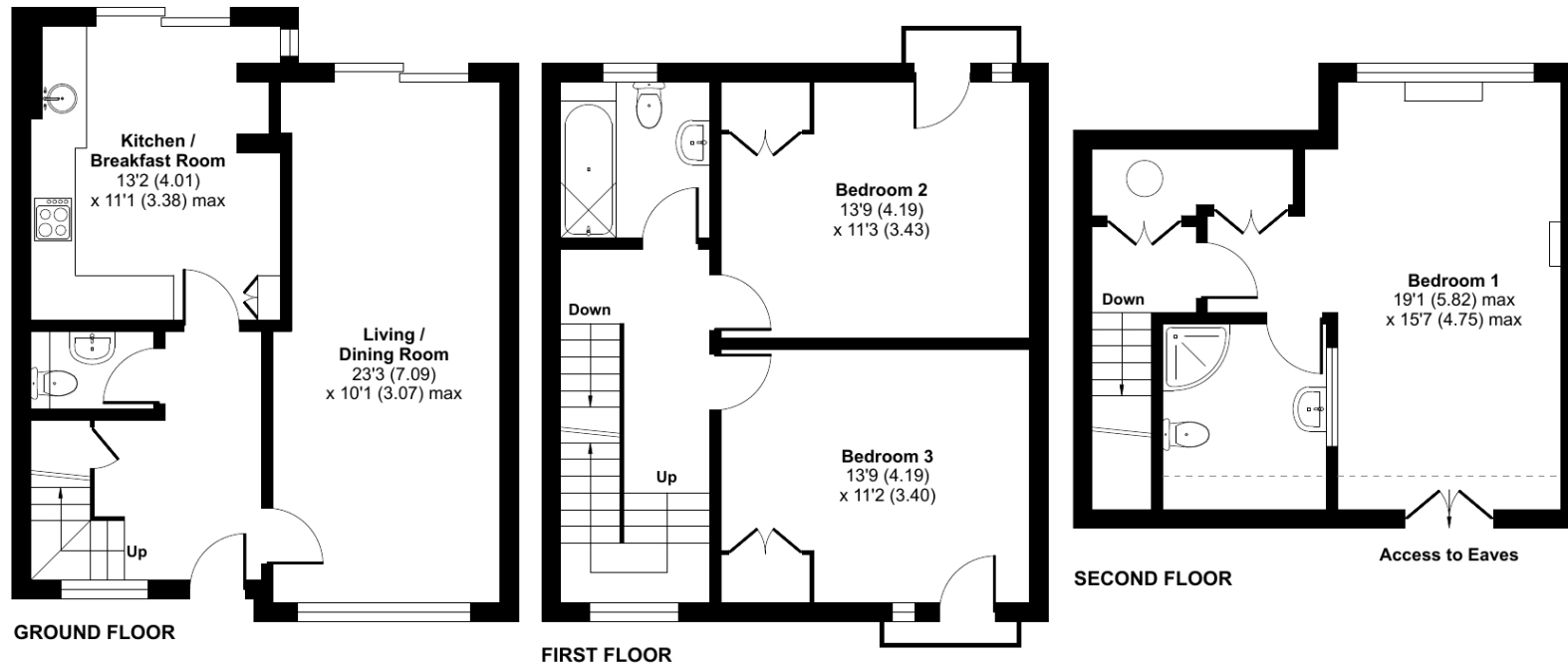
Kensington Gardens, Bedford, MK40

Approximate Area = 1340 sq ft / 124.4 sq m

Limited Use Area(s) = 27 sq ft / 2.5 sq m

Total = 1367 sq ft / 126.9 sq m

For identification only - Not to scale



This floor plan was constructed using measurements provided to © nchecon 2024 by a third party.
Produced for Lane & Holmes. REF: 1203775

01234 327744 | sales@laneandholmes.co.uk | www.laneandholmes.co.uk | 66-68 St Loyes Street, Bedford, Bedfordshire, MK40 1EZ

Agents Notes: The agent has not tested any apparatus, equipment, fixtures & fittings or services and so cannot verify that they are in working order or fit for the purpose. A buyer is advised to obtain verification from their solicitor or surveyor. All photographs shown are for illustration only and may depict items that are not for sale or included in the sale of the property. Please note that we have not checked the situation with regards to planning consents, building regulation consents and any other relevant consent relating to this property and therefore, any interested applicant should carry out their own enquiries with the appropriate authorities. All measurements are approximate and for guidance only. The particulars do not form part of any contract and all properties are offered subject to contract.