



15 Harewood Road, Bedford MK42 9TG





15 Harewood Road  
Bedford  
MK42 9TG

Price £325,000

Bay fronted family home to  
the south of Bedford...

Bay-fronted home

Cloakroom

Living/dining room

Kitchen

Three bedrooms

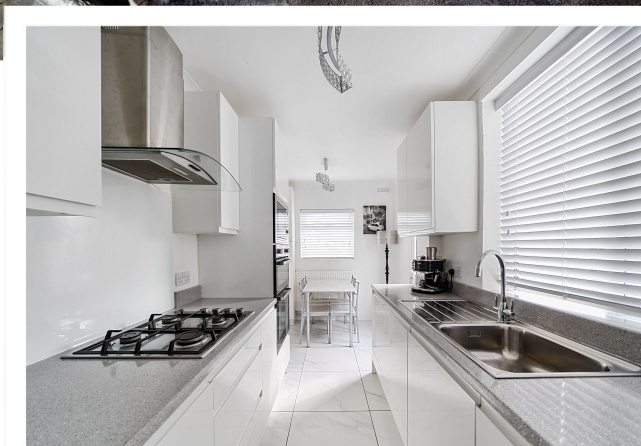
Bathroom

Gas central heating

Garage

Good size rear garden

Freehold



- Council Tax Band C
- Energy Efficiency Rating D



## Close to a wide range of amenities...



Lane and Holmes are pleased to offer for sale this traditional three-bedroom 1930s' semi-detached home located on Harewood Road.

In brief, the accommodation includes an entrance hall and a bay-fronted living/dining room that opens up to a small conservatory. There is a modern extended kitchen with contemporary units and a ground floor cloakroom.

The first floor offers three bedrooms, including two generous doubles, and there is a family bathroom with a white three-piece suite.

Further benefits include double glazing and gas fired central heating.

Externally there is off road parking in front of an attached single garage. The rear garden is laid mainly to lawn with some paving.

Harewood Road is situated between Elstow Road and Mile Road approximately 1.5 miles south of Bedford's town centre. There is an excellent range of amenities on London Road, with Bedford itself offering a wide range of shops, pubs and schools, as well as excellent commuter links via road and rail.

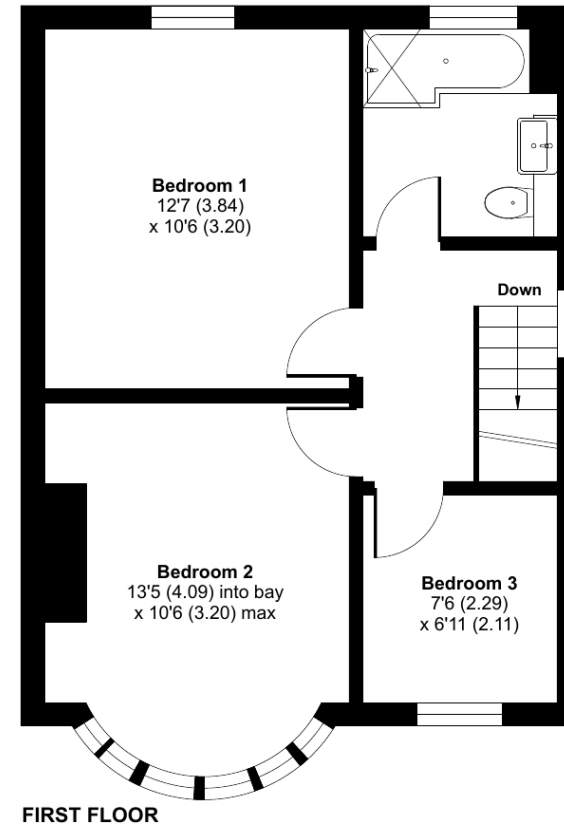
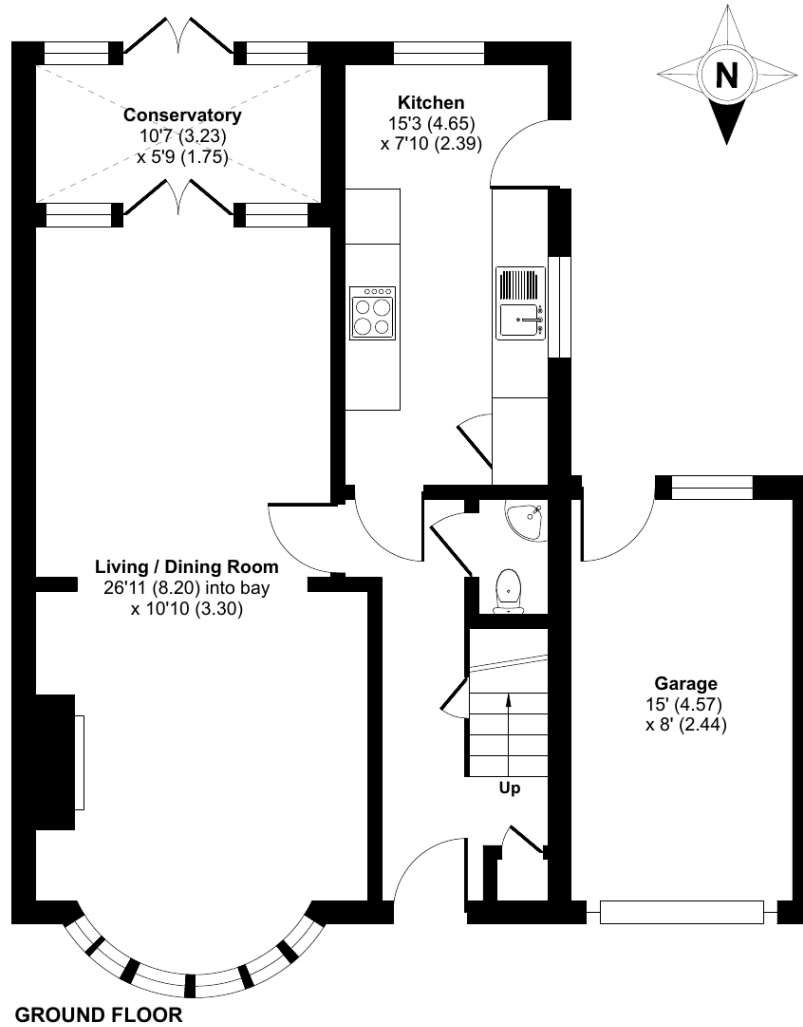
Bedford Railway Station • 2 miles  
Milton Keynes • 18 miles  
A1 Black Cat Roundabout • 9 miles  
M1 Junction 13 • 9 miles  
Luton Airport • 20 miles  
Stansted Airport • 45 miles  
London • 56 miles



# Harewood Road, Bedford, MK42

Approximate Area = 1040 sq ft / 96.6 sq m (excludes garage)

For identification only - Not to scale



Floor plan produced in accordance with RICS Property Measurement Standards incorporating International Property Measurement Standards (IPMS2 Residential). © nichecom 2024. Produced for Lane & Holmes. REF: 1118355



01234 327744 | sales@laneandholmes.co.uk | www.laneandholmes.co.uk | 66-68 St Loyes Street, Bedford, Bedfordshire, MK40 1EZ

Agents Notes: The agent has not tested any apparatus, equipment, fixtures & fittings or services and so cannot verify that they are in working order or fit for the purpose. A buyer is advised to obtain verification from their solicitor or surveyor. All photographs shown are for illustration only and may depict items that are not for sale or included in the sale of the property. Please note that we have not checked the situation with regards to planning consents, building regulation consents and any other relevant consent relating to this property and therefore, any interested applicant should carry out their own enquiries with the appropriate authorities. All measurements are approximate and for guidance only. The particulars do not form part of any contract and all properties are offered subject to contract.

