



Park View, 11 Bury Walk, Bedford MK41 0DU

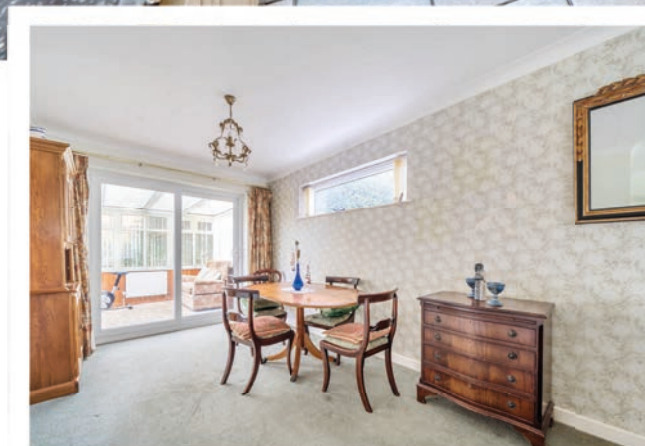


11 Bury Walk  
Bedford  
MK41 0DU

OIEO £390,000

Spacious three bedroom  
bungalow...

- Entrance hall
- Living/dining room
- Conservatory
- Refitted kitchen
- Three bedrooms
- Bathroom
- Utility room
- Large garage
- External WC
- Large garden



- Council Tax Band E
- Energy Efficiency Rating F

## Situated on a generous plot...



We are delighted to present this excellent opportunity to acquire a spacious three bedroom detached bungalow that sits on an enviable size established plot ideal for those with green fingers!

The entrance to the property is protected from the elements by an enclosed storm porch opening in to the entrance hall. There is a large living/dining room from which there is access to the conservatory that overlooks the garden.

The kitchen has been refitted and is of a good size as is the bathroom with its four-piece suite that could do with an update.

Two of the bedrooms are doubles in size with a good single bedroom that could also double as a study or hobbies' room.

Heating is from a gas fired boiler installed in 2016 and a new consumer unit for the electrics was fitted in 2017.

Additional benefits include PVCu double glazed windows and doors, a longer than average garage offering an opportunity to house two cars or have a workshop area to the rear. There is also a utility room and an external WC.

There is a tidy front garden with a path leading to the front door and a drive to the side leading to the garage. The rear garden is of a very good size offering an area to indulge in some 'grow your own' and other areas to just sit and relax.

Bury Walk is located just off Goldington Road with its junction with Riverfield Drive so is well placed for the local Tesco and Waitrose supermarkets and other retail opportunities plus a medical centre and dentist. Goldington Green is also just a few steps away.





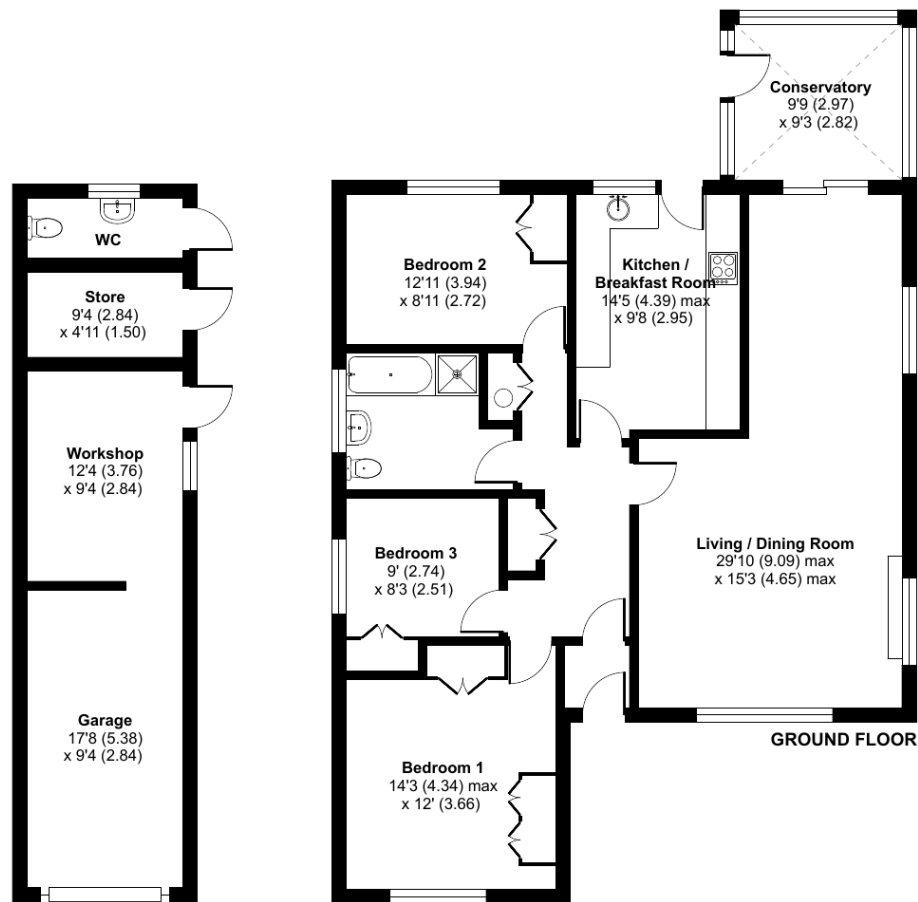
# Bury Walk, Bedford, MK41

Approximate Area = 1215 sq ft / 112.8 sq m (excludes garage / workshop)

Store & WC = 78 sq ft / 7.2 sq m

Total = 1293 sq ft / 120 sq m

For identification only - Not to scale



Floor plan produced in accordance with RICS Property Measurement Standards incorporating International Property Measurement Standards (IPMS2 Residential). © nitchecom 2024. Produced for Lane & Holmes. REF: 1075738



01234 327744 | [sales@laneandholmes.co.uk](mailto:sales@laneandholmes.co.uk) | [www.laneandholmes.co.uk](http://www.laneandholmes.co.uk) | 66-68 St Loyes Street, Bedford, Bedfordshire, MK40 1EZ

Agents Notes: The agent has not tested any apparatus, equipment, fixtures & fittings or services and so cannot verify that they are in working order or fit for the purpose. A buyer is advised to obtain verification from their solicitor or surveyor. All photographs shown are for illustration only and may depict items that are not for sale or included in the sale of the property. Please note that we have not checked the situation with regards to planning consents, building regulation consents and any other relevant consent relating to this property and therefore, any interested applicant should carry out their own enquiries with the appropriate authorities. All measurements are approximate and for guidance only. The particulars do not form part of any contract and all properties are offered subject to contract.

