



*jordan fishwick*

**WEST DIDSBURY**  
Larke Rise



## Larke Rise, West Didsbury, M20 2UL

Offers Over £199,950



### The Property

An appealing TOP FLOOR apartment located within the POPULAR LARKE RISE DEVELOPMENT, standing in LANDSCAPED grounds off Mersey Road in a GREAT LOCATION between Didsbury and West Didsbury Villages. 516 sq ft. The stylish living space benefits from gas central heating and double glazing throughout, with a generous open plan living/kitchen area, good sized bedroom and a contemporary shower room. In addition, there is a large communal entrance area, well tended communal gardens & grounds and allocated parking. Ideal for both first time buyers and investors. NO ONWARD CHAIN.

### Directions

M20 2UL



- Appealing top floor apartment
- Popular Larke Rise development
- Generous open plan Living/Kitchen area
- Good sized double bedroom
- Contemporary shower room
- Gas central heating
- Double glazed windows
- Allocated parking
- Landscaped gardens & grounds
- NO ONWARD CHAIN

Postcode - M20 2UL

EPC Rating - C

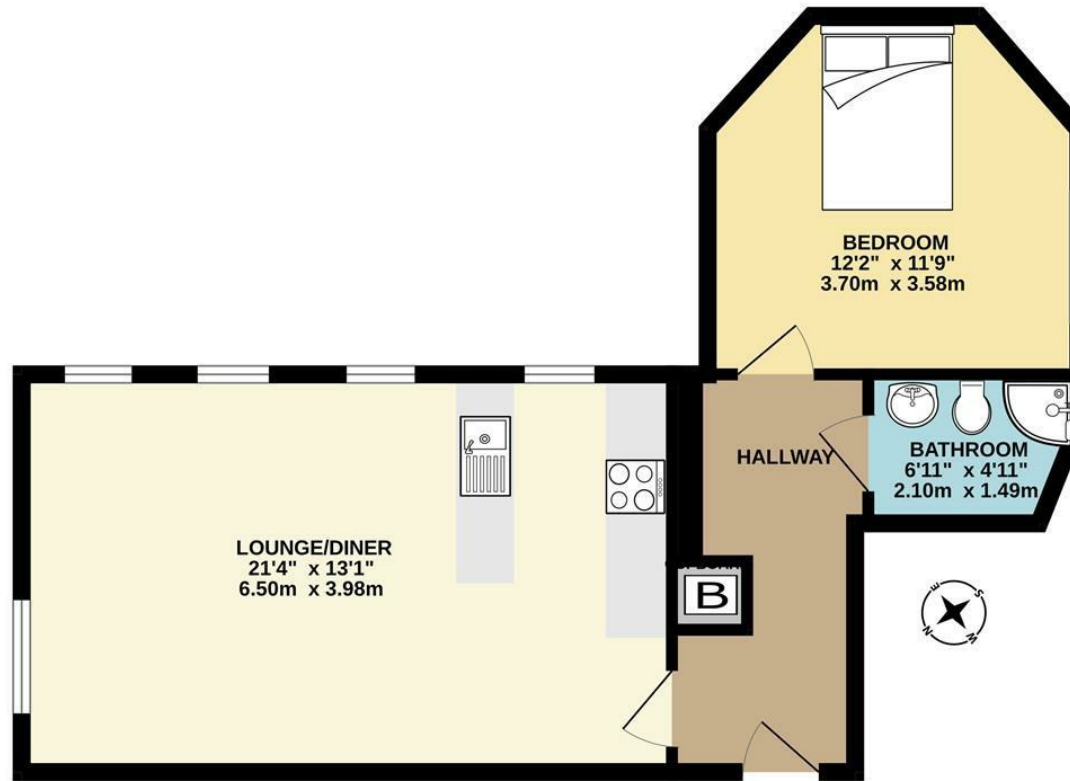
Floor Area - 516.00 sq ft

Local Authority - Manchester

Council Tax - C



GROUND FLOOR  
516 sq.ft. (47.9 sq.m.) approx.



TOTAL FLOOR AREA: 516 sq.ft. (47.9 sq.m.) approx.  
Measurements are approximate. Not to scale. Illustrative purposes only.  
Made with Metropix ©2023



These particulars are believed to be accurate but they are not guaranteed and do not form a contract. Neither Jordan Fishwick nor the vendor or lessor accept any responsibility in respect of these particulars, which are not intended to be statements or representations of fact and any intending purchaser or lessee must satisfy himself by inspection or otherwise as to the correctness of each of the statements contained in these particulars. Any floorplans on this brochure are for illustrative purposes only and are not necessarily to scale.

Offices also at: Wilmslow, Macclesfield, Hale, Sale, Chorlton, Glossop, Manchester & Salford

757-759 Wilmslow Road, Didsbury Village, Manchester

0161 445 4480

didsbury@jordanfishwick.co.uk  
www.jordanfishwick.co.uk