



jordan fishwick

FALLOWFIELD



, Fallowfield, M14 6NW

£2,947 Per Calendar Month



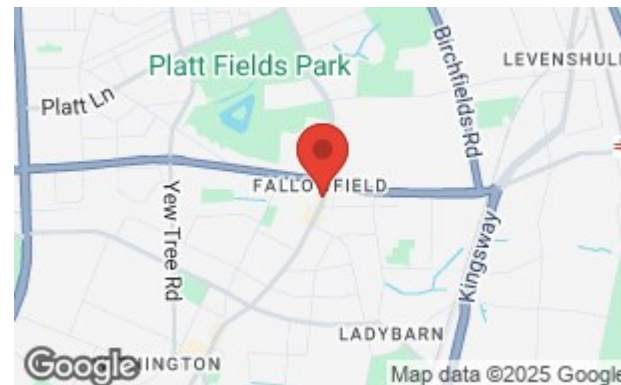
The Property

*** AVAILABLE 1st JULY 2026 *** £145.00 PPPW + £100.00 PPPW ***
 BILLS PACKAGE AVAILABLE *** Located in the heart of Fallowfield on Wilmslow Road this five bedroom apartment is perfectly positioned for bus routes, bars and shops. The property benefits from an open plan living area, modern fitted kitchen, four large double bedrooms, one further smaller room and bathroom. Each bedroom is fully furnished with a double bed, wardrobe, desk and chest of drawers. Viewings highly recommended! Nearby street parking only. Contact our Didsbury office to arrange a viewing

EPC Rating C // Council Tax Band A

Directions

M14 6NW



- Available 1st July 2026
- £145.00 + £100.00 PPPW
- Five Bedrooms
- Student Apartment
- Furnished
- Central Fallowfield Location
- Walking Distance to all Amenities
- Bills Package Available
- Council Tax Band A
- EPC Rating C

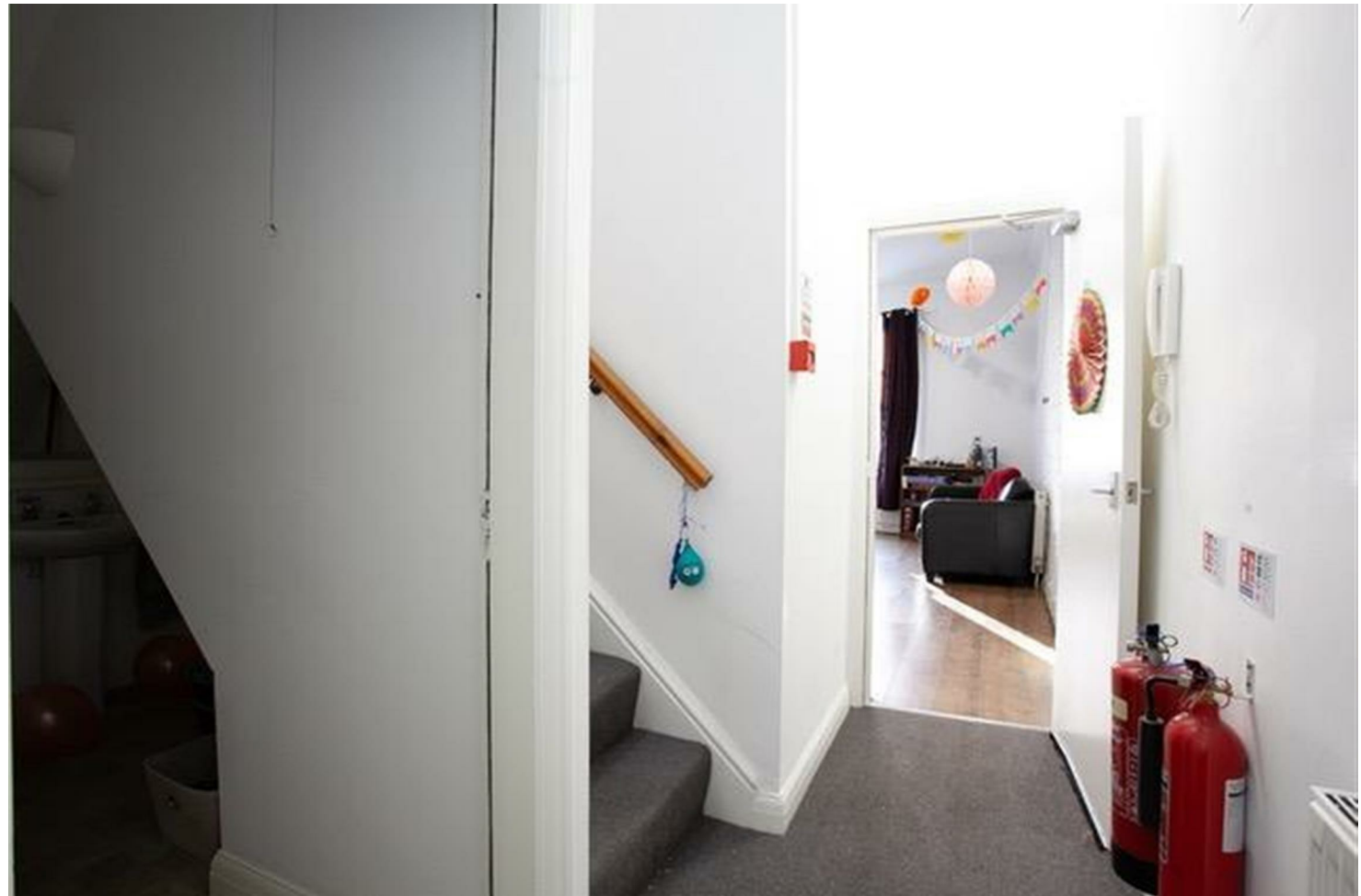
Postcode - M14 6NW

EPC Rating - C

Floor Area - sq ft

Local Authority - Manchester

Council Tax - B





These particulars are believed to be accurate but they are not guaranteed and do not form a contract. Neither Jordan Fishwick nor the vendor or lessor accept any responsibility in respect of these particulars, which are not intended to be statements or representations of fact and any intending purchaser or lessee must satisfy himself by inspection or otherwise as to the correctness of each of the statements contained in these particulars. Any floorplans on this brochure are for illustrative purposes only and are not necessarily to scale.

Offices also at: Wilmslow, Macclesfield, Hale, Sale, Chorlton, Glossop, Manchester & Salford

757-759 Wilmslow Road, Didsbury Village, Manchester

0161 445 4480

didsbury@jordanfishwick.co.uk
www.jordanfishwick.co.uk