



jordan fishwick

DIDSBURY
Barlow Moor Road



Barlow Moor Road, Didsbury, M20 2GJ

Guide Price £160,000



The Property

A spacious lower ground floor apartment with its own private entrance, forming part of an attractive Victorian conversion which is just a short stroll from Didsbury Village. 503 sq ft. Tastefully presented throughout and boasting both gas central heating and uPVC double glazing, the living space in outline comprises:- Private entrance, entrance hall with cloaks space and excellent fitted storage cupboards, living room to the front with walk-in bay, fitted kitchen, shower room with white suite and tiled walls and a double bedroom with ample space for freestanding furniture. Externally, there are communal grounds, gardens and residents parking to the rear of the building.

Directions

M20 2GJ



- Spacious apartment
- Living room with walk-in bay
- Fitted kitchen & shower room
- Double bedroom
- Generous entrance hall
- uPVC double glazing
- Gas central heating
- Communal gardens & parking
- Council tax band - A / EPC - C
- No onward chain

Postcode - M20 2GJ

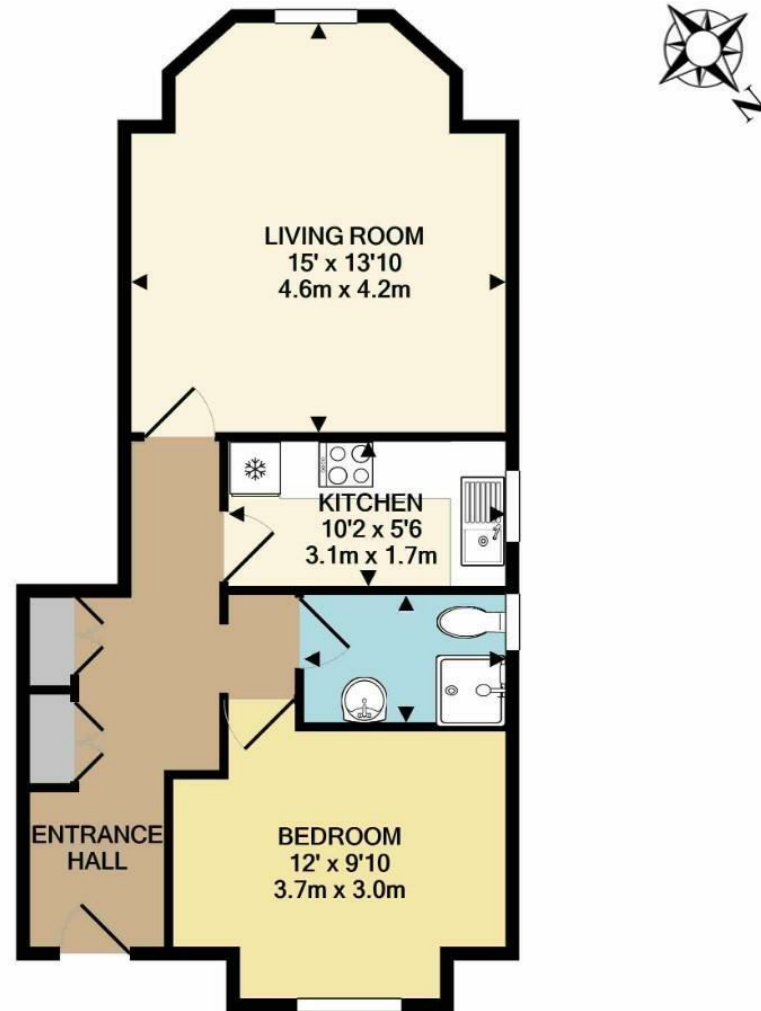
EPC Rating - C

Floor Area - 503.00 sq ft

Local Authority - Manchester City Council

Council Tax - A





TOTAL APPROX. FLOOR AREA 503 SQ.FT. (46.7 SQ.M.)
 Measurements are approximate. Not to scale. Illustrative purposes only
 Made with Metropix ©2021



These particulars are believed to be accurate but they are not guaranteed and do not form a contract. Neither Jordan Fishwick nor the vendor or lessor accept any responsibility in respect of these particulars, which are not intended to be statements or representations of fact and any intending purchaser or lessee must satisfy himself by inspection or otherwise as to the correctness of each of the statements contained in these particulars. Any floorplans on this brochure are for illustrative purposes only and are not necessarily to scale.

Offices also at: Wilmslow, Macclesfield, Hale, Sale, Chorlton, Glossop, Manchester & Salford

757-759 Wilmslow Road, Didsbury Village, Manchester

0161 445 4480

didsbury@jordanfishwick.co.uk
www.jordanfishwick.co.uk