



jordan fishwick

1 Brentbridge Road, Fallowfield, M14 6AU
Guide Price £2,058 Per Calendar Month



The Property

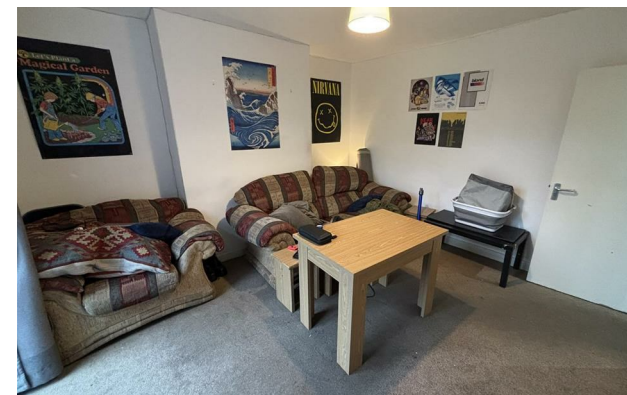
*** AVAILABLE 1st JULY 2026 *** £130.00 + £85.00 PPPW *** A spacious semi detached property available for the academic year 2026/2027. The property offers generous living space throughout and is ideally located within a stones throw of Wilmslow Road transport links, shops and restaurants. In brief, the property compromises; entrance hall, downstairs double bedroom, spacious lounge, generous kitchen including all appliances and a garden to the rear. To the first floor are a further two double bedrooms and 4th single bedroom. Fully furnished. Contact our Didsbury office to arrange a viewing

View our Virtual Tour Here - <https://youtu.be/LLq74cralQk>

EPC Rating - C // Council Tax Band C


**Brentbridge Road
Manchester M14 6AU**

£2,058 Per Calendar Month



- Available July 2026
- £130.00 PPPW + £85.00 PPPW
- Three Double & One Single Bedroom
- Student Property
- Good Sized Living Area
- Fully Furnished
- Parking
- Bills Package Available
- Council Tax Band C
- EPC Rating C



Energy Efficiency Rating		
	Current	Potential
Very energy efficient - lower running costs		
(92 plus) A		
(81-91) B		83
(69-80) C	70	
(55-68) D		
(39-54) E		
(21-38) F		
(1-20) G		
Not energy efficient - higher running costs		
England & Wales	EU Directive 2002/91/EC 	





These particulars are believed to be accurate but they are not guaranteed and do not form a contract. Neither Jordan Fishwick nor the vendor or lessor accept any responsibility in respect of these particulars, which are not intended to be statements or representations of fact and any intending purchaser or lessee must satisfy himself by inspection or otherwise as to the correctness of each of the statements contained in these particulars. Any floorplans on this brochure are for illustrative purposes only and are not necessarily to scale.

Offices at: Chorlton, Didsbury, Disley, Hale, Glossop, Macclesfield, Manchester Deansgate, Manchester Whitworth Street, New Mills, Sale, Wilmslow and Withington