



jordan fishwick

DIDSBURY
Leyland Avenue



**Leyland Avenue,
Didsbury, M20 6EW**
Offers Over £375,000

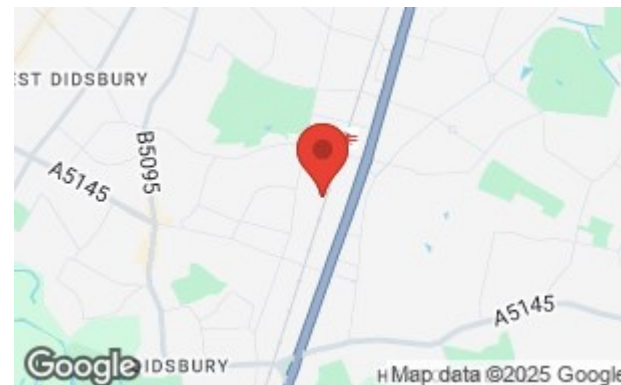


The Property

Superbly tucked away towards the end of a leafy, no through road, this three bedroom end mews property benefits from a two storey rear extension, spacious through lounge/dining room, fitted breakfast kitchen, additional sitting room, utility and in addition to the three good sized bedrooms, there is a bathroom and separate WC, To the front is an attractive and well stocked garden with an adjoining driveway providing parking, whilst at the rear is a small enclosed garden and paved seating areas.

Directions

M20 6EW



- Located on a no through road
- Two storey rear extension
- Spacious lounge/dining room
- Sitting room & utility
- Fitted breakfast kitchen
- Three bedrooms
- Bathroom & separate WC
- uPVC double glazing and gas central heating
- Attractive gardens
- Driveway providing parking



Postcode - M20 6EW

EPC Rating -

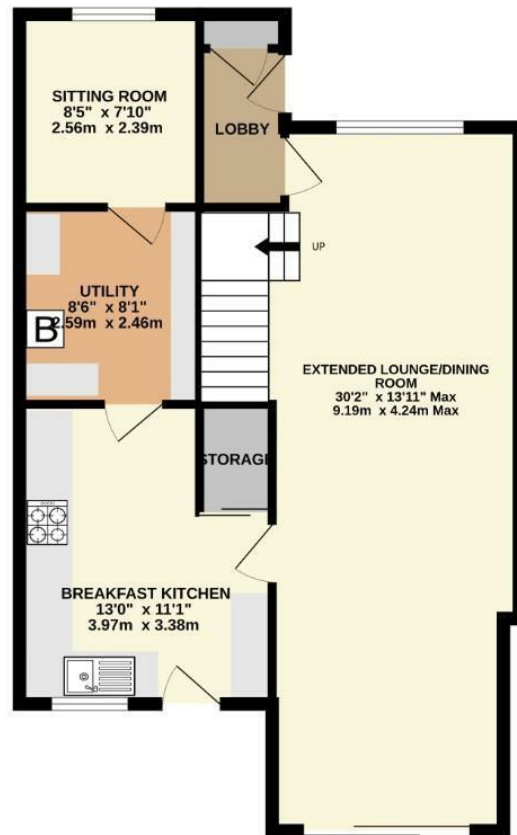
Floor Area - 1208.00 sq ft

Local Authority - Manchester City Council

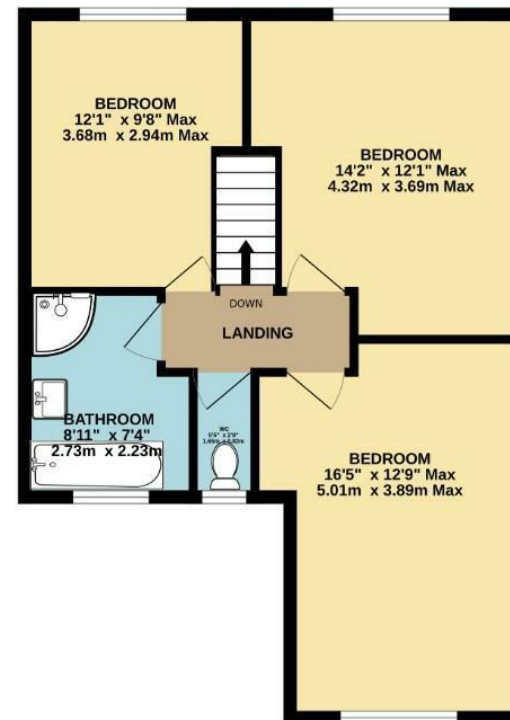
Council Tax - C



GROUND FLOOR
654 sq.ft. (60.7 sq.m.) approx.



1ST FLOOR
554 sq.ft. (51.4 sq.m.) approx.



TOTAL FLOOR AREA: 1208 sq.ft. (112.2 sq.m.) approx.
Measurements are approximate. Not to scale. Illustrative purposes only
Made with Metropix ©2025



These particulars are believed to be accurate but they are not guaranteed and do not form a contract. Neither Jordan Fishwick nor the vendor or lessor accept any responsibility in respect of these particulars, which are not intended to be statements or representations of fact and any intending purchaser or lessee must satisfy himself by inspection or otherwise as to the correctness of each of the statements contained in these particulars. Any floorplans on this brochure are for illustrative purposes only and are not necessarily to scale.

Offices also at: Wilmslow, Macclesfield, Hale, Sale, Chorlton, Glossop, Manchester & Salford

757-759 Wilmslow Road, Didsbury Village, Manchester

0161 445 4480

didsbury@jordanfishwick.co.uk
www.jordanfishwick.co.uk