



*jordan fishwick*

MANCHESTER  
Fog Lane





# Fog Lane, Manchester, M19 1UF

Guide Price £185,000

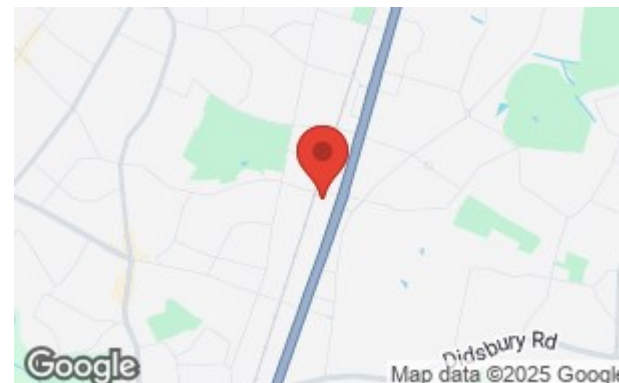


## The Property

A spacious two double bedroom, two bathroom apartment located on the first floor within a purpose built development that was constructed circa 2002. Enjoying a convenient location with easy access to Didsbury Village and excellent transport links by rail and along nearby Kingsway (A34). UPVC double glazed and well presented throughout, the living space in outline comprises:- Generous entrance hall with useful storage, lounge/dining room over 20ft with a 'Juliette' balcony, fitted kitchen with a range of units, two double bedrooms, en-suite shower room to the main and fitted bathroom with white suite. Externally, there is allocated residents parking and well tended communal gardens and grounds. Ideal for both first time buyers and investors but all buyers are welcome. \*\*NO ONWARD CHAIN\*\*

## Directions

M19 1UF





- Two double bedroom apartment
- Main bathroom & en-suite shower room
- Living room over 20ft
- Fitted kitchen with a range of units
- Generous entrance hall
- uPVC double glazing
- First floor position
- Allocated parking
- Communal gardens
- No onward chain

Postcode - M19 1UF

EPC Rating - B

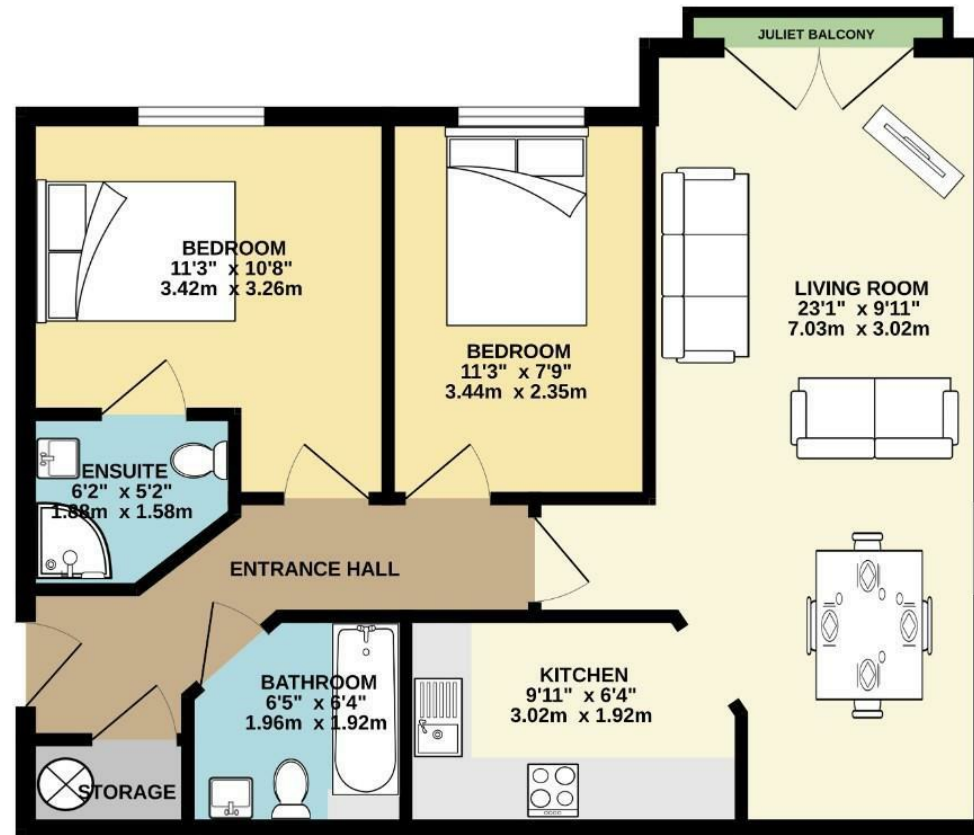
Floor Area - 616.00 sq ft

Local Authority - Manchester City Council

Council Tax - B



FIRST FLOOR  
616 sq.ft. (57.2 sq.m.) approx.



TOTAL FLOOR AREA: 616 sq.ft. (57.2 sq.m.) approx.  
Measurements are approximate. Not to scale. Illustrative purposes only.  
Made with Metagix 5/0025



These particulars are believed to be accurate but they are not guaranteed and do not form a contract. Neither Jordan Fishwick nor the vendor or lessor accept any responsibility in respect of these particulars, which are not intended to be statements or representations of fact and any intending purchaser or lessee must satisfy himself by inspection or otherwise as to the correctness of each of the statements contained in these particulars. Any floorplans on this brochure are for illustrative purposes only and are not necessarily to scale.

Offices also at: Wilmslow, Macclesfield, Hale, Sale, Chorlton, Glossop, Manchester & Salford

757-759 Wilmslow Road, Didsbury Village, Manchester

0161 445 4480

didsbury@jordanfishwick.co.uk  
www.jordanfishwick.co.uk