



jordan fishwick

WEST DIDSBURY
The Boulevard



The Boulevard, West Didsbury, M20 2EN

Offers Over £250,000



The Property

A superbly presented, two double bedroom, two bathroom apartment within a highly sought after development, constructed in 2014 and enjoying an enviable position. Located on the top floor, this light & airy apartment is ideal for any prospective purchasers seeking something spacious, modern and within easy reach of West Didsbury. On the ground floor of Albert House itself is the RX Gym and The Boulevard Deli, while a short walk away is fashionable Burton Road with its bars, restaurants, shops and The Metrolink. The property is presented to a high standard throughout with floor to ceiling windows, a Juliette balcony off the lounge, two spacious double bedrooms with the master having an en suite shower room and ample space for freestanding furniture and a modern, open plan kitchen with a range of units and integrated appliances. There is lift access to all floors and to the rear is an allocated gated parking space. **No onward chain**

Directions

M20 2EN



- Superb top floor apartment
- High level of presentation throughout
- Two double bedrooms
- Main bathroom & en-suite shower room
- Open plan living/kitchen area
- 'Juliette' balcony & full height windows
- Allocated gated parking space
- Lift access to all floors
- Ideal location in West Didsbury
- No onward chain

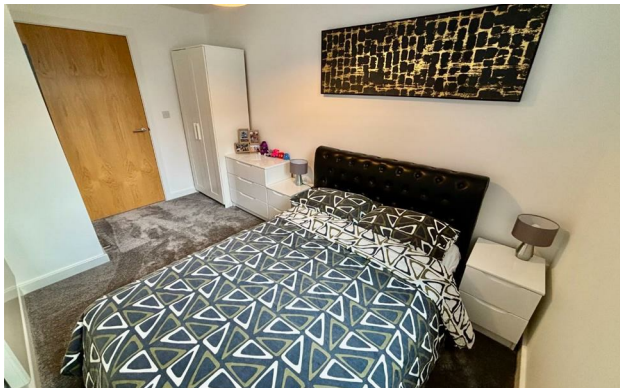
Postcode - M20 2EN

EPC Rating - D

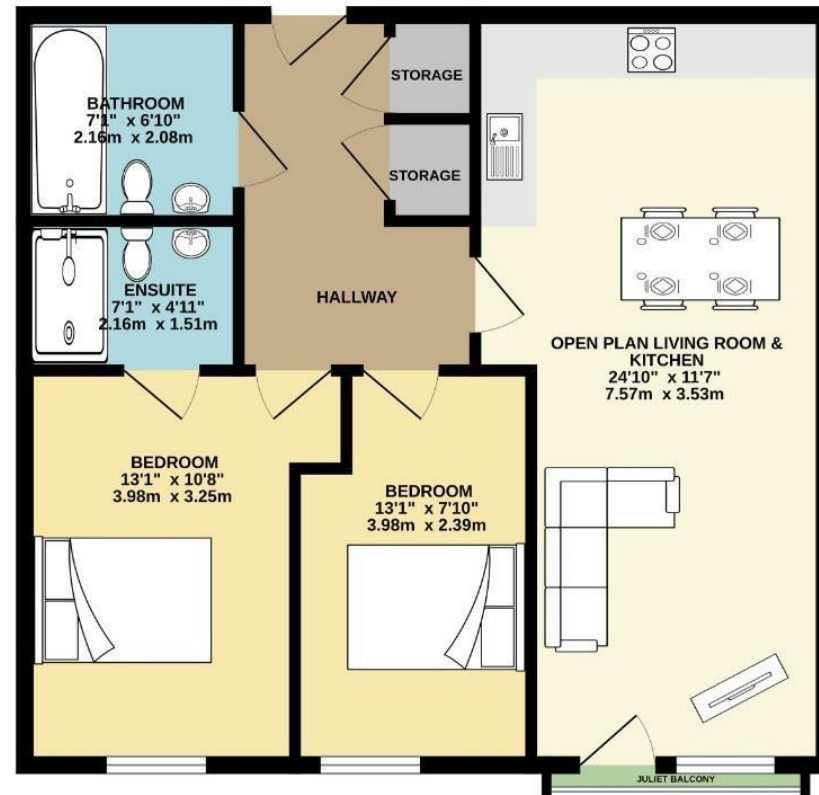
Floor Area - 658.00 sq ft

Local Authority - Manchester City Council

Council Tax - C



TOP FLOOR
658 sq.ft. (61.1 sq.m.) approx.



TOTAL FLOOR AREA: 658 sq.ft. (61.1 sq.m.) approx.
Measurements are approximate. Not to scale. Illustrative purposes only.
Made with Metapix ©2025



These particulars are believed to be accurate but they are not guaranteed and do not form a contract. Neither Jordan Fishwick nor the vendor or lessor accept any responsibility in respect of these particulars, which are not intended to be statements or representations of fact and any intending purchaser or lessee must satisfy himself by inspection or otherwise as to the correctness of each of the statements contained in these particulars. Any floorplans on this brochure are for illustrative purposes only and are not necessarily to scale.

Offices also at: Wilmslow, Macclesfield, Hale, Sale, Chorlton, Glossop, Manchester & Salford

757-759 Wilmslow Road, Didsbury Village, Manchester

0161 445 4480

didsbury@jordanfishwick.co.uk
www.jordanfishwick.co.uk