



jordan fishwick

WEST DIDSBURY
Georgia Avenue



Georgia Avenue, West Didsbury, M20 1LY

Guide Price £550,000

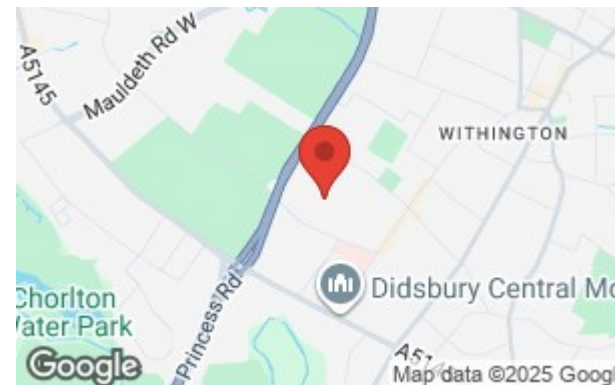


The Property

A spacious and superb semi-detached modern townhouse offering over 1800sq ft of living space on three floors, presented to a high standard with quality fittings throughout and an ideal location which is just a short stroll to Burton Road, featuring independent bars, shops and award-winning restaurants. The numerous noteworthy features include a generous entrance hall with WC off, fantastic open plan living/kitchen area with patio doors to the enclosed rear garden and an integral garage on the ground floor. The first floor landing gives way to three excellent double bedrooms, the main with an en-suite shower room and the family bathroom with 'Jack and Jill' doors leading to the second bedroom, with an impressive living room on the second floor with excellent eaves storage space and a balcony with elevated views. Externally, a driveway to the front provides parking and in turn leads to the garage, with a landscaped garden with a decking area to the rear. **No chain**

Directions

M20 1LY



- Superb semi detached townhouse
- Living space over three floors
- High level of presentation throughout
- Three excellent double bedrooms
- Family bathroom & en-suite shower room
- Open plan living/kitchen
- Top floor lounge with balcony
- Driveway & integral garage
- Great location in West Didsbury
- No chain

Postcode - M20 1LY

EPC Rating - C

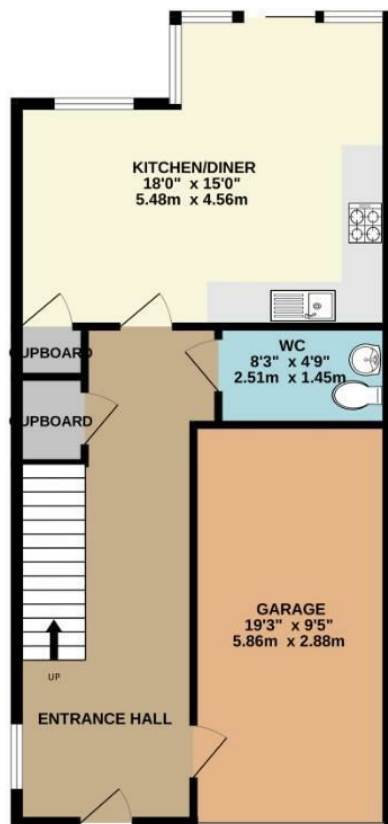
Floor Area - 1814.00 sq ft

Local Authority - Manchester City Council

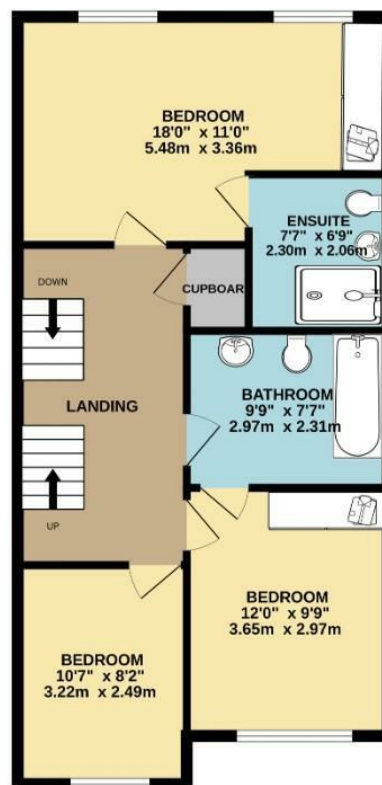
Council Tax - F



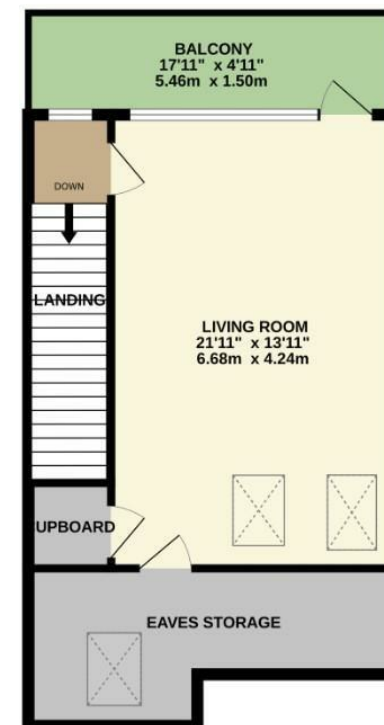
GROUND FLOOR
668 sq.ft. (62.1 sq.m.) approx.



1ST FLOOR
642 sq.ft. (59.6 sq.m.) approx.



2ND FLOOR
505 sq.ft. (46.9 sq.m.) approx.



TOTAL FLOOR AREA : 1814 sq.ft. (168.5 sq.m.) approx.
Measurements are approximate. Not to scale. Illustrative purposes only
Made with Metropix ©2025



These particulars are believed to be accurate but they are not guaranteed and do not form a contract. Neither Jordan Fishwick nor the vendor or lessor accept any responsibility in respect of these particulars, which are not intended to be statements or representations of fact and any intending purchaser or lessee must satisfy himself by inspection or otherwise as to the correctness of each of the statements contained in these particulars. Any floorplans on this brochure are for illustrative purposes only and are not necessarily to scale.

Offices also at: Wilmslow, Macclesfield, Hale, Sale, Chorlton, Glossop, Manchester & Salford

757-759 Wilmslow Road, Didsbury Village, Manchester

0161 445 4480

didsbury@jordanfishwick.co.uk
www.jordanfishwick.co.uk