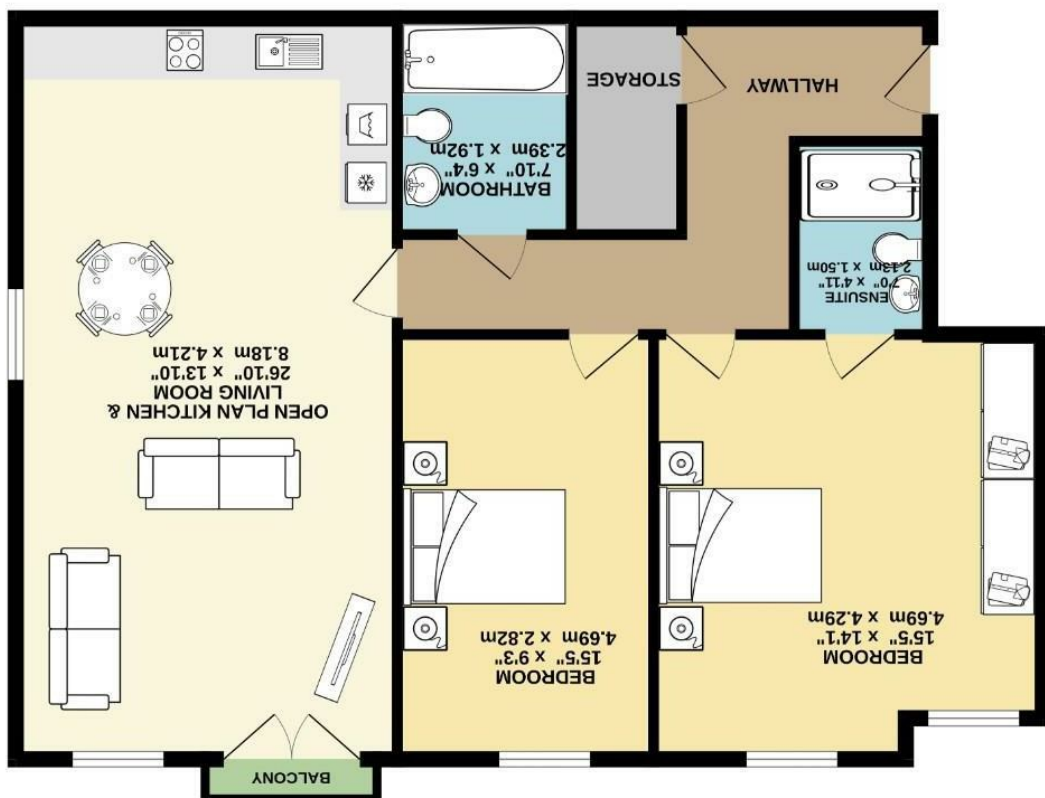


Fishwick nor the vendor or lessor accept any responsibility in respect of these particulars, which are not intended to be statements or representations of fact and any intending purchaser or lessee must satisfy himself by inspection or otherwise as to the correctness of each of the statements contained in these particulars. Any floorplans on this brochure are for illustrative purposes only and are not necessarily to scale.

TOTAL FLOOR AREA : 952sq ft (88.4 sq.m.) approx.
Measurements are approximate. Not to scale. Dimensions shown only.
Map not included (2025)



FIRST FLOOR
952 sq. ft. (88.4 sq.m.) approx.





Toddbrook Close, West Didsbury M20 1NB

£365,000

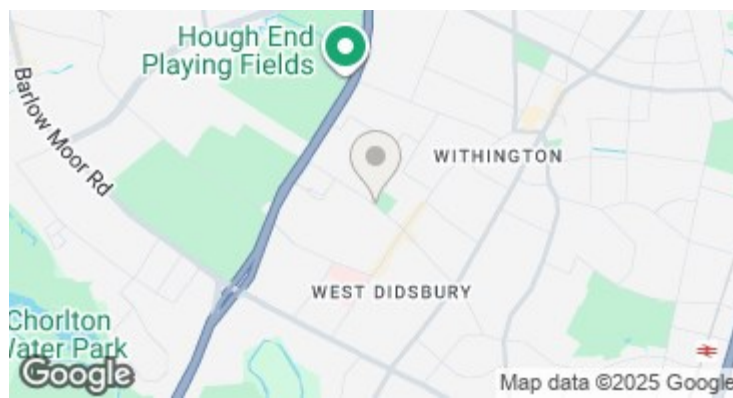


The Property

A stunning TWO DOUBLE BEDROOM apartment forming part of a RECENTLY CONSTRUCTED and EXTREMELY POPULAR purpose built development, set opposite CAVENDISH ROAD PARK and being within a SHORT STROLL of BURTON ROAD and its array of bars, restaurants and the tram stop. 943 sq ft. Enjoying a first floor position, the beautifully presented living space enjoys a welcoming communal entrance hall with access to the front and rear, private entrance hall with generous built-in storage cupboard, impressive dual aspect open plan living/kitchen area extending over 25 ft with Juliette balcony overlooking Cavendish Park, the kitchen area is fitted with a range of fitted units, integrated appliances and ample space for lounge & dining room furniture, two excellent double bedrooms with the master enjoying a contemporary en-suite shower room and fitted wardrobes, and the main bathroom with modern white suite and chrome fittings. Externally, there is allocated residents and visitor parking to the rear.

Directions

M20 1NB



- Stunning apartment
- Open plan living/kitchen over 25ft
- First floor position overlooking Cavendish Road Park
- Two spacious double bedrooms
- Bathroom & En-suite shower
- Kitchen with built in appliances
- Allocated residents parking
- West Didsbury location

Postcode - M20 1NB

EPC Rating - B

Floor Area - 952.00 sq ft

Local Authority - Manchester City Council

Council Tax - D

