



jordan fishwick

DIDSBURY VILLAGE
Ford Lane



Ford Lane, Didsbury Village, M20 2TJ

Offers Over £730,000



The Property

An impressive, four bedroom, three bathroom, family home which has been significantly extended with a generous garden hub/office and a superb location, overlooking a small green & woodland to the front and yet still within a short stroll of Didsbury Village. 1787sq ft. In outline :- Entrance hall with downstairs WC/shower room off, living room with feature fireplace, open plan family/kitchen with a comprehensive range of fitted units, central island and integrated appliances, spacious utility room with great storage, four bedrooms, one with en-suite shower room, and the luxury family bathroom. A block paved driveway provides ample parking, with a lovely enclosed garden at the rear, decked seating area, mature borders, bin store and the garden room. *No Onward Chain*

Directions

M20 2TJ



- Impressive family home
- Extended to the front, side & rear
- Four double bedrooms
- Three bathrooms
- Open plan family kitchen
- Generous utility room
- Landscaped rear garden
- Generous garden hub/home office
- Great location with lovely outlook
- No onward chain

Postcode - M20 2TJ

EPC Rating - C

Floor Area - 1787.00 sq ft

Local Authority - Manchester

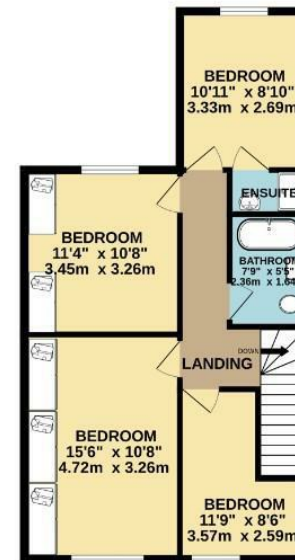
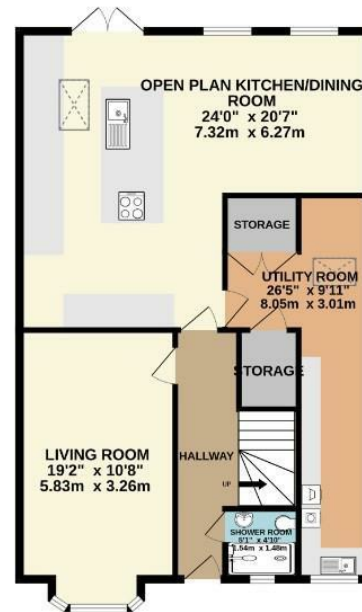
Council Tax - D



GROUND FLOOR
1164 sq.ft. (108.1 sq.m.) approx.



1ST FLOOR
623 sq.ft. (57.8 sq.m.) approx.



TOTAL FLOOR AREA : 1787 sq.ft. (166.0 sq.m.) approx.
Measurements are approximate. Not to scale. Illustrative purposes only
Made with Metropix ©2025



These particulars are believed to be accurate but they are not guaranteed and do not form a contract. Neither Jordan Fishwick nor the vendor or lessor accept any responsibility in respect of these particulars, which are not intended to be statements or representations of fact and any intending purchaser or lessee must satisfy himself by inspection or otherwise as to the correctness of each of the statements contained in these particulars. Any floorplans on this brochure are for illustrative purposes only and are not necessarily to scale.

Offices also at: Wilmslow, Macclesfield, Hale, Sale, Chorlton, Glossop, Manchester & Salford

757-759 Wilmslow Road, Didsbury Village, Manchester

0161 445 4480

didsbury@jordanfishwick.co.uk
www.jordanfishwick.co.uk