

We're Fully Booked

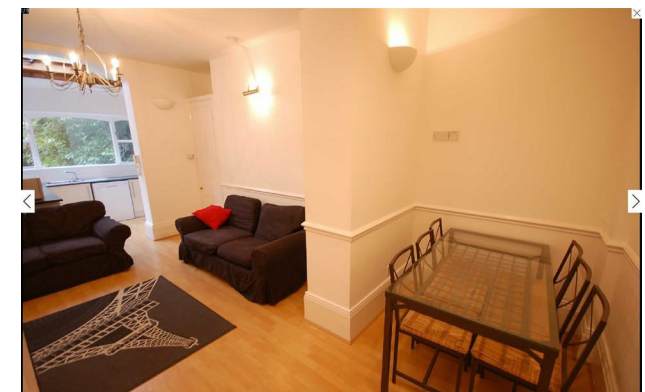
Due to the volume of interest on this property we are unable to offer any further viewings at this time.

Please register to ensure you see our new listings as they become available.



Clifton Avenue, Fallowfield, M14 6UB

£1,200 Per Calendar Month



The Property

*** AVAILABLE AUGUST *** A spacious and extremely well presented two bedroom ground floor apartment situated in Fallowfield. Close to local shops and transport routes it is ideally suited to a couple, single occupant or professional sharers. The accommodation briefly comprises; spacious entrance hall with original features, large lounge with separated dining area, fitted kitchen with range of appliances, two very large double bedrooms with plenty of storage and bathroom with white suite. Outside is a large private garden to the rear for sole use and off road parking. Fully Furnished. Contact our Didsbury office to arrange a viewing

View or Virtual Tour Here - <https://youtu.be/e-QCRWToB84>

EPC Rating - D // Council Tax Band B

Directions

M14 6UB



- Available August
- Two Large Double Bedrooms
- Great Sized Ground Floor Apartment
- Furnished
- Ideal for Couples or Sharers
- Great Location
- Sole Use of Garden
- Shared Driveway Parking
- Council Tax Band B
- EPC Rating - D

Postcode - M14 6UB

EPC Rating - C

Floor Area - sq ft

Local Authority - Manchester

Council Tax - B





These particulars are believed to be accurate but they are not guaranteed and do not form a contract. Neither Jordan Fishwick nor the vendor or lessor accept any responsibility in respect of these particulars, which are not intended to be statements or representations of fact and any intending purchaser or lessee must satisfy himself by inspection or otherwise as to the correctness of each of the statements contained in these particulars. Any floorplans on this brochure are for illustrative purposes only and are not necessarily to scale.

Offices also at: Wilmslow, Macclesfield, Hale, Sale, Chorlton, Glossop, Manchester & Salford

757-759 Wilmslow Road, Didsbury Village, Manchester

0161 445 4480

didsbury@jordanfishwick.co.uk
www.jordanfishwick.co.uk