



*jordan fishwick*

**WEST DIDSBURY**  
33 Highmarsh Crescent



## 33 Highmarsh Crescent, West Didsbury, M20 2AN

Guide Price £240,000



### The Property

A STYLISH AND TASTEFULLY PRESENTED TWO DOUBLE BEDROOM, FIRST FLOOR APARTMENT FORMING PART OF A POPULAR PURPOSE BUILT DEVELOPMENT IN WEST DIDSBURY. The vibrant shops, bars and restaurants along Burton Road, along with the Metrolink are all close at hand. Constructed by Messrs Taylor Wimpey and boasting numerous noteworthy features to include a welcoming entrance hall with built-in storage space, spacious living room with uPVC double glazed French doors opening to the balcony, modern kitchen with integrated appliances, two double bedrooms with fitted wardrobes, white bathroom suite with chrome fittings, uPVC double glazing, gas central heating, lift access to all floors, well tended communal gardens and gated allocated gated parking.

### Directions

M20 2AN



- Stylish first floor apartment
- Two double bedrooms
- Popular purpose built development
- Gated allocated parking
- Modern kitchen & integrated appliances
- White bathroom suite & chrome fittings
- Living room with balcony off
- uPVC double glazing & GCH
- Lift access to all floors
- Great location in West Didsbury

Postcode - M20 2AN

EPC Rating - C

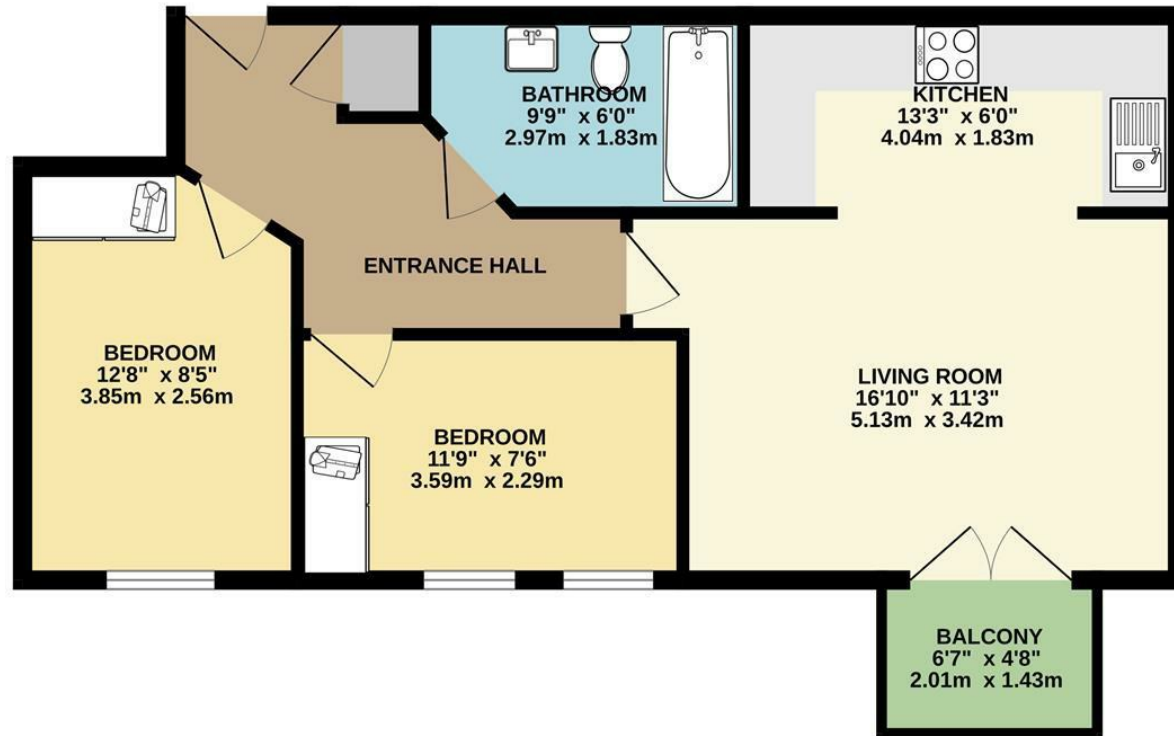
Floor Area - 586.00 sq ft

Local Authority - Manchester City Council

Council Tax - C



FIRST FLOOR  
586 sq.ft. (54.4 sq.m.) approx.



TOTAL FLOOR AREA : 586 sq.ft. (54.4 sq.m.) approx.  
Measurements are approximate. Not to scale. Illustrative purposes only  
Made with Metropix ©2025



These particulars are believed to be accurate but they are not guaranteed and do not form a contract. Neither Jordan Fishwick nor the vendor or lessor accept any responsibility in respect of these particulars, which are not intended to be statements or representations of fact and any intending purchaser or lessee must satisfy himself by inspection or otherwise as to the correctness of each of the statements contained in these particulars. Any floorplans on this brochure are for illustrative purposes only and are not necessarily to scale.

Offices also at: Wilmslow, Macclesfield, Hale, Sale, Chorlton, Glossop, Manchester & Salford

757-759 Wilmslow Road, Didsbury Village, Manchester

0161 445 4480

[didsbury@jordanfishwick.co.uk](mailto:didsbury@jordanfishwick.co.uk)  
[www.jordanfishwick.co.uk](http://www.jordanfishwick.co.uk)