



jordan fishwick

WEST DIDSBURY
Larke Rise



Larke Rise, West Didsbury, M20 2UL

£365,000



The Property

A most IMPRESSIVE first floor apartment located within the POPULAR LARKE RISE DEVELOPMENT, standing in LANDSCAPED grounds off Mersey Road in a GREAT LOCATION between Didsbury and West Didsbury Villages. 973 sq ft. The re decorated light and stylish living space is well planned with numerous noteworthy features including two excellent double bedrooms with ample space for freestanding furniture and the main with a modern en-suite shower room, large open plan kitchen/living area with integrated appliances and direct access to a separate orangery off, main bathroom with modern white suite and chrome fittings and a generous L-shaped entrance hall with cloaks space and built-in storage cupboards. The apartment enjoys a prime position within the block in addition to a large communal entrance area with security intercom & lift access to all floors, well-tended communal grounds and an allocated parking space plus visitor spaces. *No onward chain*

Directions

M20 2UL



- Impressive first floor apartment
- Popular gated development
- Great location in West Didsbury
- Two excellent double bedrooms
- Main bathroom & en-suite
- Large open plan living area/kitchen
- Separate orangery
- Lift access to all floors
- Resident & visitor parking
- No onward chain

Postcode - M20 2UL

EPC Rating - C

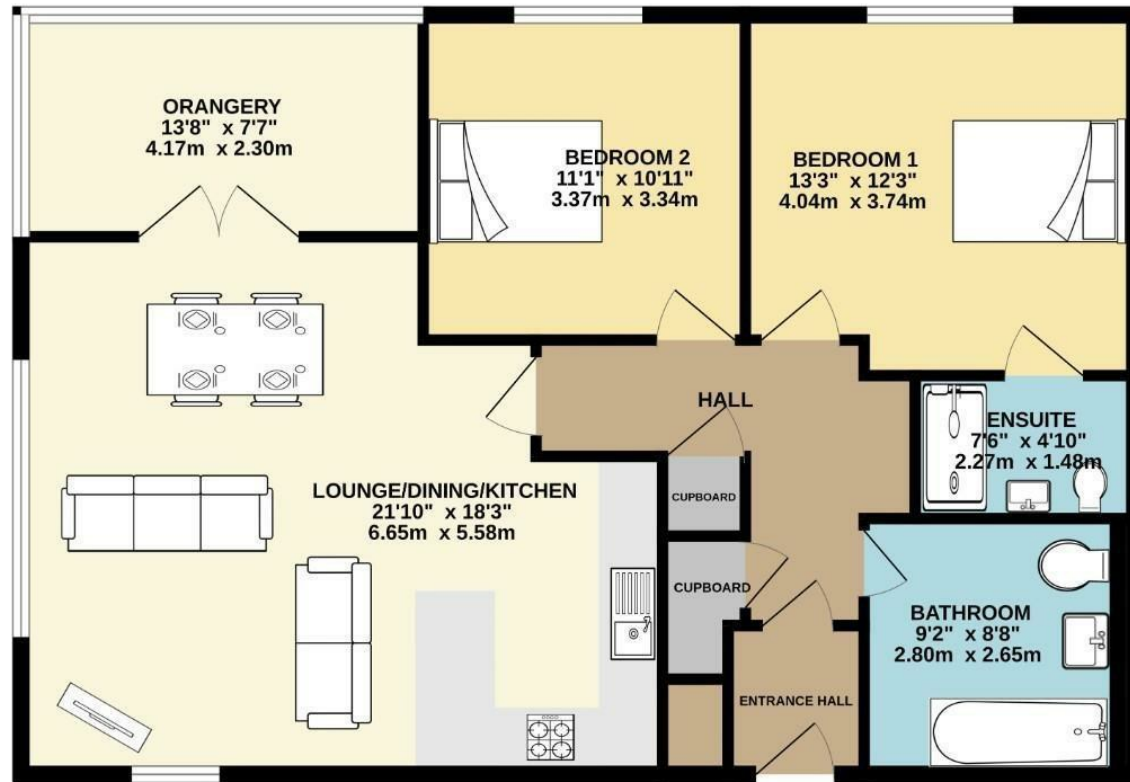
Floor Area - 973.00 sq ft

Local Authority - Manchester City Council

Council Tax - D



973 sq.ft. (90.4 sq.m.) approx.



TOTAL FLOOR AREA: 973 sq.ft. (90.4 sq.m.) approx.
Measurements are approximate. Not to scale. Illustrative purposes only.
Made with Metropix ©2025



These particulars are believed to be accurate but they are not guaranteed and do not form a contract. Neither Jordan Fishwick nor the vendor or lessor accept any responsibility in respect of these particulars, which are not intended to be statements or representations of fact and any intending purchaser or lessee must satisfy himself by inspection or otherwise as to the correctness of each of the statements contained in these particulars. Any floorplans on this brochure are for illustrative purposes only and are not necessarily to scale.

Offices also at: Wilmslow, Macclesfield, Hale, Sale, Chorlton, Glossop, Manchester & Salford

757-759 Wilmslow Road, Didsbury Village, Manchester

0161 445 4480

didsbury@jordanfishwick.co.uk
www.jordanfishwick.co.uk