



*jordan fishwick*

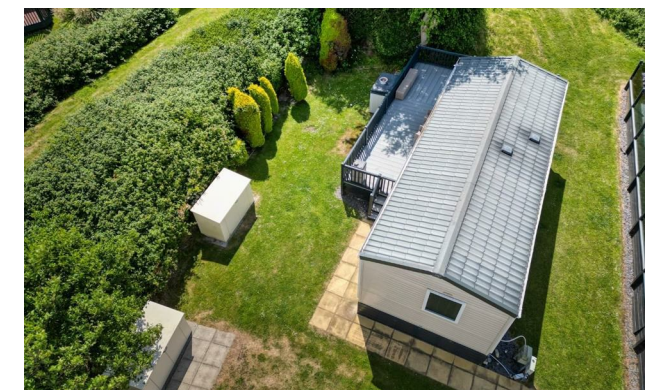
12A Knightsbridge, LL32 8GA  
£37,500





# Knightsbridge Conwy LL32 8GA

£37,500



Located at the end of the park this beautiful holiday home offers easy access to the stunning Morfa beach. The plot is truly unique offering sunshine all day and a private garden area with steps accessing the lawn. At the rear of the home are another set of steps providing access to a raised grass bank which offers stunning sea views.

\*2019 ABI Summerbreeze\* 32ft x 12ft\* 2 bedrooms with sofa bed in lounge- sleeps 6\* Bathroom with shower and ensuite\* wc to master bedroom\* Central heating with nest installed\* Double glazing\* Cooker, fridge freezer, hob, microwave & Gate-leg dining table\*.

All outside furniture and storage cabinets are included within the sale price. There's also an option for the home to be left furnished to include tv's, crockery, cutlery, pots, pans etc subject to negotiation. This holiday home could be ready to move into with everything that you need.

## Property Ownership Information

12A knightsbridge LL32 8GA

Pitch fee paid until 28/02/26 ( £7658 )

Lease end date- 23/07/2030








- Large Wrap around composite decking
- South Facing
- 5 Star resort open 12 months with 24/7 onsite security
- 6 x free memberships to luxury spa, gym and swimming pool
- Beautiful secluded plot and private garden
- Garden furniture included
- Fibre broadband connected
- Quiet cul-de-sac location, one minute walk to the beach
- Pitch fee paid until 28/02/26 ( £7658 )
- Lease end date- 23/07/2030



Energy Efficiency Rating		
	Current	Potential
Very energy efficient - lower running costs		
(92 plus) <b>A</b>		
(81-91) <b>B</b>		
(69-80) <b>C</b>		
(55-68) <b>D</b>		
(39-54) <b>E</b>		
(21-38) <b>F</b>		
(1-20) <b>G</b>		
Not energy efficient - higher running costs		
<b>England &amp; Wales</b>		EU Directive 2002/91/EC 





These particulars are believed to be accurate but they are not guaranteed and do not form a contract. Neither Jordan Fishwick nor the vendor or lessor accept any responsibility in respect of these particulars, which are not intended to be statements or representations of fact and any intending purchaser or lessee must satisfy himself by inspection or otherwise as to the correctness of each of the statements contained in these particulars. Any floorplans on this brochure are for illustrative purposes only and are not necessarily to scale.

Offices at: Chorlton, Didsbury, Disley, Hale, Glossop, Macclesfield, Manchester Deansgate, Manchester Whitworth Street, New Mills, Sale, Wilmslow and Withington

757-759 Wilmslow Road, Didsbury, Manchester, M20 6RN

**0161 445 4480**

[didsbury@jordanfishwick.co.uk](mailto:didsbury@jordanfishwick.co.uk)

[www.jordanfishwick.co.uk](http://www.jordanfishwick.co.uk)