



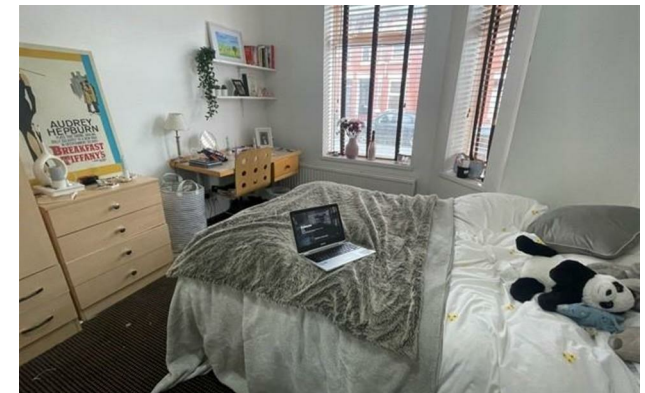
jordan fishwick

FALLOWFIELD
Standish Road



Standish Road, Fallowfield, M14 6NP

£2,340 Per Calendar Month



The Property

*** AVAILABLE 1st JULY 2025 *** £135.00 PPPW *** BILLS PACKAGE AVAILABLE *** A superbly located and spacious four double bedroom student property available for the academic year 2025/26. This property is situated in the heart of Fallowfield centre a stones throw from Sainsbury's and Wilmslow Road bus routes. In the brief, the property compromises; entrance hall, stylishly presented kitchen including all appliances, generous lounge, four double bedrooms, two shower rooms and two WCs. Fully Furnished. To view please contact our Didsbury office.

EPC Rating - D // Council Tax Band B

Directions

M14 6NP



- Available July 2025
- £135.00 PPPW
- Four Double Bedrooms
- Two Shower Rooms
- Fully Furnished
- Bills Package Available
- Great Location
- Council Tax Band B
- EPC Rating D

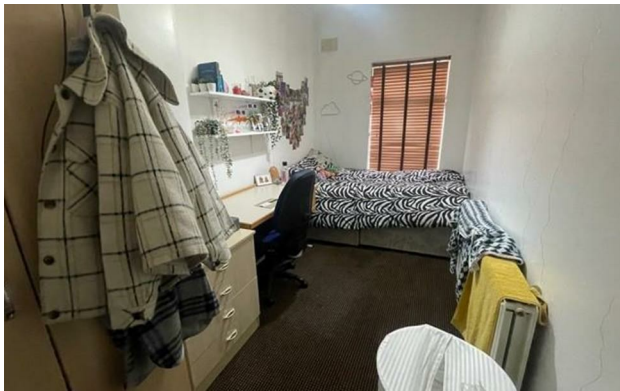
Postcode - M14 6NP

EPC Rating - D

Floor Area - sq ft

Local Authority - Manchester City Council

Council Tax - B





These particulars are believed to be accurate but they are not guaranteed and do not form a contract. Neither Jordan Fishwick nor the vendor or lessor accept any responsibility in respect of these particulars, which are not intended to be statements or representations of fact and any intending purchaser or lessee must satisfy himself by inspection or otherwise as to the correctness of each of the statements contained in these particulars. Any floorplans on this brochure are for illustrative purposes only and are not necessarily to scale.

Offices also at: Wilmslow, Macclesfield, Hale, Sale, Chorlton, Glossop, Manchester & Salford

757-759 Wilmslow Road, Didsbury Village, Manchester

0161 445 4480

didsbury@jordanfishwick.co.uk
www.jordanfishwick.co.uk