



jordan fishwick

DIDSBURY
Ballbrook Court



Ballbrook Court, Didsbury, M20 3QW

Guide Price £250,000

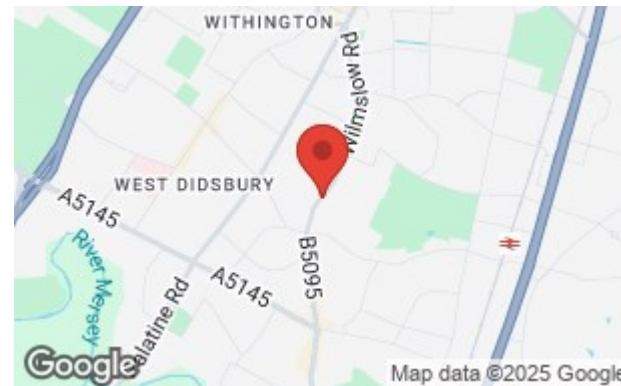


The Property

A delightful, TWO DOUBLE BEDROOM, first floor apartment enjoying a favourable position at the front of the sought after Ballbrook Court development, being within easy reach of both Didsbury and West Didsbury Villages, the Metrolink and Fog Lane Park. Stylishly presented throughout, the living space includes a generous L-shaped entrance hall with useful built-in storage/utility cupboard, lovely living room with pleasant outlook, a comprehensively fitted kitchen with a range of units and granite work surfaces, two excellent double bedrooms with ample space for bedroom furniture and a four-piece bathroom suite with chrome fittings. Other noteworthy features include an impressive solid oak parquet floor, uPVC double glazing, gas central heating, additional outside storage, ample residents parking, well-tended communal gardens and no onward chain.

Directions

M20 3QW



- Delightful first floor apartment
- Sought after Ballbrook Court
- Two excellent double bedrooms
- Lovely living room
- Comprehensively fitted kitchen
- Four-piece bathroom suite
- uPVC dbl glazing & Gas central heating
- Solid oak parquet floor
- Residents parking & well-tended gardens
- Great location

Postcode - M20 3QW

EPC Rating - C

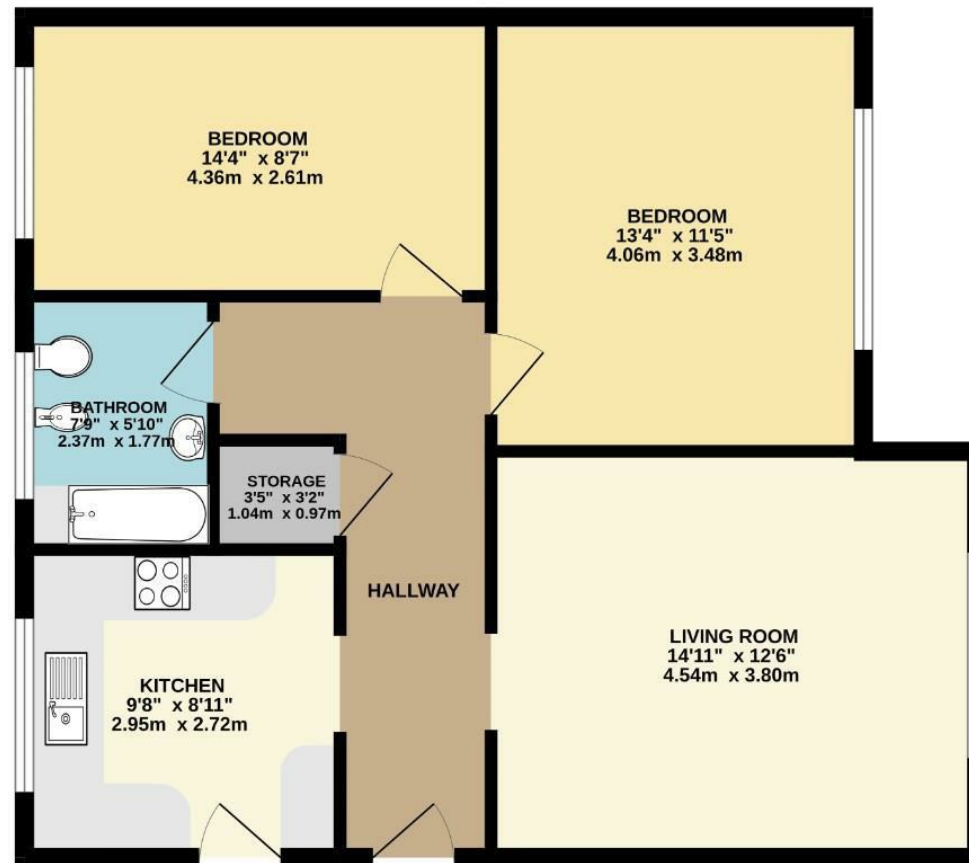
Floor Area - 707.00 sq ft

Local Authority - Manchester City Council

Council Tax - B



FIRST FLOOR
707 sq.ft. (65.7 sq.m.) approx.



TOTAL FLOOR AREA: 707 sq.ft. (65.7 sq.m.) approx.
Measurements are approximate. Not to scale. Illustrative purposes only.
Made with Metropix ©2025



These particulars are believed to be accurate but they are not guaranteed and do not form a contract. Neither Jordan Fishwick nor the vendor or lessor accept any responsibility in respect of these particulars, which are not intended to be statements or representations of fact and any intending purchaser or lessee must satisfy himself by inspection or otherwise as to the correctness of each of the statements contained in these particulars. Any floorplans on this brochure are for illustrative purposes only and are not necessarily to scale.

Offices also at: Wilmslow, Macclesfield, Hale, Sale, Chorlton, Glossop, Manchester & Salford

757-759 Wilmslow Road, Didsbury Village, Manchester

0161 445 4480

didsbury@jordanfishwick.co.uk
www.jordanfishwick.co.uk