



*jordan* fishwick

**WEST DIDSBURY**  
West Court





## West Court, West Didsbury, M20 2AL

Guide Price £250,000

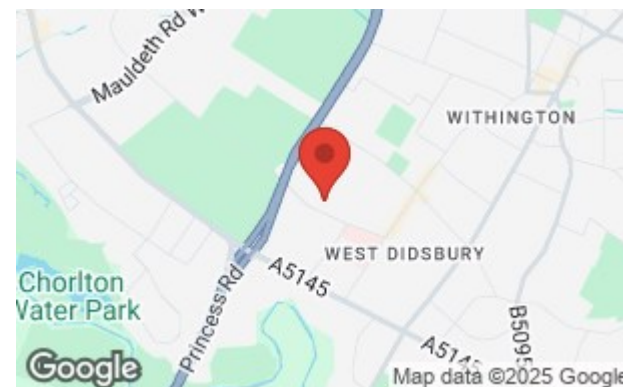


### The Property

A most appealing second floor apartment with generous balcony and stylish living space, forming part of the ever popular 'West Court' section of the Didsbury Gate development and lying within beautifully landscaped grounds. The accommodation has been well planned to include a fantastic open plan living room with balcony off, fitted kitchen with integrated appliances, double bedroom with fitted furniture and patio door to the balcony, contemporary bathroom with chrome fittings and the entrance hall with storage cupboards off. There is allocated parking and particularly impressive communal areas, grounds and gardens. West Court enjoys a fantastic location in West Didsbury, just off Burton Road. The vibrant shops, bars and restaurants, along with the Metrolink are all close at hand and as such it provides a great opportunity for purchasers. \*No onward chain\*

### Directions

M20 2AL





- Second floor apartment
- Popular Development
- Stylish living space
- Open plan living/Kitchen
- Double bedroom
- Fitted furniture
- Generous balcony
- Allocated parking
- Impressive communal area
- West Didsbury location

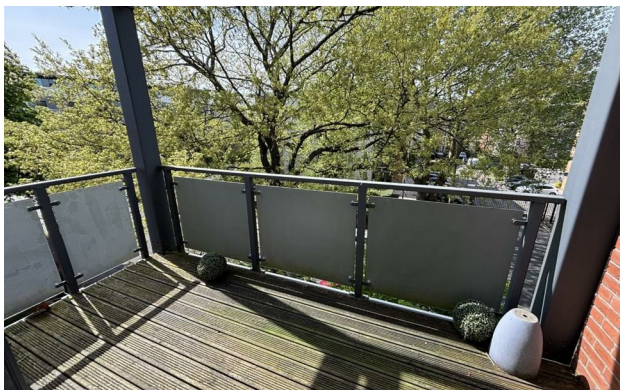
Postcode - M20 2AL

EPC Rating - B

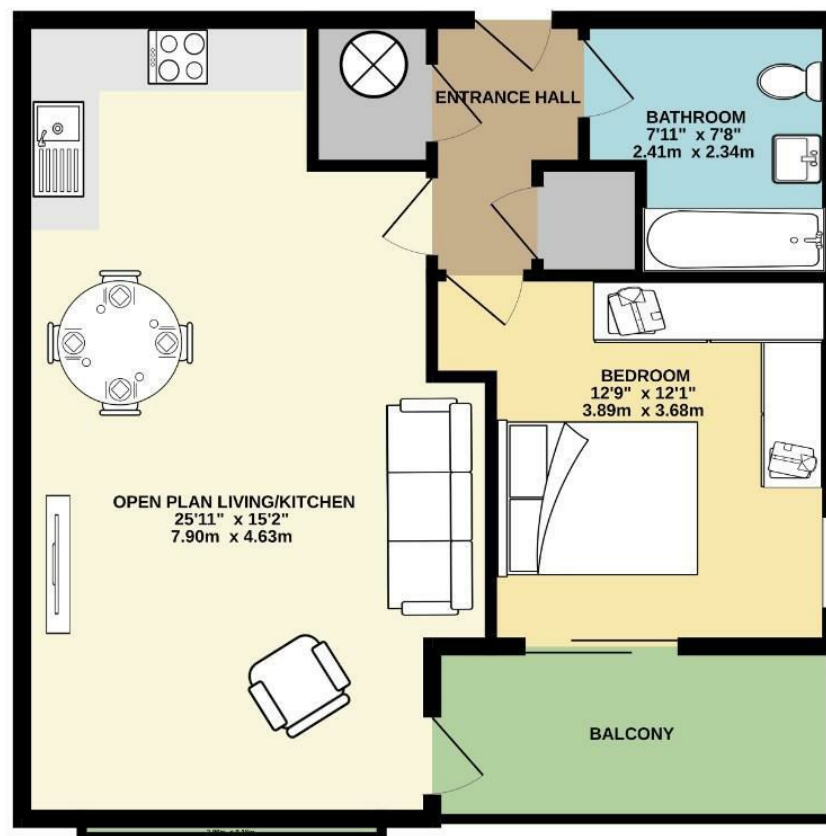
Floor Area - 606.00 sq ft

Local Authority - Manchester City Council

Council Tax - C



SECOND FLOOR  
606 sq.ft. (56.3 sq.m.) approx.



TOTAL FLOOR AREA : 606 sq.ft. (56.3 sq.m.) approx.  
Measurements are approximate. Not to scale. Illustrative purposes only.  
Made with Metropix ©2025



These particulars are believed to be accurate but they are not guaranteed and do not form a contract. Neither Jordan Fishwick nor the vendor or lessor accept any responsibility in respect of these particulars, which are not intended to be statements or representations of fact and any intending purchaser or lessee must satisfy himself by inspection or otherwise as to the correctness of each of the statements contained in these particulars. Any floorplans on this brochure are for illustrative purposes only and are not necessarily to scale.

Offices also at: Wilmslow, Macclesfield, Hale, Sale, Chorlton, Glossop, Manchester & Salford

757-759 Wilmslow Road, Didsbury Village, Manchester

0161 445 4480

didsbury@jordanfishwick.co.uk  
www.jordanfishwick.co.uk