



jordan fishwick

Mayfair Mansions Mersey Road, M20 2PY
Guide Price £525,000



Mersey Road West Didsbury M20 2PY

Guide Price £525,000




A cavernous and extremely unique garden apartment with over 1900 sq ft of living space, forming part of a striking period mansion that was originally the residence of the Italian Consulate and now provides a small number of individual properties with a secluded setting in West Didsbury. Numerous noteworthy features include a reception hall over 29ft, lovely open plan bespoke kitchen/dining area with a comprehensive range of units, central island and French doors to the outside terrace, spacious living room over 24ft, again with access to the terrace and separate access to the utility room, further split level lounge/bedroom over 24ft, main bedroom with fitted furniture and en-suite, further double bedroom with modern en-suite and an additional luxury bathroom. In addition to the walled terrace, there is a large stone chipped and gated forecourt to the front of the building providing ample residents parking. Mayfair Mansions combines the opportunity to live within walking distance of the vibrant and eclectic shops, restaurants and bars of West Didsbury & Didsbury Villages, whilst also offering outstanding commuter links to the city, airport and countryside beyond.



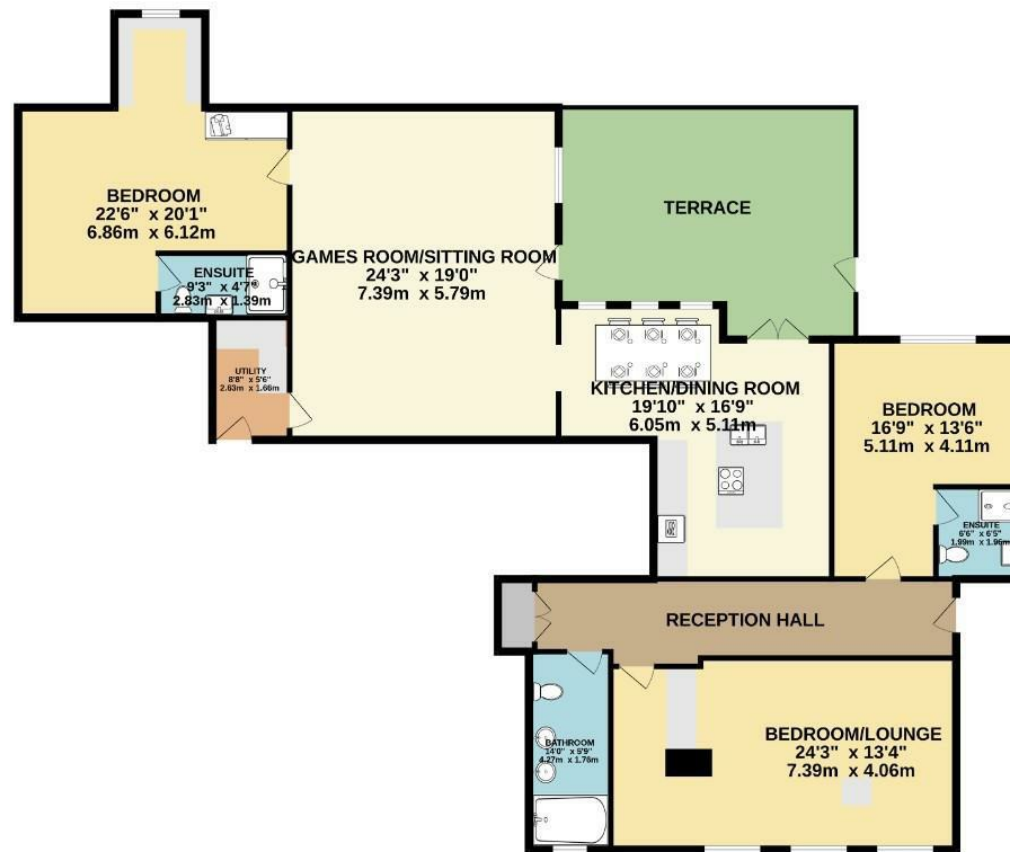
- Wonderful apartment over 1900 sq ft
- Extremely generous rooms throughout
- Part of a striking period mansion
- Bespoke open plan dining/kitchen
- Two excellent bedrooms with en-suite
- Additional bedroom/lounge over 24ft
- Living room over 24ft
- Luxury bathroom & useful utility
- Outside walled terrace
- Lovely setting in West Didsbury



| Energy Efficiency Rating | | |
|---|---------|---|
| | Current | Potential |
| Very energy efficient - lower running costs | | |
| (92 plus) A | | |
| (81-91) B | 80 | 82 |
| (69-80) C | | |
| (55-68) D | | |
| (39-54) E | | |
| (21-38) F | | |
| (1-20) G | | |
| Not energy efficient - higher running costs | | |
| England & Wales | | EU Directive 2002/91/EC  |



1926 sq.ft. (178.9 sq.m.) approx.



TOTAL FLOOR AREA: 1926 sq.ft. (178.9 sq.m.) approx.
Measurements are approximate. Not to scale. Illustrative purposes only.
Made with Metropix 6/2025



These particulars are believed to be accurate but they are not guaranteed and do not form a contract. Neither Jordan Fishwick nor the vendor or lessor accept any responsibility in respect of these particulars, which are not intended to be statements or representations of fact and any intending purchaser or lessee must satisfy himself by inspection or otherwise as to the correctness of each of the statements contained in these particulars. Any floorplans on this brochure are for illustrative purposes only and are not necessarily to scale.

Offices at: Chorlton, Didsbury, Disley, Hale, Glossop, Macclesfield, Manchester Deansgate, Manchester Whitworth Street, New Mills, Sale, Wilmslow and Withington

757-759 Wilmslow Road, Didsbury, Manchester, M20 6RN

0161 445 4480

didsbury@jordanfishwick.co.uk

www.jordanfishwick.co.uk