



jordan fishwick

DIDSBURY
Knightsbridge Mews



Knightsbridge Mews, Didsbury, M20 6GX

£535,000

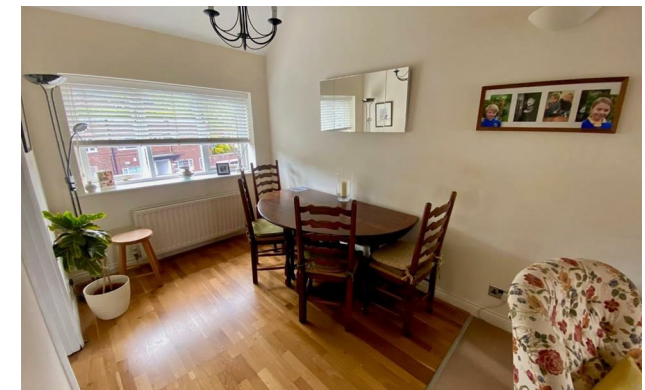


The Property

Located a short walk from Didsbury Village set within a select gated development, is this immaculate three-bed modern townhouse. Offering generous amount of living space over three floors, ideally positioned for great local schools, Metrolink Station, and easy access to a whole host of great shops, restaurants, and bars. The spacious accommodation comprises: a welcoming reception hallway with tiled flooring, under stairs WC, a separate utility room, and a double bedroom/office with built in wardrobes and direct access to the rear garden via sliding doors. To the first floor: Two generously sized double bedrooms, master bedroom with en-suite shower room. Alongside the bedrooms, there's a well-appointed three-piece family bathroom. To the second floor there is an impressive open plan living/dining room with vaulted ceilings and doors leading to a balcony at the front of the property. There is also a stylishly appointed kitchen which offers modern fitted units and worktops as well as the essential integrated appliances. Externally, the property is accessed via remote-controlled secure gates, offering off-road parking at the front in addition to the integrated garage. To the rear is a charming and great sized, landscaped garden with a patio area adjacent to the house leading on to a charming well stocked garden with gravel pathways, a small central pond and well stocked borders.

Directions

M20 6GX



- Modern 3 bed town house
- Select gated development
- Landscaped garden to rear
- Master bedroom with ensuite shower
- Integral garage
- Open plan living area with balcony
- Ample off road parking

Postcode - M20 6GX

EPC Rating - C

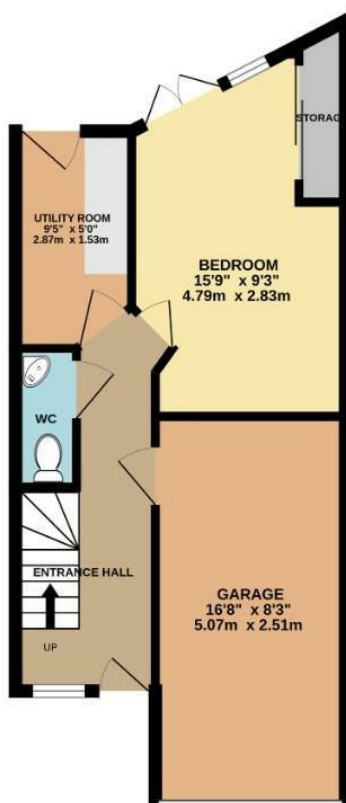
Floor Area - 1207.00 sq ft

Local Authority - Manchester City Council

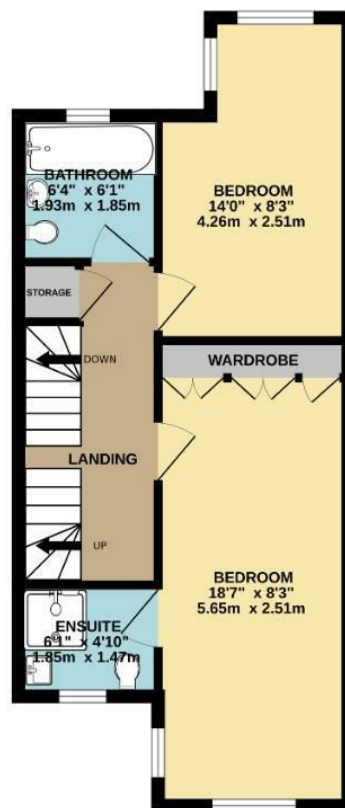
Council Tax - E



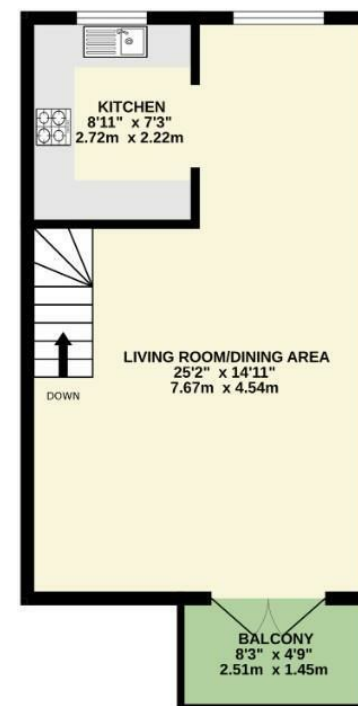
GROUND FLOOR
408 sq.ft. (37.9 sq.m.) approx.



1ST FLOOR
424 sq.ft. (39.4 sq.m.) approx.



2ND FLOOR
375 sq.ft. (34.8 sq.m.) approx.



TOTAL FLOOR AREA : 1207 sq.ft. (112.2 sq.m.) approx.
Measurements are approximate. Not to scale. Illustrative purposes only
Made with Metropix ©2025



These particulars are believed to be accurate but they are not guaranteed and do not form a contract. Neither Jordan Fishwick nor the vendor or lessor accept any responsibility in respect of these particulars, which are not intended to be statements or representations of fact and any intending purchaser or lessee must satisfy himself by inspection or otherwise as to the correctness of each of the statements contained in these particulars. Any floorplans on this brochure are for illustrative purposes only and are not necessarily to scale.

Offices also at: Wilmslow, Macclesfield, Hale, Sale, Chorlton, Glossop, Manchester & Salford

757-759 Wilmslow Road, Didsbury Village, Manchester

0161 445 4480

didsbury@jordanfishwick.co.uk
www.jordanfishwick.co.uk