



*jordan fishwick*

**DIDSBURY**  
Churchwood Road





## Churchwood Road, Didsbury, M20 6TZ

Guide Price £595,000



### The Property

An impressive, bay fronted, three double bedroom end terrace property having been tastefully modernised throughout, offering a superb level of living space over four floors which is coupled with a great location in Didsbury, being within a short stroll of the village and a range of vibrant shops, bars and restaurants. 1520 sq ft. The Metrolink is also nearby and as such it provides a great opportunity for professionals and families alike. Gas central heating is installed and further complemented by uPVC double glazing, with the accommodation boasting numerous noteworthy features including the three spacious bedrooms, a sociable contemporary kitchen with integrated appliances, lounge & separate dining area, luxury family bathroom and a modern en-suite shower room. In addition, there is a useful basement and a lovely walled garden with flagged seating area and lawn section.

### Directions

M20 6TZ





- Superb Victorian end terrace
- Three double bedrooms
- Modern bathroom & en-suite
- Impressive kitchen
- Lounge & separate dining area
- Useful basement
- Attractive walled garden
- Gas central heating
- uPVC double glazing
- Ideal location close to Didsbury Village

Postcode - M20 6TZ

EPC Rating - D

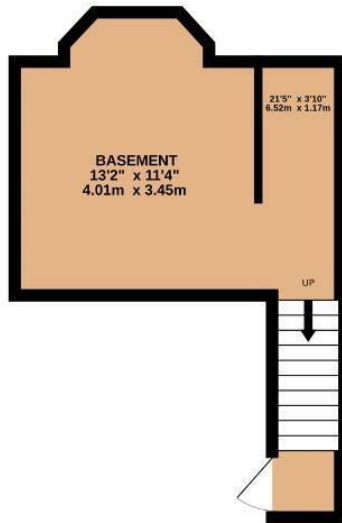
Floor Area - 1520.00 sq ft

Local Authority - Manchester City Council

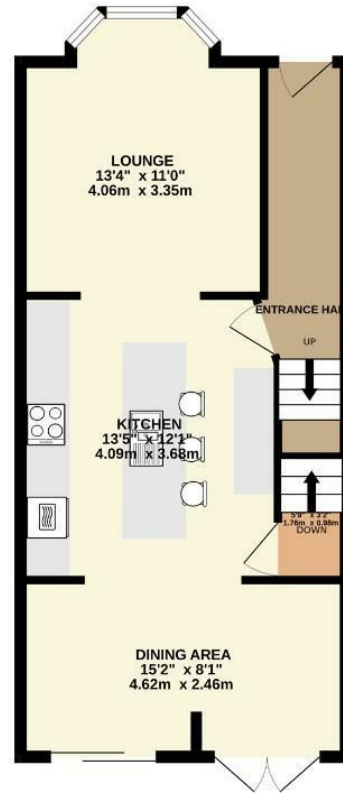
Council Tax - D



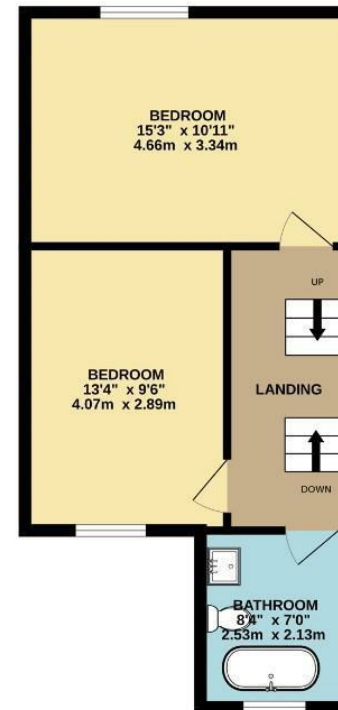
**BASEMENT**  
215 sq.ft. (19.9 sq.m.) approx.



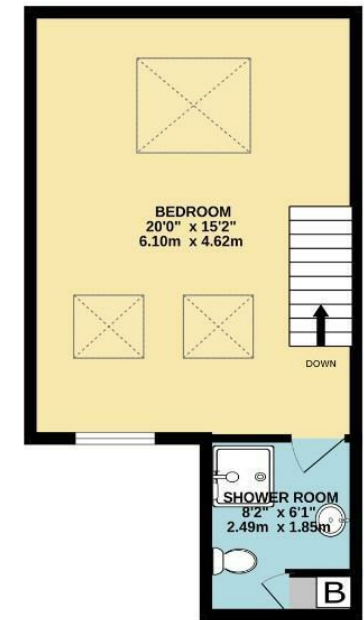
**GROUND FLOOR**  
511 sq.ft. (47.5 sq.m.) approx.



**1ST FLOOR**  
430 sq.ft. (40.0 sq.m.) approx.



**2ND FLOOR**  
364 sq.ft. (33.8 sq.m.) approx.



**TOTAL FLOOR AREA : 1520 sq.ft. (141.2 sq.m.) approx.**  
 Measurements are approximate. Not to scale. Illustrative purposes only  
 Made with Metropix ©2025



These particulars are believed to be accurate but they are not guaranteed and do not form a contract. Neither Jordan Fishwick nor the vendor or lessor accept any responsibility in respect of these particulars, which are not intended to be statements or representations of fact and any intending purchaser or lessee must satisfy himself by inspection or otherwise as to the correctness of each of the statements contained in these particulars. Any floorplans on this brochure are for illustrative purposes only and are not necessarily to scale.

Offices also at: Wilmslow, Macclesfield, Hale, Sale, Chorlton, Glossop, Manchester & Salford

757-759 Wilmslow Road, Didsbury Village, Manchester

**0161 445 4480**

didsbury@jordanfishwick.co.uk  
 www.jordanfishwick.co.uk