



jordan fishwick

WITHINGTON
St. Pauls Road



St. Pauls Road, Withington, M20 4PG

£235,000



The Property

Conveniently positioned for Withington village THIS TWO DOUBLE BEDROOM APARTMENT offers stylish and light accommodation, located on the ground floor the apartment is ideal for a professional couple or buy to let investor. Comprises briefly: Communal entrance hallway, private entrance hall, with built in storage cupboard, open plan living/dining area with fitted kitchen with integrated appliances, master bedroom with en-suite shower room, further double bedroom and a bathroom with a white suite and overbath shower. Gas central heating, double glazing and a security system are installed. Tidy communal gardens and private residents' car parking complete the impressive specification. NO CHAIN.

Directions

M20 4PG



- A two double bedroom ground floor apartment
- Withington village location
- Master bedroom with en suite shower room
- Allocated off road parking
- Large open plan living area with kitchen
- Double glazing
- New boiler installed in 2023
- New oven fitted in 2024
- Council Tax Band - C / EPC Rating - C

Postcode - M20 4PG

EPC Rating - C

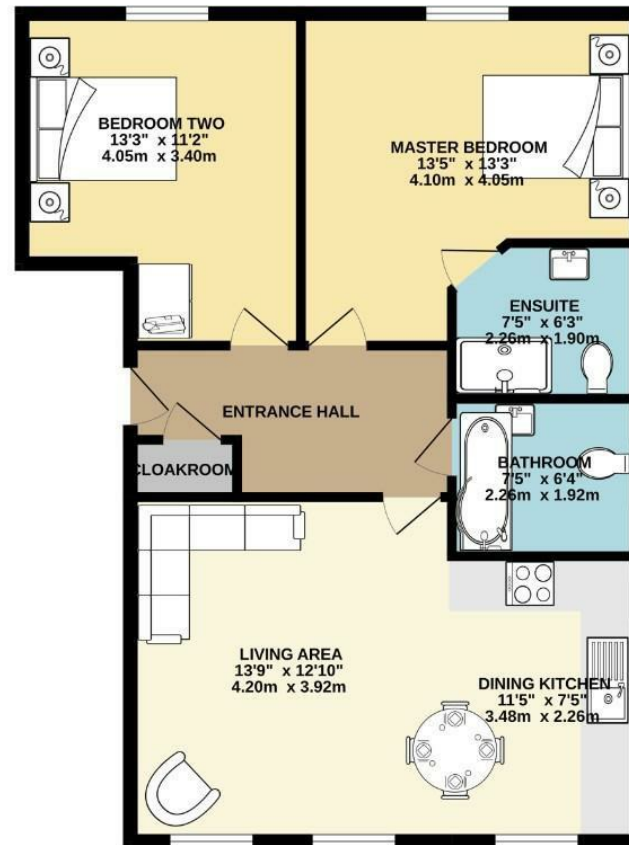
Floor Area - 715.00 sq ft

Local Authority - Manchester City Council

Council Tax - C



GROUND FLOOR
715 sq.ft. (66.4 sq.m.) approx.



TOTAL FLOOR AREA: 715 sq.ft. (66.4 sq.m.) approx.
Measurements are approximate. Not to scale. Illustrative purposes only.
Made with Metropix ©2025



These particulars are believed to be accurate but they are not guaranteed and do not form a contract. Neither Jordan Fishwick nor the vendor or lessor accept any responsibility in respect of these particulars, which are not intended to be statements or representations of fact and any intending purchaser or lessee must satisfy himself by inspection or otherwise as to the correctness of each of the statements contained in these particulars. Any floorplans on this brochure are for illustrative purposes only and are not necessarily to scale.

Offices also at: Wilmslow, Macclesfield, Hale, Sale, Chorlton, Glossop, Manchester & Salford

757-759 Wilmslow Road, Didsbury Village, Manchester

0161 445 4480

didsbury@jordanfishwick.co.uk
www.jordanfishwick.co.uk