



jordan fishwick

WEST DIDSBURY
Montmano Drive



Montmano Drive, West Didsbury, M20 2EB

£230,000



The Property

A STYLISH TWO DOUBLE BEDROOM TOP FLOOR APARTMENT FORMING PART OF A POPULAR PURPOSE BUILT GATED DEVELOPMENT WITH A GREAT LOCATION IN WEST DIDSBURY, BEING WITHIN A SHORT STROLL OF THE METROLINK AND THE EVER POPULAR BURTON ROAD. The apartment is thoughtfully laid out and in outline comprises:- Communal entrance hall, generous private entrance hall with built-in storage and cloaks space and views over Manchester's skyline , open plan living/kitchen area with fitted kitchen area with a range of base & eye level units and integrated appliances, two double bedrooms, the main with en-suite shower room and a spacious main bathroom that completes the internal living space. The apartment also benefits from double glazing and electric heating. Externally there is a gated residents car park to the rear with allocated parking.

Directions

M20 2EB



- Two double bedroom apartment
- Two bathroom
- Top floor position
- Views over Manchester skyline
- Secure gated development with parking
- Walking distance to Metro & Burton Road
- Open plan living/kitchen area
- No chain

Postcode - M20 2EB

EPC Rating - D

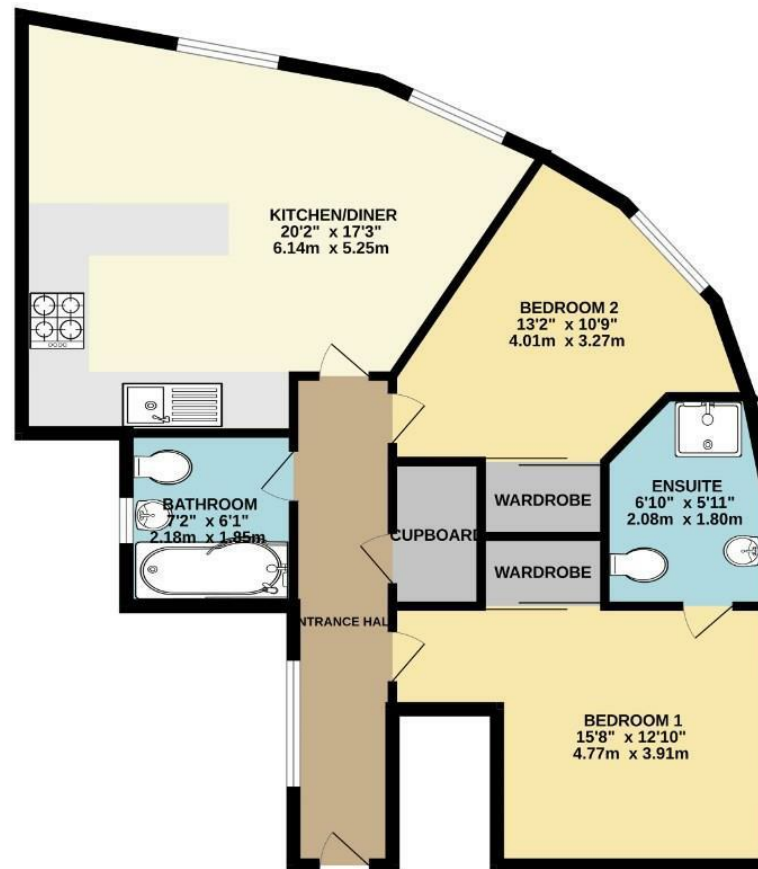
Floor Area - 766.00 sq ft

Local Authority - Manchester City Council

Council Tax - D



TOP FLOOR
766 sq.ft. (71.2 sq.m.) approx.



TOTAL FLOOR AREA: 766 sq.ft. (71.2 sq.m.) approx.
Measurements are approximate. Not to scale. Illustrative purposes only.
Made with Metropix ©2025.



These particulars are believed to be accurate but they are not guaranteed and do not form a contract. Neither Jordan Fishwick nor the vendor or lessor accept any responsibility in respect of these particulars, which are not intended to be statements or representations of fact and any intending purchaser or lessee must satisfy himself by inspection or otherwise as to the correctness of each of the statements contained in these particulars. Any floorplans on this brochure are for illustrative purposes only and are not necessarily to scale.

Offices also at: Wilmslow, Macclesfield, Hale, Sale, Chorlton, Glossop, Manchester & Salford

757-759 Wilmslow Road, Didsbury Village, Manchester

0161 445 4480

didsbury@jordanfishwick.co.uk
www.jordanfishwick.co.uk