



*jordan fishwick*

MANCHESTER  
Vicker Grove





## Vicker Grove, Manchester, M20 1LJ

Guide Price £330,000



### The Property

A classic terrace property enjoying a fantastic location on a small cul-de-sac in the heart of Fashionable West Didsbury, just off Burton Road. The vibrant shops, bars and restaurants of West Didsbury, along with the Metrolink are on the doorstep and as such it provides a great opportunity for professionals and small families alike. Gas central heating is installed and further complemented by uPVC double glazing, with the living space including two separate reception rooms, fitted kitchen with a range of units and two excellent double bedrooms, one with an en-suite bathroom and the other with en-suite shower room. Outside, there is an enclosed south facing courtyard to the rear. NO CHAIN

### Directions

M20 1LJ





- Central West Didsbury location
- Attractive period terrace
- Two separate reception rooms
- Two large double bedrooms
- En-suite bathroom & shower room
- South facing courtyard
- Gas central heating
- uPVC double glazing
- Close to metrolink
- NO CHAIN

Postcode - M20 1LJ

EPC Rating - D

Floor Area - 742.00 sq ft

Local Authority - Manchester City Council

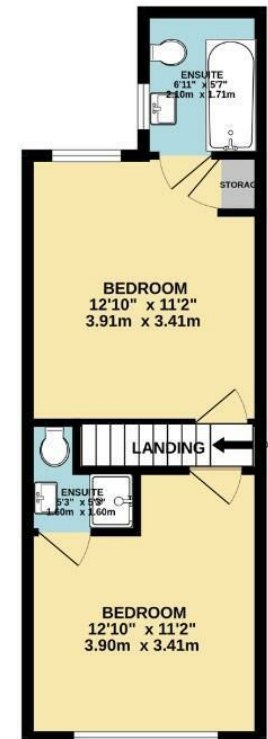
Council Tax - B



GROUND FLOOR  
390 sq ft. (36.3 sq.m.) approx.



1ST FLOOR  
351 sq ft. (32.6 sq.m.) approx.



TOTAL FLOOR AREA : 742 sq.ft. (68.9 sq.m.) approx.  
Measurements are approximate. Not to scale. Illustrative purposes only.  
Made with Metropix ©2025



These particulars are believed to be accurate but they are not guaranteed and do not form a contract. Neither Jordan Fishwick nor the vendor or lessor accept any responsibility in respect of these particulars, which are not intended to be statements or representations of fact and any intending purchaser or lessee must satisfy himself by inspection or otherwise as to the correctness of each of the statements contained in these particulars. Any floorplans on this brochure are for illustrative purposes only and are not necessarily to scale.

Offices also at: Wilmslow, Macclesfield, Hale, Sale, Chorlton, Glossop, Manchester & Salford

757-759 Wilmslow Road, Didsbury Village, Manchester

0161 445 4480

didsbury@jordanfishwick.co.uk  
www.jordanfishwick.co.uk