



jordan fishwick

FALLOWFIELD
Hart Road



Hart Road, Fallowfield, M14 7BA

£170,000

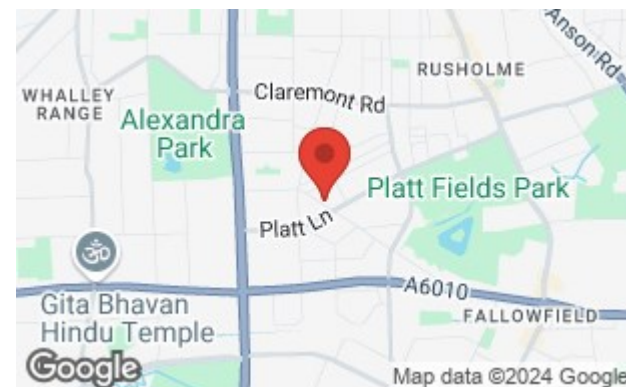


The Property

A most appealing, two double bedroom, first floor apartment forming part of a popular purpose built development that enjoys an ideal location just off Wilbraham Road, Suitable for a number of buyers including the first time buyer or buy to let landlord, offering easy access to the Universities and Manchester City Centre. The living space is extremely well presented and ready for immediate occupation, with a good size entrance hall, open plan lounge/dining room/kitchen with views over Plat Fields Park, two double bedrooms and bathroom with white suite and over bath shower. Externally, there are well tended communal grounds and private residents parking, double glazing and electric heating completes the impressive specification. No chain. EPC B

Directions

M14 7BA



- A two bedroom first floor apartment
- Open plan living/kitchen area
- Double glazed & electric heating
- Private residents allocated parking
- Close to all amenities
- No chain

Postcode - M14 7BA

EPC Rating - B

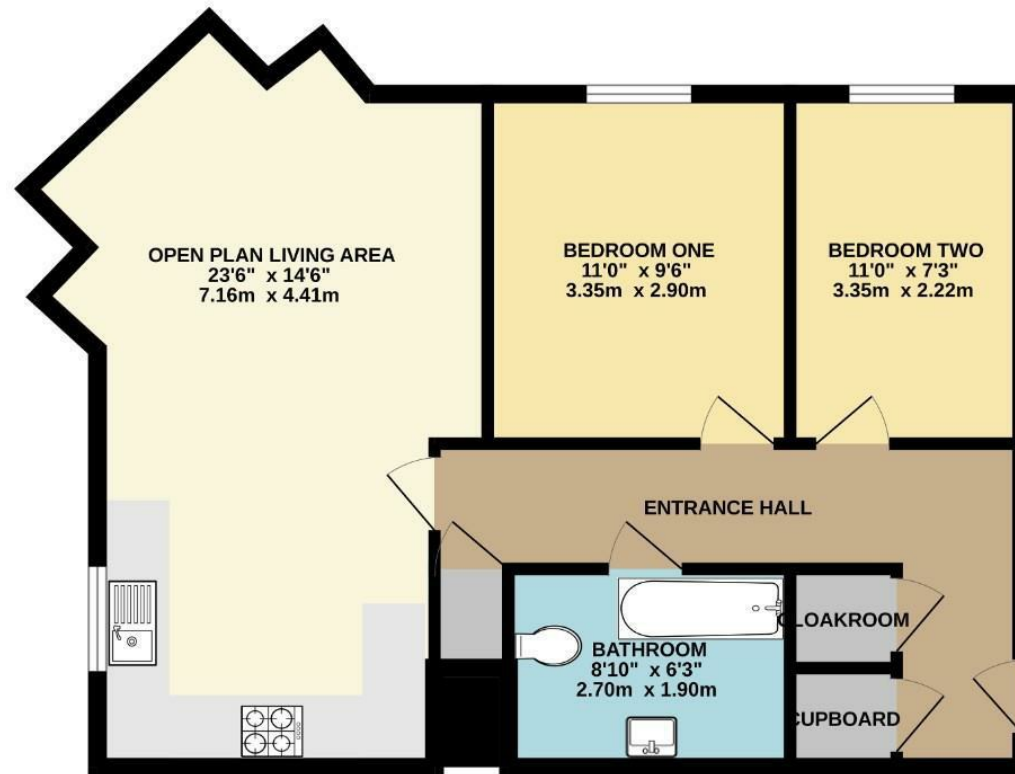
Floor Area - 624.00 sq ft

Local Authority - Manchester City Council

Council Tax - C



FIRST FLOOR
624 sq.ft. (58.0 sq.m.) approx.



TOTAL FLOOR AREA: 624 sq.ft. (58.0 sq.m.) approx.
Measurements are approximate. Not to scale. Illustrative purposes only.
Made with Metropac ©2024



These particulars are believed to be accurate but they are not guaranteed and do not form a contract. Neither Jordan Fishwick nor the vendor or lessor accept any responsibility in respect of these particulars, which are not intended to be statements or representations of fact and any intending purchaser or lessee must satisfy himself by inspection or otherwise as to the correctness of each of the statements contained in these particulars. Any floorplans on this brochure are for illustrative purposes only and are not necessarily to scale.

Offices also at: Wilmslow, Macclesfield, Hale, Sale, Chorlton, Glossop, Manchester & Salford

757-759 Wilmslow Road, Didsbury Village, Manchester

0161 445 4480

didsbury@jordanfishwick.co.uk
www.jordanfishwick.co.uk