



jordan fishwick

WEST DIDSBURY
Quantum House



Quantum House, West Didsbury, M20 2NE

£420,000



The Property

A stylishly presented, modern raised ground floor, two double bedroom apartment in the impressive new development of Quantum House on Kensal Drive in West Didsbury commissioned by Messrs PJ Livesey. Lying within beautifully presented grounds with quality fittings, the living space comprises: - Entrance hallway with 2 large storage cupboards, a large open plan living/dining and kitchen area spanning over 29ft, with integrated Neff appliances including dishwasher, fridge/freezer and gas hob, with granite worktops and breakfast bar and patio doors leading to a large/private south westerly facing balcony, master bedroom over 22ft with fitted wardrobes and spacious modern en-suite shower room with chrome fittings, second bedroom over 18ft, main bathroom with chrome fittings. Expansive communal lounge, lift and 2 secure parking spaces. Located in West Didsbury within walking distance to all amenities and Metro Station.

Directions

M20 2NE



- Beautifully presented raised ground floor apartment
- Large south westerly facing balcony
- Spacious living/dining area
- Fully integrated kitchen with Neff appliances
- Two excellent double bedrooms
- Two allocated secure parking spaces
- Luxury bathroom & en-suite shower room

Postcode - M20 2NE

EPC Rating - B

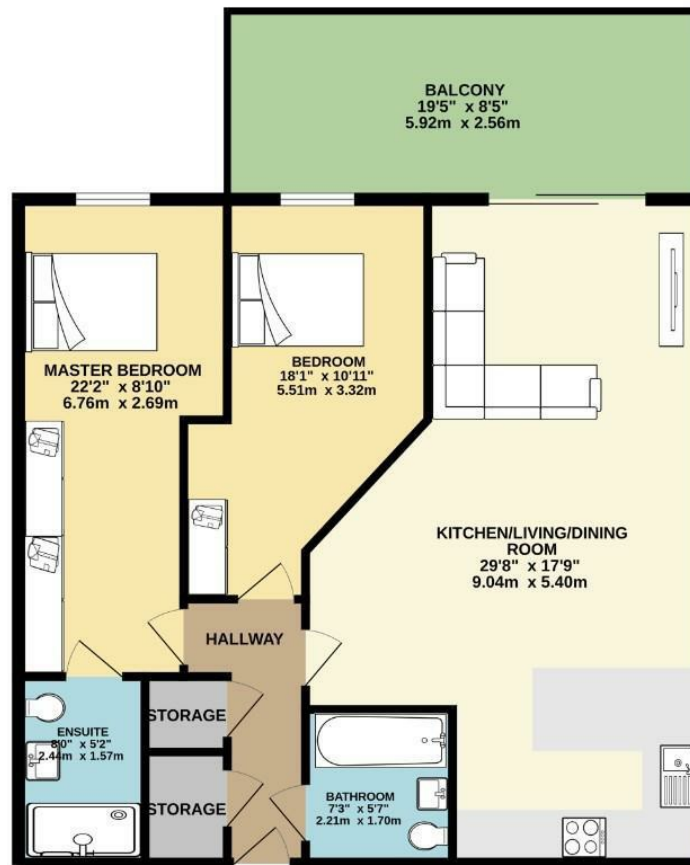
Floor Area - 906.00 sq ft

Local Authority - Manchester City Council

Council Tax - D



GROUND FLOOR
906 sq.ft. (84.2 sq.m.) approx.



TOTAL FLOOR AREA : 906 sq.ft. (84.2 sq.m.) approx.
Measurements are approximate. Not to scale. Illustrative purposes only.
Made with Metropix ©2004



These particulars are believed to be accurate but they are not guaranteed and do not form a contract. Neither Jordan Fishwick nor the vendor or lessor accept any responsibility in respect of these particulars, which are not intended to be statements or representations of fact and any intending purchaser or lessee must satisfy himself by inspection or otherwise as to the correctness of each of the statements contained in these particulars. Any floorplans on this brochure are for illustrative purposes only and are not necessarily to scale.

Offices also at: Wilmslow, Macclesfield, Hale, Sale, Chorlton, Glossop, Manchester & Salford

757-759 Wilmslow Road, Didsbury Village, Manchester

0161 445 4480

didsbury@jordanfishwick.co.uk
www.jordanfishwick.co.uk