



jordan fishwick

LADYBARN
Kingswood Road



Kingswood Road, Ladybarn, M14 6RZ

£175,000

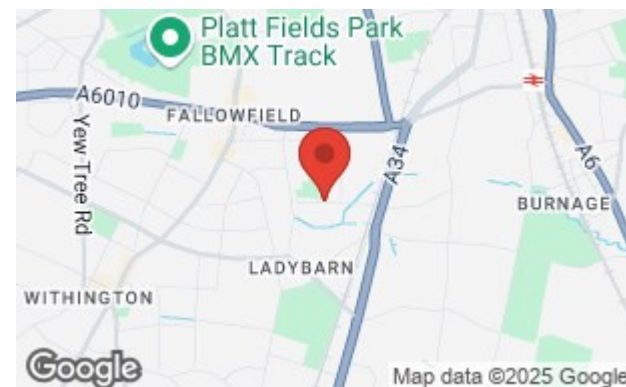


The Property

A particularly well presented, first floor, two double bedroom apartment being set back from a quiet residential road in Fallowfield with good sized gardens and easy access to Withington Village and Manchester City Centre. The living space is warmed by gas fired central heating, which is further complemented by uPVC double glazing and in outline comprises:- Ground floor entrance hall, first floor landing area, living room, modern dining kitchen, two double bedrooms and bathroom. Externally, there is a good sized garden to the side of property, with a further, fully enclosed lawned garden to the rear.

Directions

M14 6RZ



- Two double bedroom
- First floor
- Large private garden
- Gas central heating
- Double glazed throughout
- Ideal first time purchase
- Close to amenities
- No chain

Postcode - M14 6RZ

EPC Rating - C

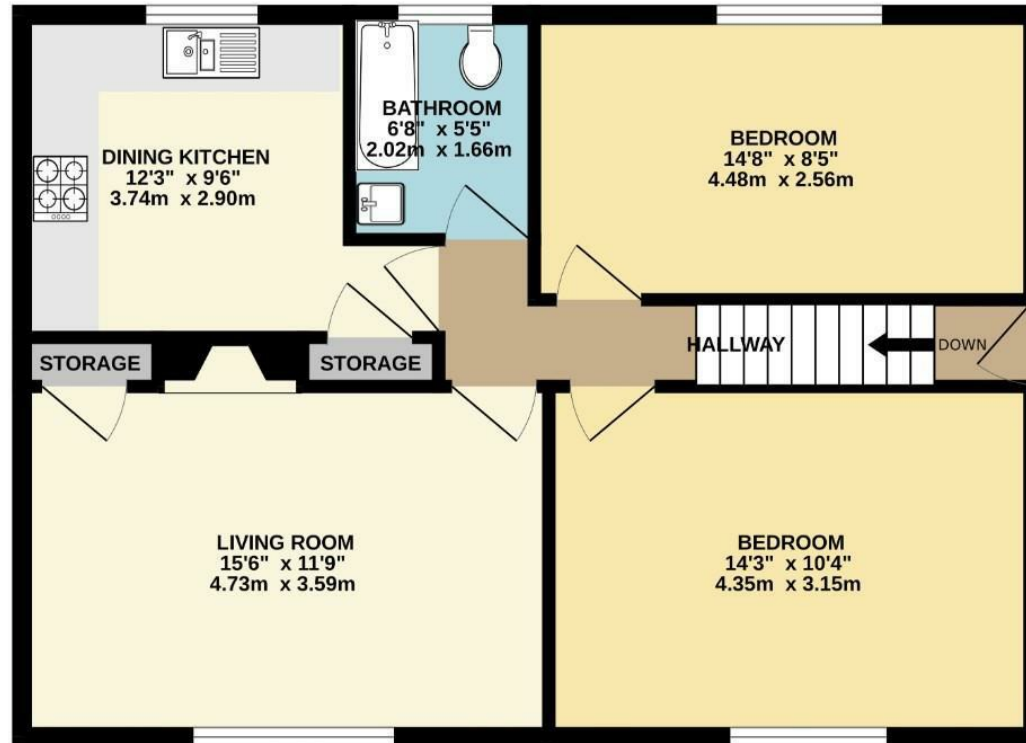
Floor Area - 628.00 sq ft

Local Authority - Manchester City Council

Council Tax - A



1ST FLOOR
628 sq.ft. (58.4 sq.m.) approx.



TOTAL FLOOR AREA: 628 sq.ft. (58.4 sq.m.) approx.
Measurements are approximate. Not to scale. Illustrative purposes only.
Made with Metropix ©2024



These particulars are believed to be accurate but they are not guaranteed and do not form a contract. Neither Jordan Fishwick nor the vendor or lessor accept any responsibility in respect of these particulars, which are not intended to be statements or representations of fact and any intending purchaser or lessee must satisfy himself by inspection or otherwise as to the correctness of each of the statements contained in these particulars. Any floorplans on this brochure are for illustrative purposes only and are not necessarily to scale.

Offices also at: Wilmslow, Macclesfield, Hale, Sale, Chorlton, Glossop, Manchester & Salford

757-759 Wilmslow Road, Didsbury Village, Manchester

0161 445 4480

didsbury@jordanfishwick.co.uk
www.jordanfishwick.co.uk