



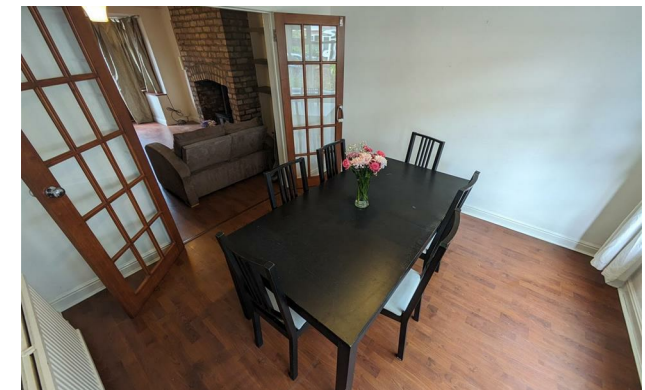
*jordan fishwick*

11 Tunstead Avenue, M20 1JY  
£1,500 Per Calendar Month



## Tunstead Avenue West Didsbury M20 1JY

£1,500 Per Calendar Month



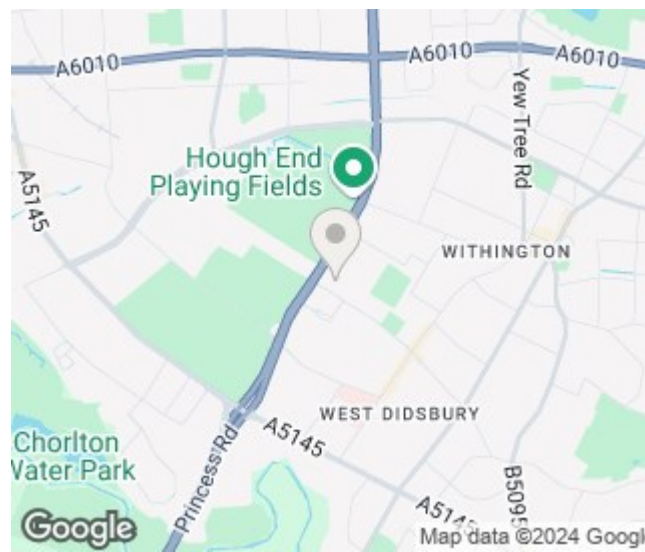
### The Property

View our Virtual Tour here - <https://www.youtube.com/watch?v=uUx-ygPXSX4>

**\*\*\* AVAILABLE NOW \*\*\*** A charming three-bedroom mid terrace property, conveniently positioned to West Didsbury Village with excellent transport links by way of Metrolink, local bus routes and motorway networks. Close to local amenities and all that West Didsbury has to offer. Offered on a part furnished basis this property briefly comprises; entrance hallway and two reception rooms plus kitchen with utility area housing the washing machine and boiler. To the first floor, there are two double bedrooms, single third bedroom plus a contemporary bathroom suite. Front garden with lawn and path. Sizeable rear garden with a shed for storage, plus decking and a large lawned area. Please call Didsbury to arrange a viewing on 0161 434 5290.

EPC Rating D

- Available Now
- Three Bedrooms
- Two Reception Rooms
- Part Furnished
- Perfect for Families or Couples
- Great Location of West Didsbury
- Large Rear Garden with Decking Area
- On Street Parking
- Council Tax Band B
- EPC Rating D



Energy Efficiency Rating		
	Current	Potential
Very energy efficient - lower running costs		
(92 plus) <b>A</b>		
(81-91) <b>B</b>		
(69-80) <b>C</b>		<b>76</b>
(55-68) <b>D</b>	<b>59</b>	
(39-54) <b>E</b>		
(21-38) <b>F</b>		
(1-20) <b>G</b>		
Not energy efficient - higher running costs		
<b>England &amp; Wales</b>	EU Directive 2002/91/EC	





These particulars are believed to be accurate but they are not guaranteed and do not form a contract. Neither Jordan Fishwick nor the vendor or lessor accept any responsibility in respect of these particulars, which are not intended to be statements or representations of fact and any intending purchaser or lessee must satisfy himself by inspection or otherwise as to the correctness of each of the statements contained in these particulars. Any floorplans on this brochure are for illustrative purposes only and are not necessarily to scale.

Offices at: Offices at Chorlton, Didsbury, Disley, Hale, Glossop, Macclesfield, Manchester Deansgate, Manchester Whitworth Street, New Mills, Sale, Wilmslow and Withington