



jordan fishwick

DIDSBURY
Firecrest Drive



Firecrest Drive, Didsbury, M20 2FD

Guide Price £1,450,000



The Property

A STUNNING DETACHED FAMILY HOME with BEAUTIFULLY STYLED living space arranged over THREE FLOORS, including FIVE DOUBLE BEDROOMS, FOUR LUXURY BATHROOMS and an impressive open plan living/kitchen over 31ft. Nicely tucked away within a select gated development in the heart of Didsbury Village, St James Park is an exclusive collection of bespoke family homes and converted Grade II listed buildings, surrounded by landscaped gardens & grounds. Numerous noteworthy features also include a generous living room over 26ft, downstairs wc, Quartz granite work surfaces to the kitchen and a comprehensive range of integrated appliances including a wine cooler and warming drawer, useful utility room and a master bedroom with dressing room & balcony. Externally, the property enjoys a secluded position, with an extended block paved driveway and integral garage with electric up and over door. To the rear is a generous landscaped westerly facing garden with paved patio areas.

Directions

M20 2FD



- Stunning detached family home
- Five double bedrooms
- Four luxury bathrooms
- Open plan family kitchen over 31ft
- Living room over 26ft
- Downstairs WC & utility room
- Dressing room & balcony to master bedroom
- Integral garage with electric door
- Landscaped Westerly facing gardens
- Exclusive development in Didsbury Village

Postcode - M20 2FD

EPC Rating - B

Floor Area - 2911.00 sq ft

Local Authority - Manchester City Council

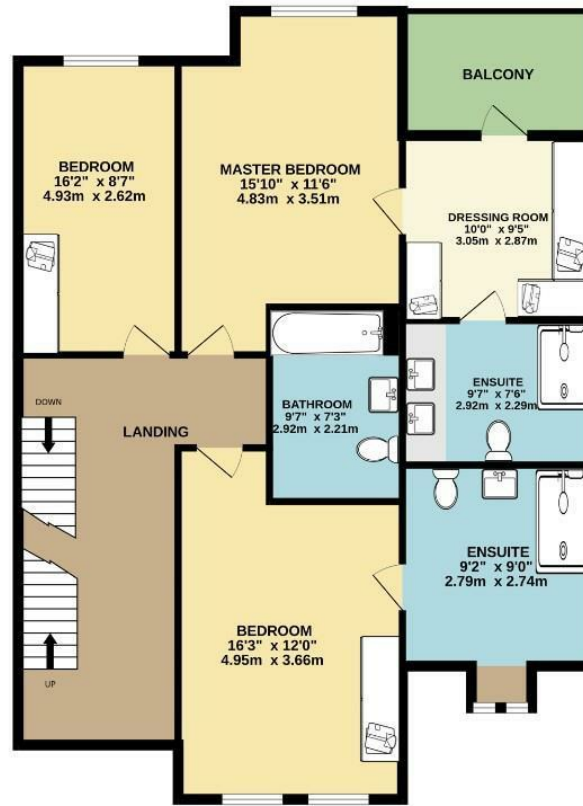
Council Tax - G



GROUND FLOOR
1204 sq.ft. (111.8 sq.m.) approx.



1ST FLOOR
1142 sq.ft. (106.1 sq.m.) approx.



2ND FLOOR
565 sq.ft. (52.5 sq.m.) approx.



TOTAL FLOOR AREA : 2911 sq.ft. (270.4 sq.m.) approx.
Measurements are approximate. Not to scale. Illustrative purposes only
Made with Metropix ©2024



These particulars are believed to be accurate but they are not guaranteed and do not form a contract. Neither Jordan Fishwick nor the vendor or lessor accept any responsibility in respect of these particulars, which are not intended to be statements or representations of fact and any intending purchaser or lessee must satisfy himself by inspection or otherwise as to the correctness of each of the statements contained in these particulars. Any floorplans on this brochure are for illustrative purposes only and are not necessarily to scale.

Offices also at: Wilmslow, Macclesfield, Hale, Sale, Chorlton, Glossop, Manchester & Salford

757-759 Wilmslow Road, Didsbury Village, Manchester

0161 445 4480

didsbury@jordanfishwick.co.uk
www.jordanfishwick.co.uk