



jordan fishwick

HEATON MERSEY
Harwood Court



Harwood Court, Heaton Mersey, SK4 3BE

£95,000

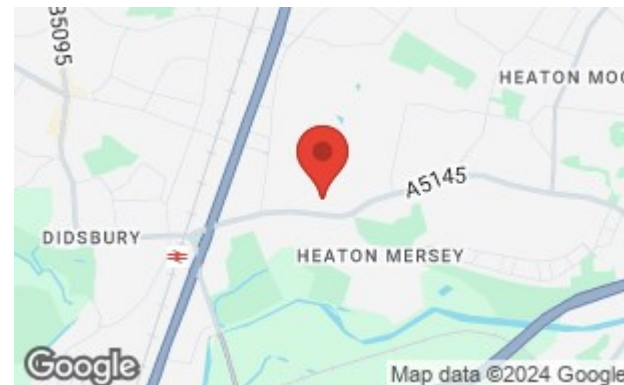


The Property

A first floor studio apartment in a purpose built development which is ideally situated with easy access to the Heaton Mersey village, East Didsbury Metro Station and Parrs Wood complex. Comprising private hallway, bright and spacious living/bedroom with ample storage, fitted kitchen with open views and white bathroom with shower above. Features include electric heating and double glazing. Outside, well maintained communal gardens and secure gated residents parking. No chain.

Directions

SK4 3BE



- A first floor studio apartment
- Double glazing & electric heating
- Gated private residents parking
- No chain
- Close to Metro Station & amenities
- Ideal first time purchase

Postcode - SK4 3BE

EPC Rating - D

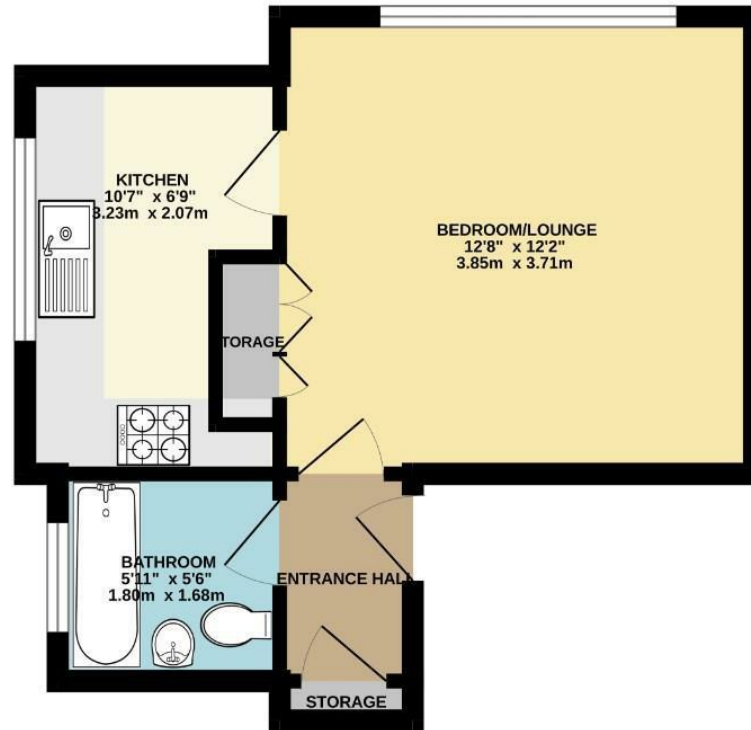
Floor Area - 281.00 sq ft

Local Authority - Stockport Council

Council Tax - A



GROUND FLOOR
281 sq.ft. (26.1 sq.m.) approx.



TOTAL FLOOR AREA: 281 sq.ft. (26.1 sq.m.) approx.
Measurements are approximate. Not to scale. Illustrative purposes only.
Made with Metropax ©2024



These particulars are believed to be accurate but they are not guaranteed and do not form a contract. Neither Jordan Fishwick nor the vendor or lessor accept any responsibility in respect of these particulars, which are not intended to be statements or representations of fact and any intending purchaser or lessee must satisfy himself by inspection or otherwise as to the correctness of each of the statements contained in these particulars. Any floorplans on this brochure are for illustrative purposes only and are not necessarily to scale.

Offices also at: Wilmslow, Macclesfield, Hale, Sale, Chorlton, Glossop, Manchester & Salford

757-759 Wilmslow Road, Didsbury Village, Manchester

0161 445 4480

didsbury@jordanfishwick.co.uk
www.jordanfishwick.co.uk