



jordan fishwick

FALLOWFIELD
Beech Grove



Beech Grove, Fallowfield, M14 6UY

£350,000



The Property

INVESTMENT OPPORTUNITY, CURRENTLY LET TIL JUNE 2025 at £1900pcm excluding bills. An extended and spacious three bedroom semi detached property currently let to four individuals, located close to the centre of Fallowfield village and with excellent transport links, the property is well placed for local amenities and universities. Comprises: Entrance hall, double bedrooms, lounge/dining room, kitchen and utility/wc. To the first floor: three further double bedrooms and bathroom. To the rear of the property there is a lawned garden. Gas central heating and double glazing complete the impressive specification.

Directions

M14 6UY



- Investment opportunity
- Currently let till June 2025
- 11 Month tenancy @ £1900pcm
- Prime student letting area
- Four double bedroom
- Downstairs WC/Utility room
- Large through lounge/dining area

Postcode - M14 6UY

EPC Rating - D

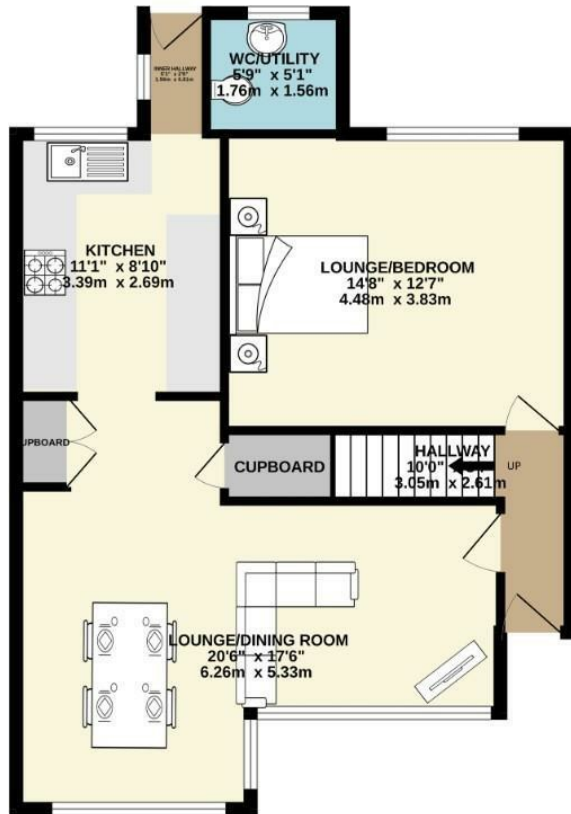
Floor Area - 1131.00 sq ft

Local Authority - Manchester City Council

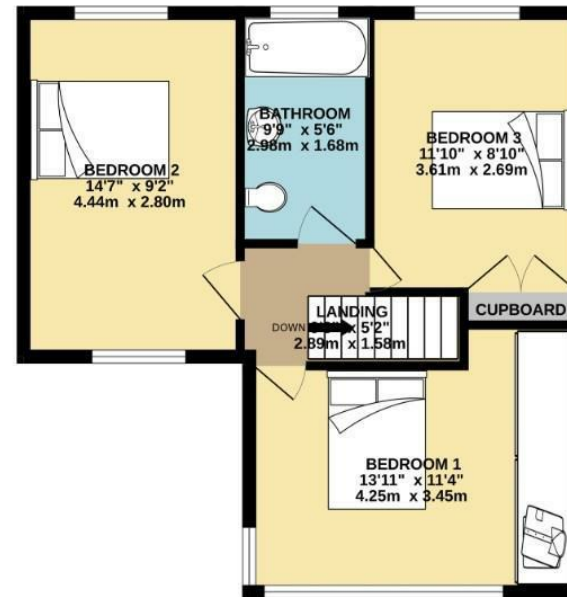
Council Tax - B



GROUND FLOOR



1ST FLOOR



Measurements are approximate. Not to scale. Illustrative purposes only
 Made with Metropix ©2024



These particulars are believed to be accurate but they are not guaranteed and do not form a contract. Neither Jordan Fishwick nor the vendor or lessor accept any responsibility in respect of these particulars, which are not intended to be statements or representations of fact and any intending purchaser or lessee must satisfy himself by inspection or otherwise as to the correctness of each of the statements contained in these particulars. Any floorplans on this brochure are for illustrative purposes only and are not necessarily to scale.

Offices also at: Wilmslow, Macclesfield, Hale, Sale, Chorlton, Glossop, Manchester & Salford

757-759 Wilmslow Road, Didsbury Village, Manchester

0161 445 4480

didsbury@jordanfishwick.co.uk
 www.jordanfishwick.co.uk