



medserena  
Ulughat Mill Centre

*jordan fishwick*

**WEST DIDSBURY**  
Albert House





## Albert House, West Didsbury, M20 2EN

Guide Price £210,000



### The Property

A superbly presented and larger than average (669 sq ft) apartment within a highly sought after development, constructed in 2014 and enjoying an enviable corner position with windows to two aspects. Located on the first floor light & airy apartment is ideal for the young professionals seeking something spacious, modern and within easy reach of West Didsbury. On the ground floor of Albert House itself is the RX Gym and The Boulevard Deli, while a short walk away is fashionable Burton Road with its bars, restaurants, shops and The Metrolink. The property is presented to a high standard throughout with floor to ceiling windows, a Juliette balcony off the lounge with French style double doors, a spacious bedroom with ample space for freestanding furniture and a modern, open plan kitchen with a range of white finished units. There is lift access to all floors and to the rear is gated residents parking. **\*\*No Onward Chain\*\***

### Directions

M20 2EN





- Superb first floor apartment
- Larger than average living space 669 sq ft
- Dual aspect with full height windows
- Living room with Juliette balcony
- Spacious double bedroom
- Modern kitchen & bathroom
- Lift access to all floors
- Gated residents parking
- Great West Didsbury location
- No Onward Chain

**Postcode** - M20 2EN

**EPC Rating** - C

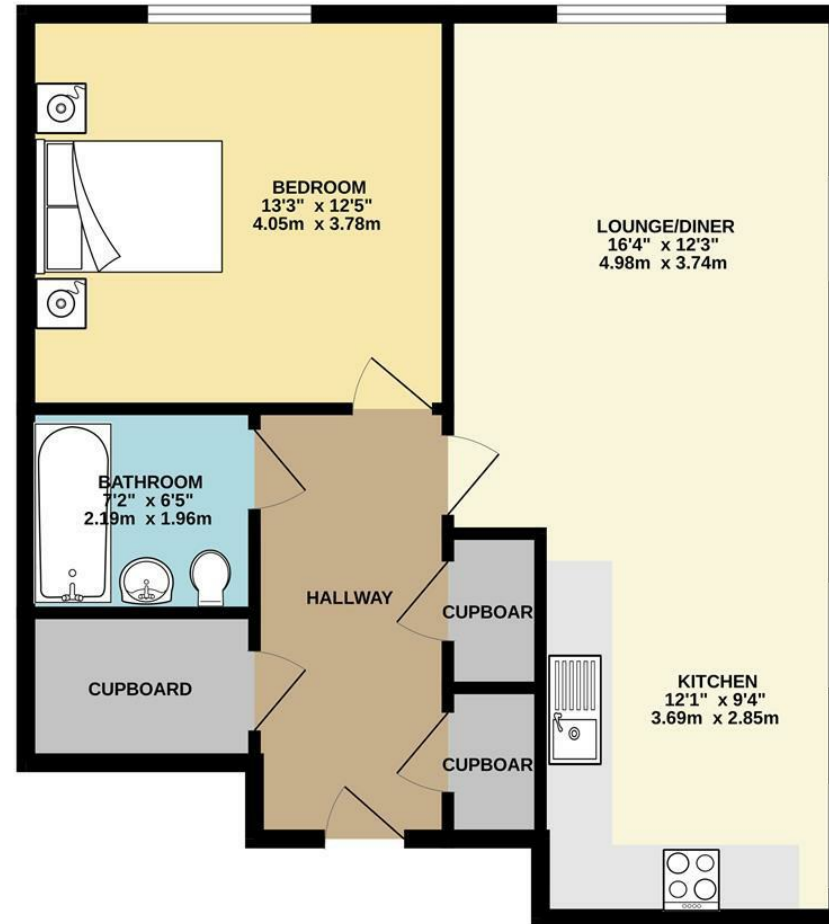
**Floor Area** - 669.00 sq ft

**Local Authority** - Manchester City Council

**Council Tax** - C



FIRST FLOOR  
669 sq.ft. (62.1 sq.m.) approx.



TOTAL FLOOR AREA - 669 sq.ft. (62.1 sq.m.) approx.  
Measurements are approximate. Not to scale. Illustrative purposes only  
Made with Metroplan ©2023



These particulars are believed to be accurate but they are not guaranteed and do not form a contract. Neither Jordan Fishwick nor the vendor or lessor accept any responsibility in respect of these particulars, which are not intended to be statements or representations of fact and any intending purchaser or lessee must satisfy himself by inspection or otherwise as to the correctness of each of the statements contained in these particulars. Any floorplans on this brochure are for illustrative purposes only and are not necessarily to scale.

Offices also at: Wilmslow, Macclesfield, Hale, Sale, Chorlton, Glossop, Manchester & Salford

757-759 Wilmslow Road, Didsbury Village, Manchester

0161 445 4480

didsbury@jordanfishwick.co.uk  
www.jordanfishwick.co.uk