

**This property is fully booked
for viewings**

jordan fishwick

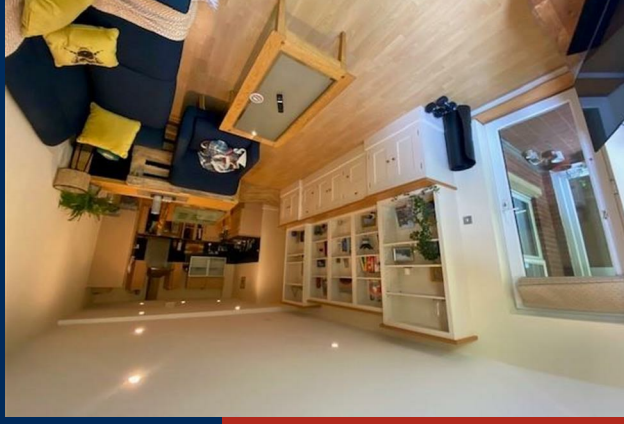
Spath Road, Didsbury, Manchester, M20 2FA

£1,495 Per Calendar Month



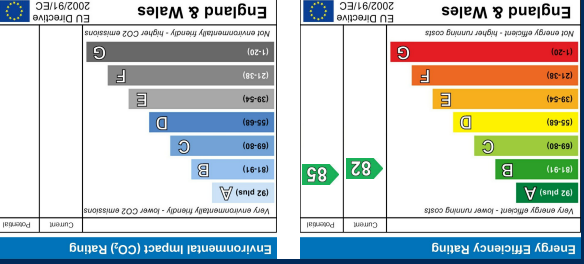


EPC Rating - B

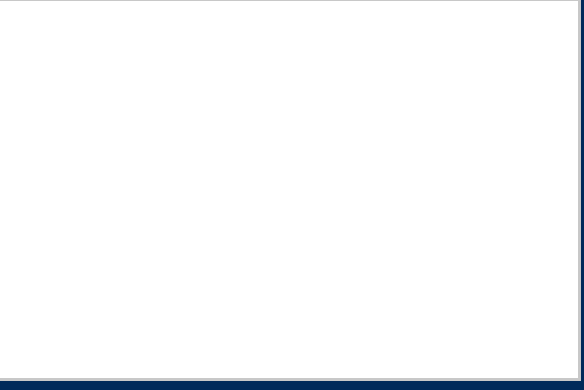


View our Virtual Tour Here - <https://youtu.be/QF4rtqtaKFE>

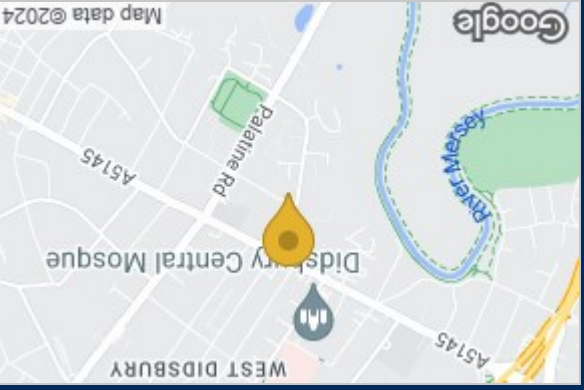
*** VIEWINGS NOW FULL - PLEASE CALL TO REGISTER YOUR INTEREST *** AVAILABLE AUGUST *** A most impressive and superbly presented first floor apartment forming part of an exclusive purpose built development on a sought after tree lined road with easy access to both Didsbury and West Didsbury Villages. Ideally suited to a couple with numerous noteworthy features include hand-made bespoke furniture to both double bedrooms and living room. Fitted kitchen with integrated appliances, covered balcony accessed from both the living room and main bedroom, en-suite shower room and bathroom with modern suites, uPVC double glazing throughout, south facing aspect, lift access to all floors and secure underground parking. Offered on a furnished basis. To View Apply Didsbury 0161 434 5290



Energy Efficiency Graph



Floor Plan



Area Map

These particulars, whilst believed to be accurate are set out as a general outline only for guidance and do not constitute any part of an offer or contract. Intending purchasers should not rely on them as statements of representation of fact, but must satisfy themselves by inspection or otherwise as to their accuracy. No person in this firm's employment has the authority to make or give any representation or warranty in respect of the property.