



*Jordan fishwick*

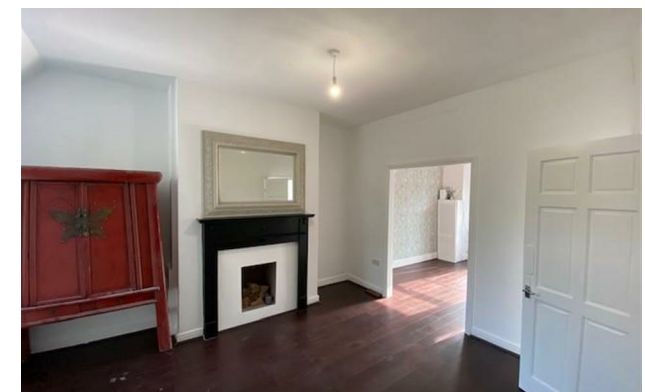
1 Griffin Grove, Levenshulme, M19 2QQ  
£1,395 Per Calendar Month





## Griffin Grove Manchester M19 2QQ

£1,395 Per Calendar Month



### The Property

View our Virtual Tour Here - <https://youtu.be/0o0yVwBrG5k>

**\*\*\* AVAILABLE NOW \*\*\*** Jordan Fishwick are delighted to bring to the rental market this fully refurbished, two double bedroom end terrace. Great location to Burnage and Levenshulme, transport links, local shops and entertainment, makes it ideal for a couple, single occupant or professional sharers only. The property briefly comprises of two full size reception rooms with wooden flooring and high spec modern kitchen with white goods along with rear access to the back yard. The first floor is made up of two spacious bedrooms with fitted wardrobes and a newly fitted modern three piece bathroom. New decor and carpets throughout. Unfurnished. Call now to arrange a viewing on 0161 434 5290

EPC Rating - D

- Available Now
- Two Double Bedrooms
- Unfurnished
- Newly Refurbished Throughout
- Great Location
- Ideal for Couple or Professional Sharers Only
- On Street Parking
- Yard
- Council Tax Band A
- EPC Rating D



Energy Efficiency Rating		
	Current	Potential
Very energy efficient - lower running costs		
(92 plus) <b>A</b>		
(81-91) <b>B</b>		<b>86</b>
(69-80) <b>C</b>		
(55-68) <b>D</b>	<b>63</b>	
(39-54) <b>E</b>		
(21-38) <b>F</b>		
(1-20) <b>G</b>		
Not energy efficient - higher running costs		
<b>England &amp; Wales</b>	EU Directive 2002/91/EC	





These particulars are believed to be accurate but they are not guaranteed and do not form a contract. Neither Jordan Fishwick nor the vendor or lessor accept any responsibility in respect of these particulars, which are not intended to be statements or representations of fact and any intending purchaser or lessee must satisfy himself by inspection or otherwise as to the correctness of each of the statements contained in these particulars. Any floorplans on this brochure are for illustrative purposes only and are not necessarily to scale.

Offices at: Offices at Chorlton, Didsbury, Disley, Hale, Glossop, Macclesfield, Manchester Deansgate, Manchester Whitworth Street, New Mills, Sale, Wilmslow and Withington