



*jordan fishwick*

**DIDSBURY**  
Didsbury Park





## Didsbury Park, Didsbury, M20 5LJ

Guide Price £575,000



### The Property

An attractive semi detached family home with a GENEROUS PLOT and gardens to three sides, detached GARAGE, parking for several vehicles and a GREAT LOCATION on DIDSBURY PARK, within easy reach of Didsbury Village. The majority of the windows are uPVC double glazed and the property is warmed by gas central heating, with the living space in outline comprising :- Side Entrance hall, lounge with bay window, separate dining room with open plan entrance to the fitted kitchen, useful utility room and shower room on the ground floor, with the first floor landing giving way to the three bedrooms and bathroom.

### Directions

M20 5LJ





- Attractive semi detached
- Extended to the ground floor
- Large plot with gardens to three sides
- Parking for several cars & detached garage
- Three bedrooms
- Two separate reception rooms
- Useful utility & downstairs shower room
- Gas central heating
- Majority uPVC double glazing
- Close by Didsbury Village and local parks

Postcode - M20 5LJ

EPC Rating - D

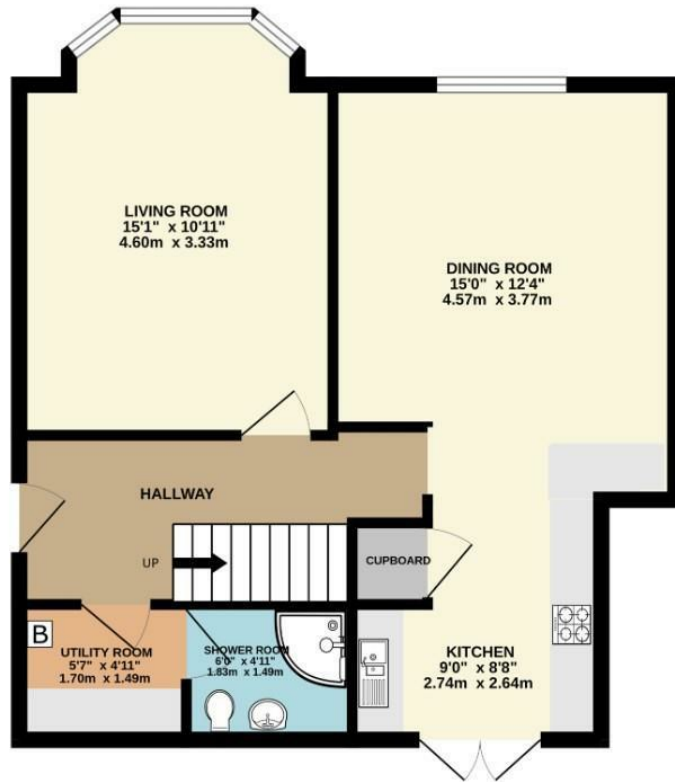
Floor Area - 1006.00 sq ft

Local Authority - Manchester City Council

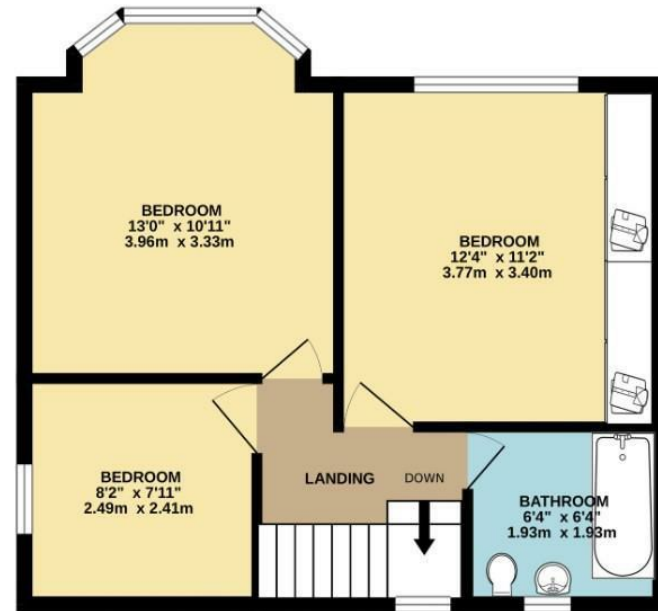
Council Tax - E



GROUND FLOOR  
556 sq.ft. (51.7 sq.m.) approx.



FIRST FLOOR  
450 sq.ft. (41.8 sq.m.) approx.



TOTAL FLOOR AREA : 1006 sq.ft. (93.4 sq.m.) approx.  
Measurements are approximate. Not to scale. Illustrative purposes only  
Made with Metropix ©2024



These particulars are believed to be accurate but they are not guaranteed and do not form a contract. Neither Jordan Fishwick nor the vendor or lessor accept any responsibility in respect of these particulars, which are not intended to be statements or representations of fact and any intending purchaser or lessee must satisfy himself by inspection or otherwise as to the correctness of each of the statements contained in these particulars. Any floorplans on this brochure are for illustrative purposes only and are not necessarily to scale.

Offices also at: Wilmslow, Macclesfield, Hale, Sale, Chorlton, Glossop, Manchester & Salford

757-759 Wilmslow Road, Didsbury Village, Manchester

0161 445 4480

didsbury@jordanfishwick.co.uk  
www.jordanfishwick.co.uk