

*jordan fishwick*

757-759 Wilmslow Road  
Didsbury Village  
Manchester  
M20 6RN  
didsbury@jordanfishwick.co.uk  
0161 434 5290



School Lane, Didsbury, Manchester, M20 6LB

£1,275 Per Calendar Month



[www.jordanfishwick.co.uk](http://www.jordanfishwick.co.uk)

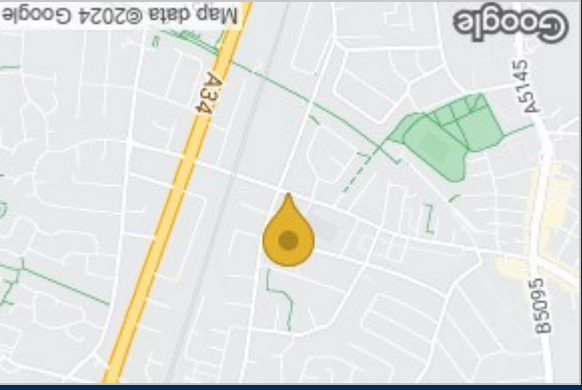


EPC Rating C

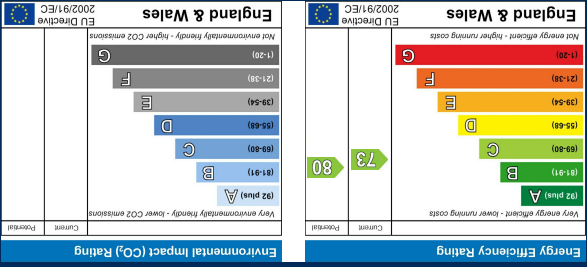
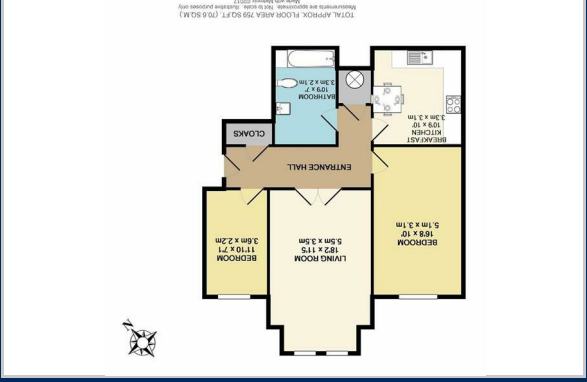
0161 434 5290

\*\*\* VIEWINGS NOW FULLY BOOKED - PLEASE REGISTER YOUR INTEREST \*\*\* AVAILABLE JULY \*\*\* Jordan Fishwick are delighted to bring to the rental market this spacious two double bedroom ground floor apartment. Located on School Lane in Didsbury this property is ideally suited to a couple, small family or max 2 shares. It is in a great location, close to local shops, Didsbury Village and the Metrolink as well as motorway links. In brief the property comprises; entrance hall with two storage cupboards, large lounge area, fully fitted kitchen with appliances, two double bedrooms and a three piece family bathroom suite. The property benefits from double glazing, electric heating, and allocated off road parking for one car. Offered on a furnished basis. Call now to view -

Available with  
**Deposit**  
 No deposit needed



Area Map



Energy Efficiency Graph

These particulars, whilst believed to be accurate are set out as a general outline only for guidance and do not constitute any part of an offer or contract. Intending purchasers should not rely on them as statements of representation of fact, but must satisfy themselves by inspection or otherwise as to their accuracy. No person in this firm's employment has the authority to make or give any representation or warranty in respect of the property.