

*jordan fishwick*

757-759 Wilmslow Road  
Didsbury Village  
Manchester  
M20 6RN  
didsbury@jordanfishwick.co.uk  
0161 434 5290



**Barlow Moor Road, Didsbury, Manchester, M20 2PU**

**£995 Per Calendar Month**



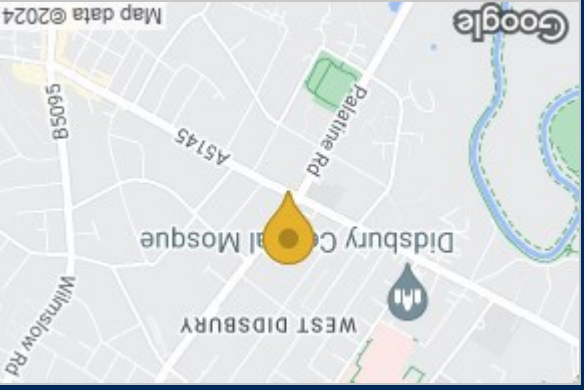
[www.jordanfishwick.co.uk](http://www.jordanfishwick.co.uk)



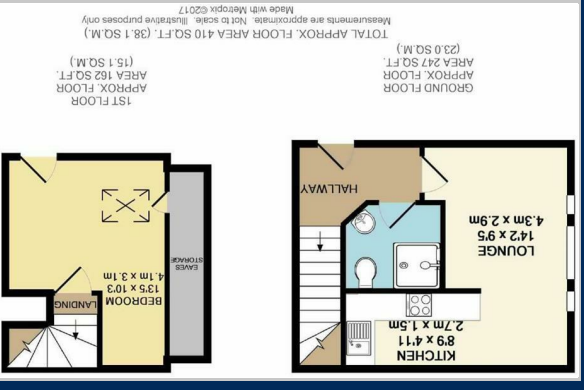
EPC Rating - D



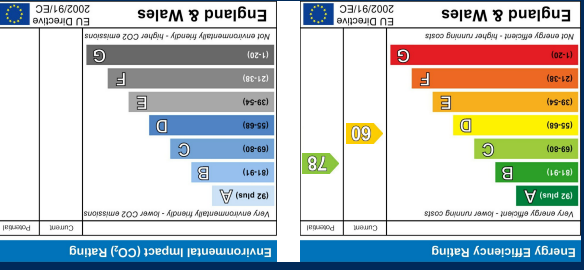
\*\*\* VIEWINGS NOW FULLY BOOKED - PLEASE REGISTER YOUR INTEREST \*\*\* AVAILABLE JULY \*\*\* A stylish duplex apartment over the first and second floors of this beautiful period property. Situated between West Didsbury's Burton Road and Didsbury Village (walkable to both), it is in an ideal spot to make the most of all Didsbury has to offer. The building is well maintained with a gated residents car park to the rear. Inside, this lovely property enjoys high ceilings and well laid out accommodation comprising: hallway, lounge with picture window to the front, opening to the kitchen. A modern shower room and a bedroom upstairs. It really is a charming flat and would be an ideal for a single occupant. To arrange a viewing please call Didsbury on 0161 4345290.



Area Map



Floor Plan



Energy Efficiency Graph

These particulars, whilst believed to be accurate are set out as a general outline only for guidance and do not constitute any part of an offer or contract. Intending purchasers should not rely on them as statements of representation of fact, but must satisfy themselves by inspection or otherwise as to their accuracy. No person in this firm's employment has the authority to make or give any representation or warranty in respect of the property.