

Fishwick nor the vendor or lessor accept any responsibility in respect of these particulars, which are not intended to be statements or representations of fact and any intending purchaser or lessee must satisfy himself by inspection or otherwise as to the correctness of each of the statements contained in these particulars. Any floorplans on this brochure are for illustrative purposes only and are not necessarily to scale.

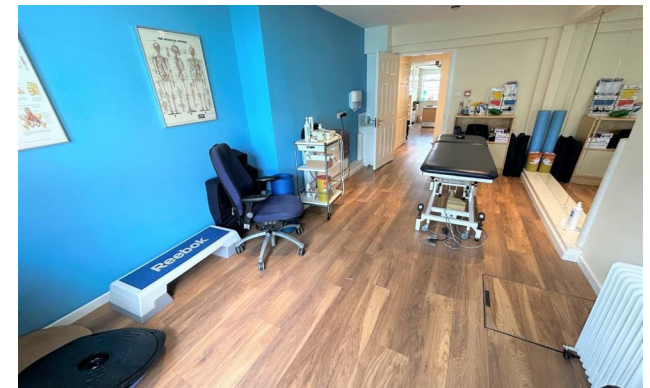
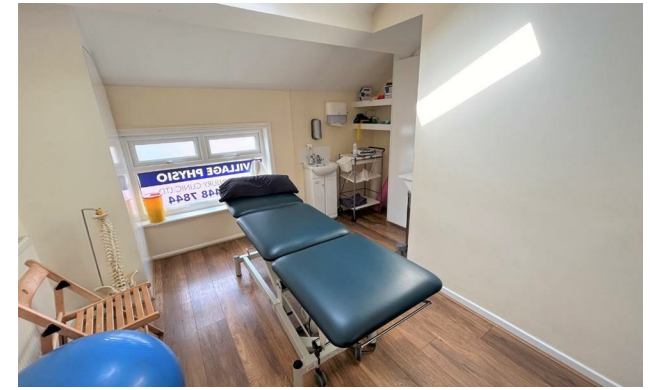
TOTAL FLOOR AREA : 709 sq. ft. (65.8 sq.m.) approx.  
Measurements are approximate. Not to scale. Intention for guidance only.  
M319





Warburton Street, Didsbury  
Village M20 6WA

£375,000

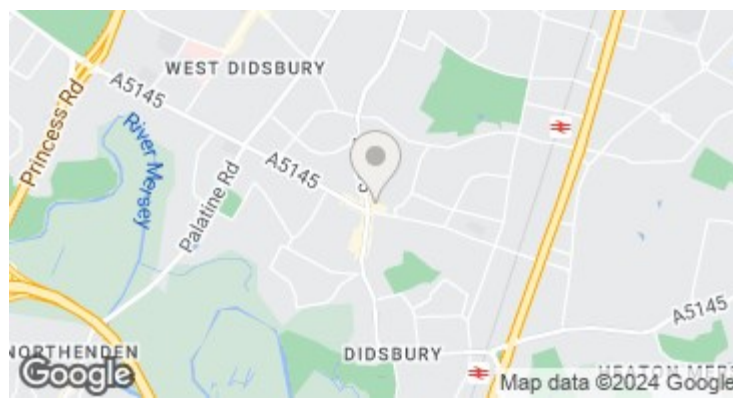


### The Property

A rare opportunity to purchase a delightful, garden fronted cottage on the oldest street in Didsbury! Dating back to the 1830's, Warburton Street is a charming cobbled street with original stone pavements in the heart of Didsbury Village. This superb property is currently undergoing a programme of renovation, the results of which will provide a lovely home ready to move into, with two bedrooms, modern shower room, extended living kitchen opening to the rear garden and a separate lounge. Warmed by gas central heating and further complemented by uPVC double glazed windows. Please call now on 0161 445 4480 to register your interest.

### Directions

M20 6WA



- The oldest street in Didsbury!
- Dating back to the 1830's
- Delightful garden fronted cottage
- Currently under renovation
- Two bedrooms
- Open plan living/kitchen
- Separate lounge
- Modern shower room
- Gas central heating & uPVC dbl glazing
- Register your interest now on 0161 445 4480

Postcode - M20 6WA

EPC Rating -

Floor Area - 709.00 sq ft

Local Authority - Manchester City Council

Council Tax -

