



Jordan Fishwick

DIDSBURY
Bempton Drive



Bempton Drive, Didsbury, M20 2WD

Fixed Asking Price £695,000



The Property

A magnificent, FIVE BEDROOM, semi detached home forming part of an EXCLUSIVE DEVELOPMENT by PJ Livesey and being BEAUTIFULLY PRESENTED throughout, situated opposite Didsbury Cricket Club and within a short stroll of Didsbury Village. Numerous noteworthy features include a bright and spacious living / dining room with large bi-folding doors opening to the landscaped rear garden, bespoke breakfast kitchen finished with a complete range of upgraded integrated appliances, luxury family bathroom & en-suite shower room, separate downstairs WC, top floor walk-out south facing balcony, electric blinds and upgraded bathroom fittings. In addition, there is parking for two vehicles to the front and an enclosed landscaped garden to the rear, with a generous flagged patio area and boundary fencing.

Directions

M20 2WD



- Magnificent semi-detached home
- Beautifully presented throughout
- Five bedrooms
- Luxury bathroom & en-suite
- Bespoke breakfast kitchen
- Upgraded integrated appliances
- Living room with bi-fold doors
- Two parking spaces
- Landscaped gardens
- Great location in Didsbury

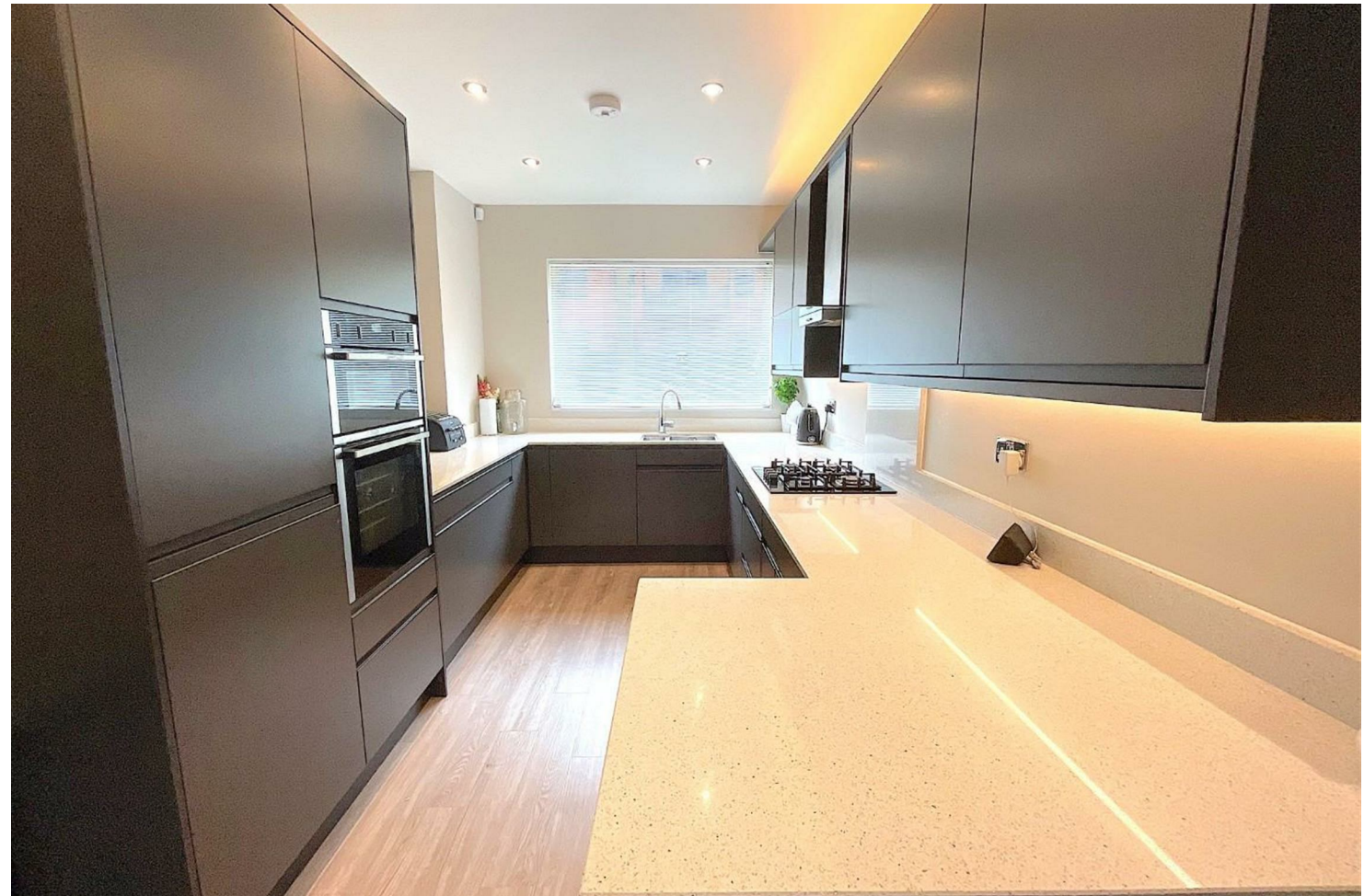
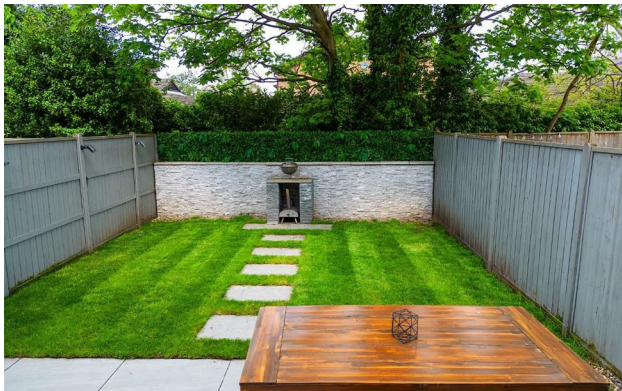
Postcode - M20 2WD

EPC Rating - B

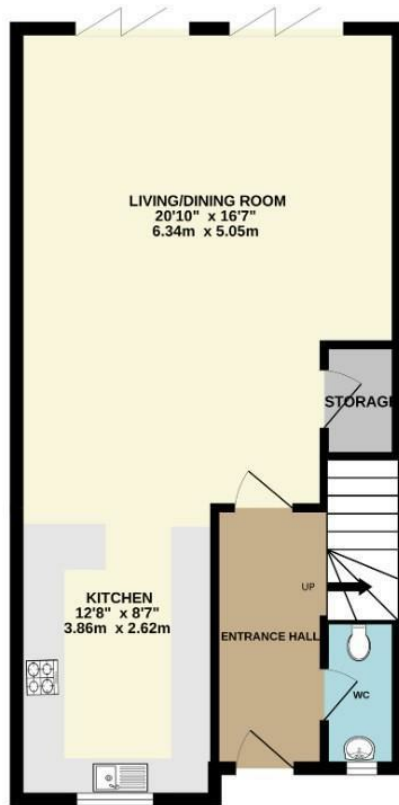
Floor Area - 1430.00 sq ft

Local Authority - Manchester City Council

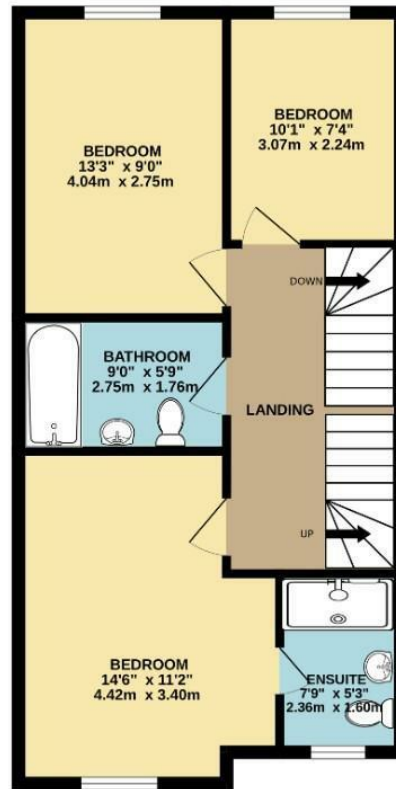
Council Tax - F



GROUND FLOOR
543 sq.ft. (50.5 sq.m.) approx.



1ST FLOOR
544 sq.ft. (50.5 sq.m.) approx.



2ND FLOOR
342 sq.ft. (31.8 sq.m.) approx.



TOTAL FLOOR AREA : 1430 sq.ft. (132.8 sq.m.) approx.
Measurements are approximate. Not to scale. Illustrative purposes only
Made with Metropix ©2024



These particulars are believed to be accurate but they are not guaranteed and do not form a contract. Neither Jordan Fishwick nor the vendor or lessor accept any responsibility in respect of these particulars, which are not intended to be statements or representations of fact and any intending purchaser or lessee must satisfy himself by inspection or otherwise as to the correctness of each of the statements contained in these particulars. Any floorplans on this brochure are for illustrative purposes only and are not necessarily to scale.

Offices also at: Wilmslow, Macclesfield, Hale, Sale, Chorlton, Glossop, Manchester & Salford

757-759 Wilmslow Road, Didsbury Village, Manchester

0161 445 4480

didsbury@jordanfishwick.co.uk
www.jordanfishwick.co.uk