



*jordan fishwick*

MANCHESTER  
Mersey Road





**Mersey Road,  
Manchester, M20 2QA**

**Offers Over £200,000**



### The Property

A most IMPRESSIVE and LARGER THAN AVERAGE double bedroomed apartment, occupying a second floor position within a desirable and secluded development in fashionable WEST DIDSBURY. 532 sq ft. This apartment also comes with its own private garage fit for both parking/storage. The living space is presented to a high standard with both gas central heating and uPVC double glazing, with lift access to all floors. In outline:- A generous entrance hall with cloaks cupboard, extremely spacious lounge/dining room with 'box' bay window with French doors leading to 'Juliette' balcony, fitted kitchen, double bedroom with fitted wardrobes providing ample storage and a bathroom with contemporary white suite. The development lies within mature and well tended gardens and grounds with residents parking.

### Directions

M20 2QA





- Larger than average apartment
- Secluded development
- Garage
- Situated on second floor
- West Didsbury location
- Lift access to all floors
- Gas central heating
- uPVC double glazing
- Mature gardens & grounds

Postcode - M20 2QA

EPC Rating - C

Floor Area - 532.00 sq ft

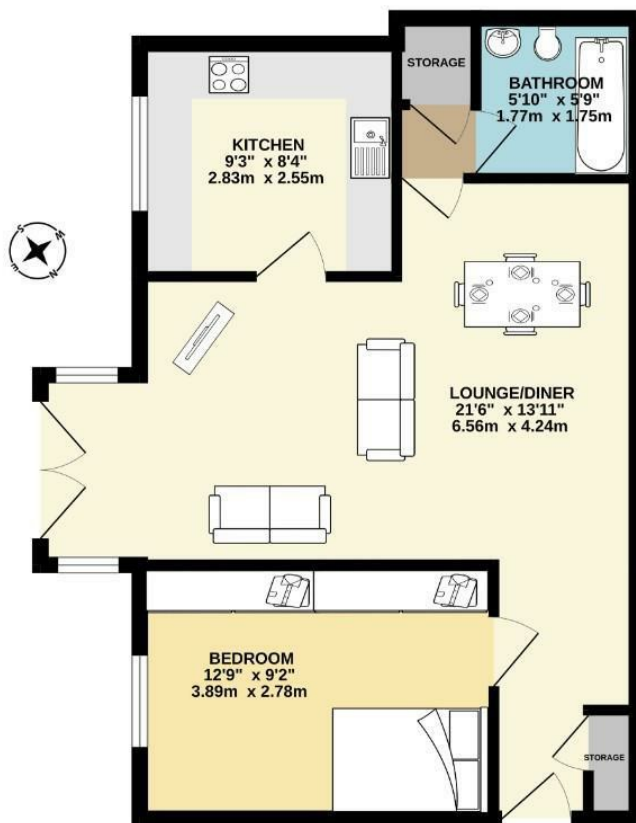
Local Authority - Manchester City Council

Council Tax - B





SECOND FLOOR  
532 sq.ft. (49.5 sq.m.) approx.



TOTAL FLOOR AREA: 532 sq.ft. (49.5 sq.m.) approx.  
Measurements are approximate. Not to scale. Illustrative purposes only.  
Made with Metropix ©2024



These particulars are believed to be accurate but they are not guaranteed and do not form a contract. Neither Jordan Fishwick nor the vendor or lessor accept any responsibility in respect of these particulars, which are not intended to be statements or representations of fact and any intending purchaser or lessee must satisfy himself by inspection or otherwise as to the correctness of each of the statements contained in these particulars. Any floorplans on this brochure are for illustrative purposes only and are not necessarily to scale.

Offices also at: Wilmslow, Macclesfield, Hale, Sale, Chorlton, Glossop, Manchester & Salford

757-759 Wilmslow Road, Didsbury Village, Manchester

0161 445 4480

didsbury@jordanfishwick.co.uk  
www.jordanfishwick.co.uk