



jordan fishwick

DIDSBURY
Parrs Wood Road



Parrs Wood Road, Didsbury, M20 5QG

Guide Price £635,000



The Property

A SIGNIFICANTLY EXTENDED, FOUR BEDROOM, SEMI DETACHED FAMILY HOME WITH STYLISH LIVING SPACE AND A GREAT LOCATION, FORMING PART OF A POPULAR RESIDENTIAL ROAD WITH EASY ACCESS TO DIDSBURY VILLAGE AND FLETCHER MOSS PARK. 1404 sq ft. Numerous noteworthy features include an impressive family kitchen/dining area with direct access to the rear garden, separate living room with attractive fireplace, entrance hall with spindle staircase to the first floor, four bedrooms and a contemporary bathroom with separate walk-in shower. In addition, there is a downstairs WC, integral garage and a useful entrance porch. Outside, a driveway provides parking to the front whilst to the rear is an attractive garden with flagged patio, lawned area, mature borders and wooden panel boundary fencing. *No onward chain*

Directions

M20 5QG



- Extended semi detached family home
- Presented to a high standard
- Four bedrooms
- Impressive open plan family kitchen
- Separate living room
- Contemporary bathroom & downstairs WC
- Integral garage & driveway to the front
- Attractive rear garden & patio
- No onward chain
- Great location close to Fletcher Moss Park

Postcode - M20 5QG

EPC Rating - D

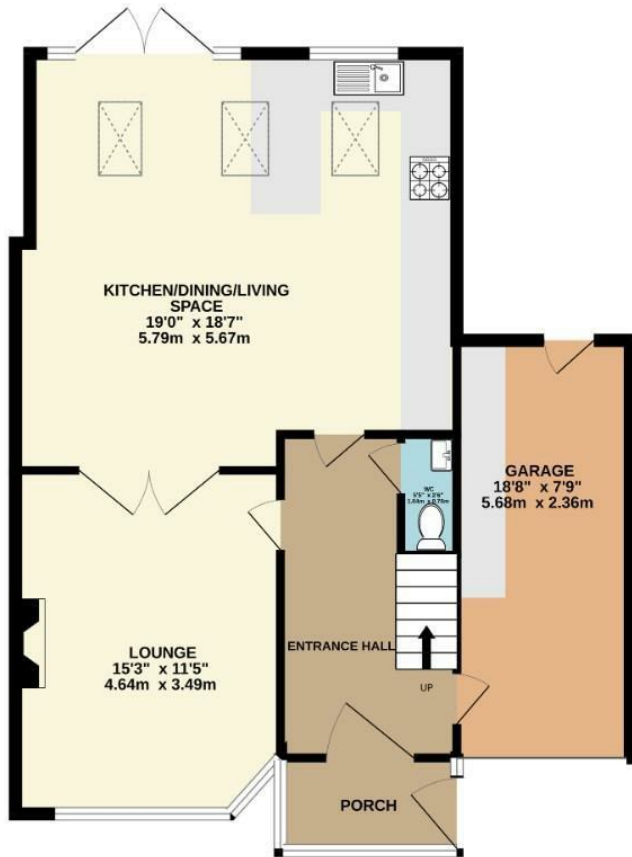
Floor Area - 1404.00 sq ft

Local Authority - Manchester City Council

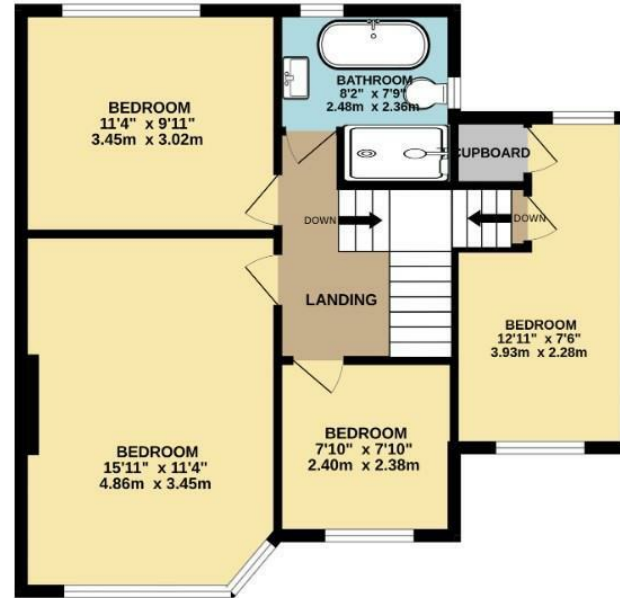
Council Tax - C



GROUND FLOOR
813 sq.ft. (75.6 sq.m.) approx.



1ST FLOOR
590 sq.ft. (54.8 sq.m.) approx.



TOTAL FLOOR AREA : 1404 sq.ft. (130.4 sq.m.) approx.
Measurements are approximate. Not to scale. Illustrative purposes only
Made with Metropix ©2024



These particulars are believed to be accurate but they are not guaranteed and do not form a contract. Neither Jordan Fishwick nor the vendor or lessor accept any responsibility in respect of these particulars, which are not intended to be statements or representations of fact and any intending purchaser or lessee must satisfy himself by inspection or otherwise as to the correctness of each of the statements contained in these particulars. Any floorplans on this brochure are for illustrative purposes only and are not necessarily to scale.

Offices also at: Wilmslow, Macclesfield, Hale, Sale, Chorlton, Glossop, Manchester & Salford

757-759 Wilmslow Road, Didsbury Village, Manchester

0161 445 4480

didsbury@jordanfishwick.co.uk
www.jordanfishwick.co.uk